

ALASKA

DISCOVER WILD ALASKA

KAYAK, HIKE, SEE
THE UNDERSEA & SHOOT
YOUR BEST PHOTOS

PLUS

AN EXCLUSIVE
VISIT TO ANCESTRAL
HAIDA GWAI

WITH

FREE AIR ON SELECT
MAY & JUNE DEPARTURES

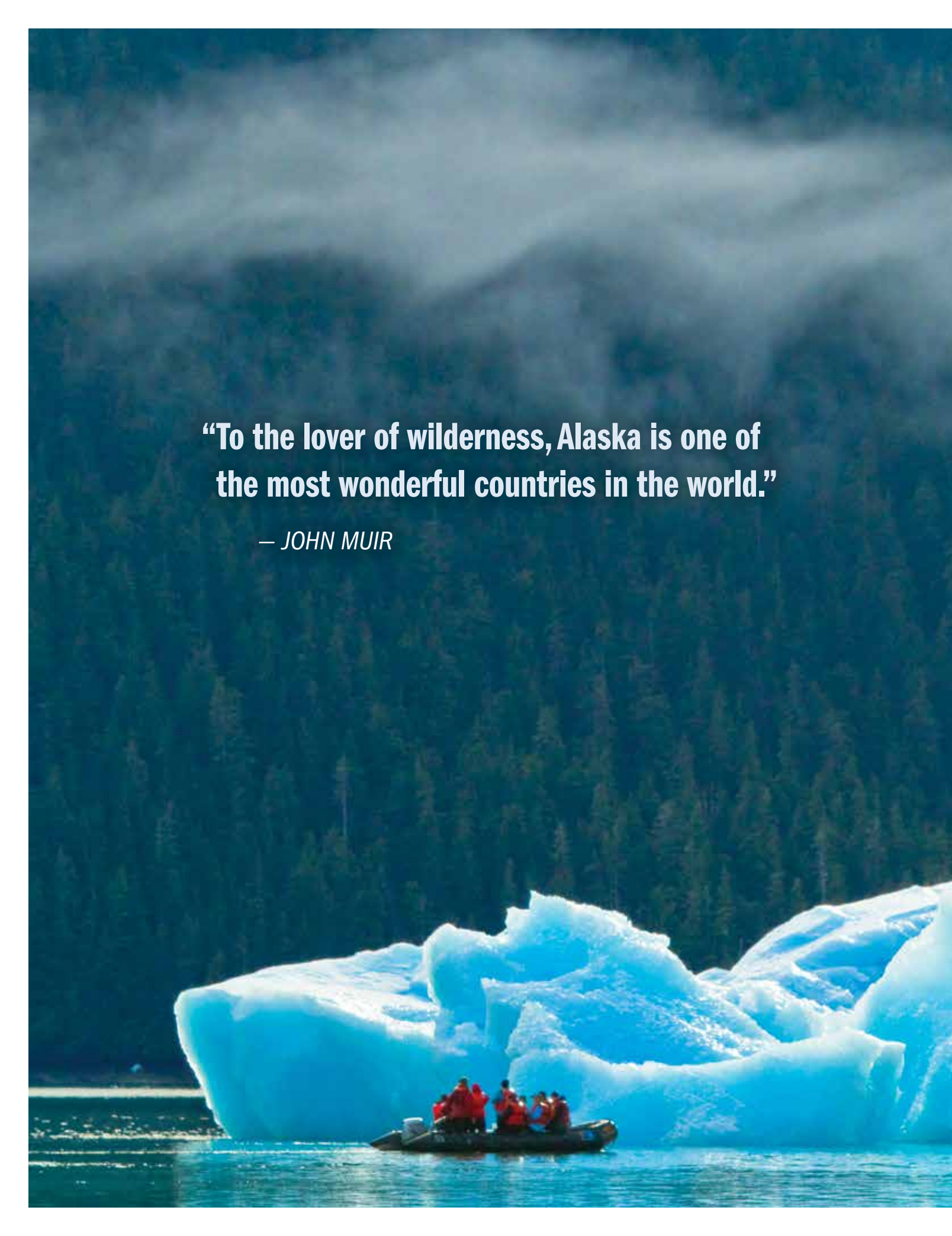
ABOARD THE 62-GUEST *NATIONAL GEOGRAPHIC SEA LION & SEA BIRD* | 2015



Lindblad
Expeditions



NATIONAL
GEOGRAPHIC™



**“To the lover of wilderness, Alaska is one of
the most wonderful countries in the world.”**

— JOHN MUIR

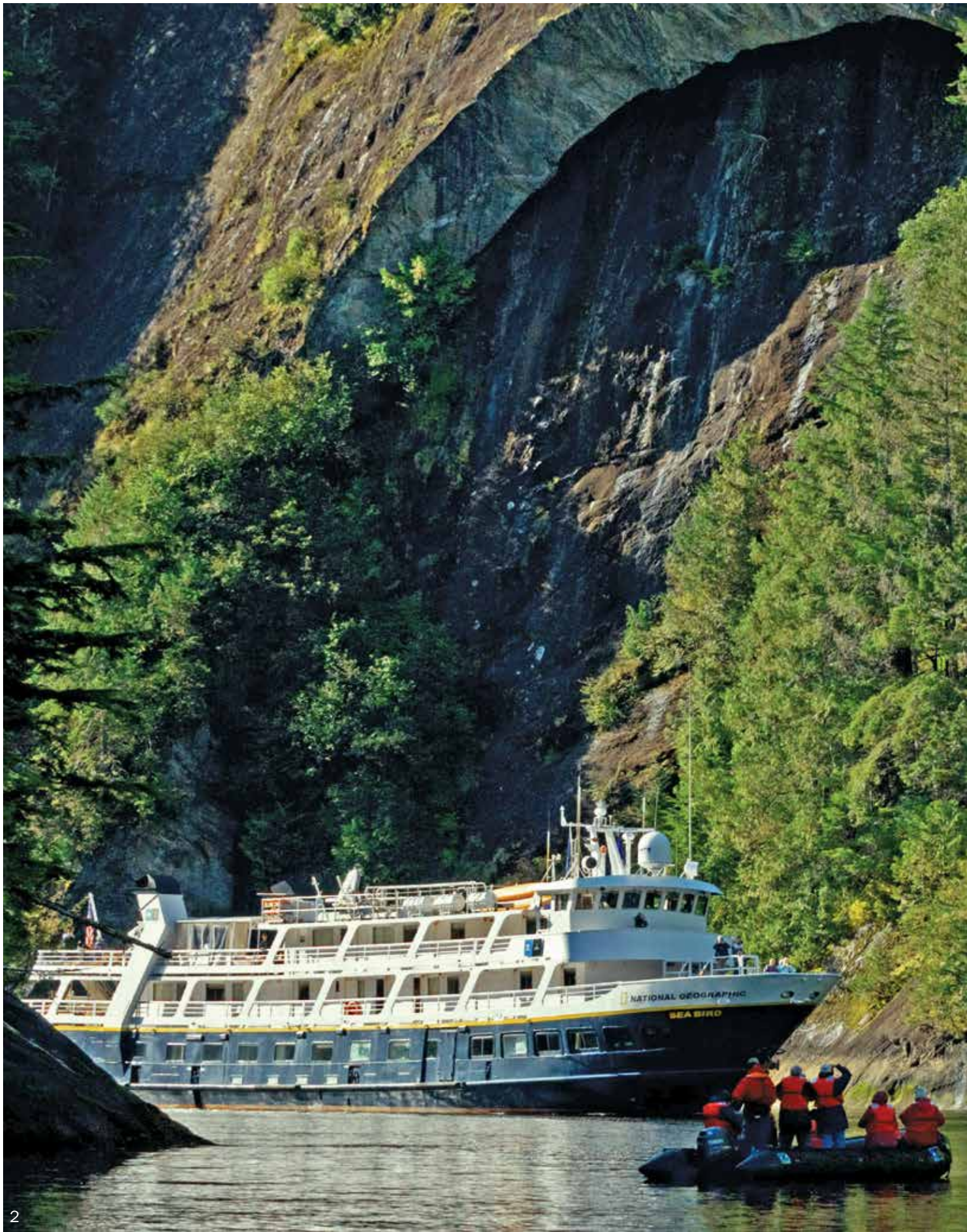
As astonishing as the photos in National Geographic
And an exhilarating life adventure:

A Lindblad-National Geographic In-depth Alaska Expedition



Lindblad Expeditions and National Geographic have joined forces to further inspire the world through expedition travel. Our collaboration in exploration, research, technology and conservation will provide extraordinary travel experiences and disseminate geographic knowledge around the globe.

Cover photo: Orca whales at sunset. Left: Guests explore Le Conte Bay's glacial ice aboard an expedition landing craft.





SEE THE ALASKA YOU WOULD MISS OTHERWISE



Whale fluke.

To discover the wild, awe-inspiring reaches of Southeast Alaska, you have to sail into the narrow channels where whales and wildlife come to feed; and sail up winding fjords that terminate in towering glaciers—and then venture even closer aboard

expedition landing craft and kayaks. Our **62-guest expedition ships** are perfectly sized for in-depth exploration. Ample deck space easily accommodates all guests at once to share the best views and the thrills of each sighting—whales breaching and feeding, glaciers crashing, and bears foraging along the shore—plus, **gain valuable insights through commentary** from your expedition team, the largest in Alaska with five naturalists and an expedition leader.

Special permits from the National Park Service and U.S. Forest Service allow us to sail far into Glacier Bay National Park and wild, remote regions of the Tongass National Forest. And you'll go even more in-depth with cool tools for exploring, including a **fleet of eight solo and 12 double kayaks and five expedition landing craft**. Board one to draw close to glaciers, or paddle a kayak in a peaceful cove for a personal, water-level encounter with wildness. A **hydrophone** allows us to listen to the strange vocalizations of whales, and a **video microscope** to see the tiny creatures that make this water so productive, plus an **undersea specialist** films during dives to reveal the mysteries of the deep.



Above: Our ships are outfitted with a fleet of solo and tandem kayaks that allow you to explore at your own pace; Left: National Geographic Sea Bird in Alaska transits Misty Fjords National Monument, Southeast Alaska.

DISCOVER ICONIC AND UNEXPECTED WILDLIFE

With 30+ years of exploration in Alaska, we've discovered when and where to go to get you up close to Alaska's iconic wildlife, as well as the smaller, unheralded creatures.

In springtime bears awake to forage along the intertidal zones where we can observe them from our ship. Linger on deck as we sail through forest-framed channels and watch humpback whales tail-lobbing and feeding—no binoculars needed. See hauled out Steller sea lions from our expedition landing craft, killer whales slicing through the water in pursuit of prey, and playful otters resting in kelp forests while diving down to collect sea urchins.



Eagle.

Gaze upward in search of mountain goats, who seemingly thread their way along impossible cliffs. See eagles, puffins, guillemots, kittiwakes, and murre. Birders can sometimes tick off a dozen species

in a single afternoon. Experience the peace of standing at the foot of towering hemlock and Sitka spruce trees. And discover the creatures you never imagined: carnivorous plants, brilliantly colored anemones, and strange banana slugs.



Harbor seal.



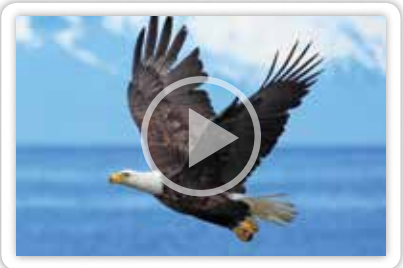
Brown bear.

It's one National Geographic moment after another, as the clips below show. Each is worth more than a thousand words. So, take a look at why exploring Alaska is so thrilling.



WILD WATERS

» EXPEDITIONS.COM/WILDWATERS



THIS CLOSE

» EXPEDITIONS.COM/THISCLOSE



ALASKA SPRING

» EXPEDITIONS.COM/ALASKASPRING



“Watching humpback whales is a life-changing experience. Lindblad Expeditions-National Geographic has contributed to the knowledge base of this unique community of these findings with travelers in the depths of the Alaskan wilderness.”

— DR. FRED SHARPE, PRINCIPAL INVESTIGATOR,
ALASKA WHALE FOUNDATION

THE RICHEST WHALE VIEWING EXPERIENCE

In springtime humpback mothers and their calves return from their birthing grounds to feed in Alaska. Our ships allow us to go deeper into the domain of the whales. With our knowledge and skill in timing, we can position perfectly to be “there” when whales are—creating amazing observations and photo ops. In addition, researchers from the Alaska Whale Foundation come aboard to share their knowledge and latest findings about humpback behavior. They are able to provide insight into some of the whale behaviors we may see, including tail-lobbing, lunge-feeding and even bubblenet feeding strategies. And if the opportunity arises, our naturalists may even drop a hydrophone to reveal the whales’ communication, or give you a whale’s-eye view through exclusive footage shot by National Geographic’s Crittercam team.



Dr. Fred Sharpe

» SEE WHAT'S IT'S LIKE AT [EXPEDITIONS.COM/WHALES](https://www.lindblad.com/expeditions.com/whales)



Breaching humpback whale.



EVEN EXPLORE THE **ALASKAN UNDERSEA**

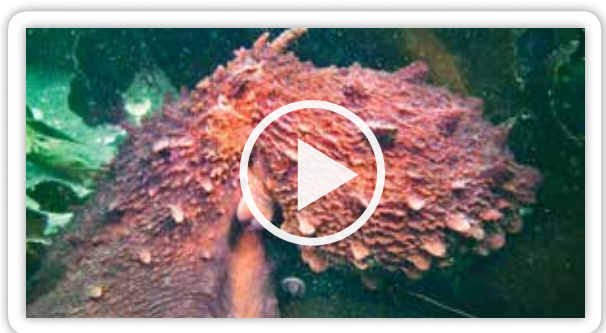
See more of Alaska than you ever imagined. No other travel company offers an exploration of the vivid and surprising undersea life found in Alaska. On every departure your undersea specialist will don special cold-water diving gear to explore the depths of the undersea to shoot video of the otherworldly creatures, which you'll see on TV screens from the comfort of the lounge. See the vast kelp forests swaying in the currents and discover strange and wonderful marine life: anemones, jellies, rockfish and unusual life forms that are only found beneath the water's surface. Watch as your undersea specialist's bright lights dance across the seafloor, revealing the brilliant purples and greens.



Left: A sunflower star is one of the unusual life forms that is part of benthic life in Alaska. Above: Bright lights reveal the vibrant seafloor of benthic life in Alaska.

“Guests are so surprised by the colors. They don’t expect to see pinks and yellows and purples. They expect it to be all drab and browns and greens, but it’s absolutely beautiful down there.”

—JUSTIN HOFMAN, UNDERSEA SPECIALIST



**WATCH A FASCINATING
PACIFIC OCTOPUS ENCOUNTER**

» [EXPEDITIONS.COM/OCTOPUS](https://www.expeditions.com/octopus)



Download a QR code Reader app with your smart phone and scan this code.



INTO THE MYSTIC HAIDA GWAII

Though Haida Gwaii, a spectacular archipelago off British Columbia, is known as the “islands at the edge of the world,” it is well within reach aboard the *National Geographic Sea Bird and Sea Lion*—the only U.S. vessels permitted to visit these hallowed islands in over twenty years. In large part, we were initially permitted to visit Haida lands because of our commitment to artisans, evidenced by our Artisan Fund and its varied projects, currently financed by a percentage of sales from onboard Global Galleries. The Haida are legendary Pacific coast artists and artisans. And to see their works, most strikingly the totems created by master carvers, and to hear the stories woven into the very fibers of Haida regalia, is indeed a privilege. We will visit the Haida Heritage Center at Kay Lnagaay, see a panoply of Haida art and crafts, even see artists at work. But we will also experience the rare, spiritually satisfying adventure of exploring the coasts and landing on remote beaches to share the silence with silvered sentinels—the weathered totems, carved lifetimes ago, that have kept watch on Haida lands since the first days.

When we return this May, the islands will be awakening from their winter slumber. Humpback whales will gorge on krill and the lush forests will warm, while still snow-clad mountains set the perfect context for this entrée into the life of the Haida.

“We feel so privileged to be able to offer our guests the opportunity to visit Haida Gwaii, and interact with this community of first generation people, and to experience their art and handcraft, among the most extraordinary in the world, first hand from the artists themselves. And to travel up and down the coast, landing on some of the extraordinary beaches where some of the totems, over a hundred years old, beautifully weathered, still remain...”

— STACY SINDLINGER, DIRECTOR OF ARTISAN DEVELOPMENT, LINDBLAD EXPEDITIONS



The sun sets over Haida Gwaii. Above from left: Silvered totem at SGang Gwaay (Ninstints); Traditional Haida canoes.

ENJOY ACCESS TO MYTHIC LANDS

Our first encounter with Haida Gwaii took place last season. Our guests enjoyed a remarkably warm and rewarding welcome. However, this year promises to provide an even richer experience, since we return as friends—to be welcomed not only into Haida villages, but into Haida homes and workshops, as well.



Join us and see why *National Geographic Traveler* listed Haida Gwaii as one of the “Top 20 Places You Should See in 2015.” Over three days, we’ll meet with world-class Haida artisans and visit their

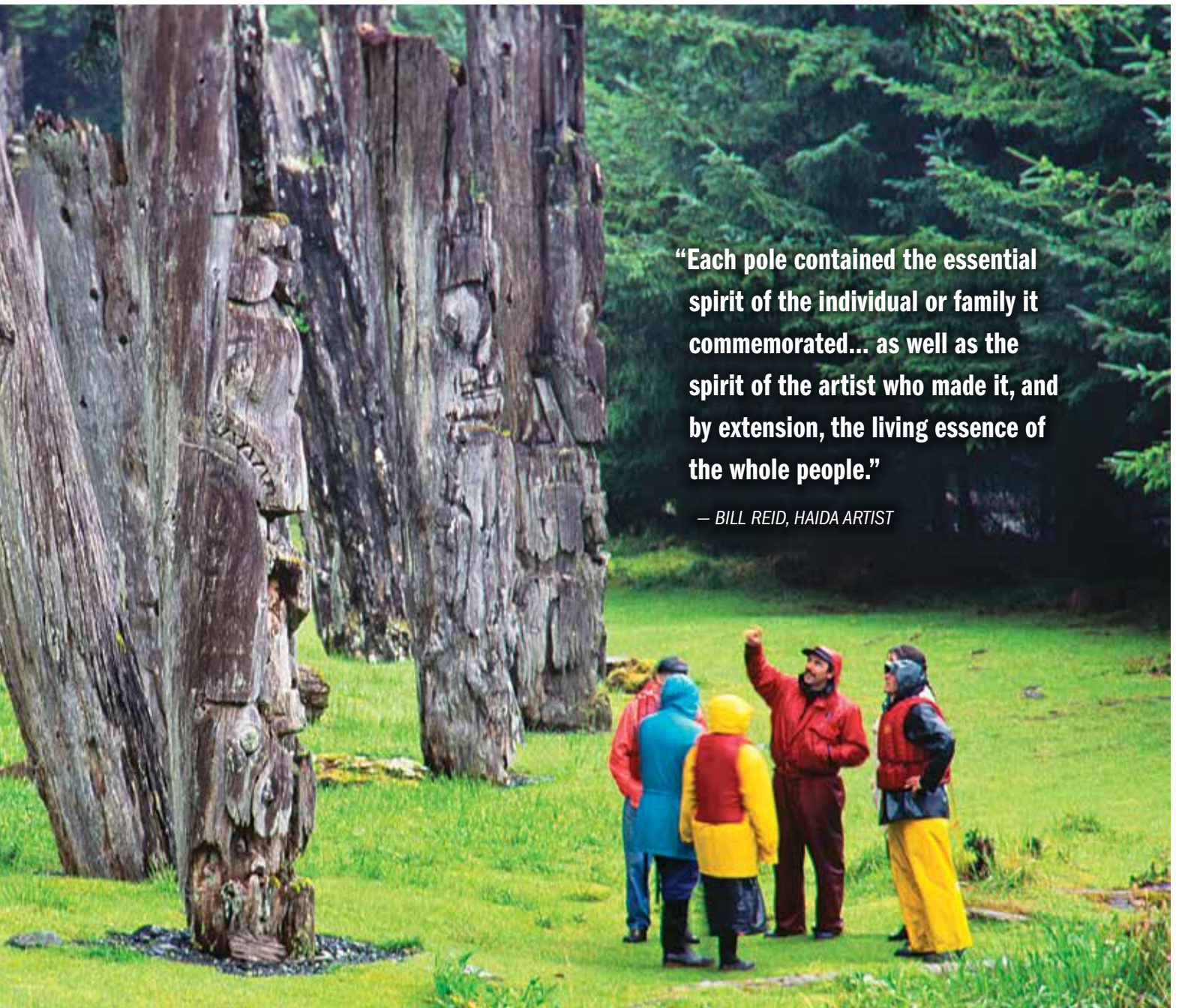
workshops; witness dances passed down through the generations; and hear the stories that span time and space. We’ll walk in the footsteps of chiefs and carvers, warriors and weavers, shamans and singers; people as connected to the land as the very trees from which they once made their homes.

During our exploration we are accompanied by Haida cultural interpreters, experts on their heritage. And we will encounter a wealth of cultural objects. The Haida Heritage Centre alone holds what NG Explorer-in-Residence Wade Davis calls, “the finest collection of argillite carvings in the world.”

We’ll visit the iconic and ancient village of SĠang Gwaay Lnagaay, where silvered totem poles some 150-200 years old still line the shore. UNESCO listed SĠang Gwaay as a World Heritage Site in 1981, the same year they registered the Serengeti, Great Barrier Reef, and the Old City of Jerusalem and its walls as World Heritage sites.

We are privileged to explore Haida Gwaii, and are proud to share the opportunity with you.





“Each pole contained the essential spirit of the individual or family it commemorated... as well as the spirit of the artist who made it, and by extension, the living essence of the whole people.”

— BILL REID, HAIDA ARTIST



Clockwise from top: SGang Gwaay (Ninstints) is a UNESCO World Heritage site with the remains of houses and carved mortuary and memorial poles that illustrate the Haida way of life; Our Haida cultural interpreters who accompany us on the visit reveal fascinating facets of all we'll see; Contemporary Haida carver at work; A cultural dance performance.

AN EXPEDITION TEAM THAT MAKES THE DIFFERENCE

Over the 45+ years of our history, the quality of our veteran staff and their companionship is the reason the Lindblad name is known and respected for top-quality expeditions. Your team consists of an expedition leader and five naturalists, including a Lindblad-National Geographic certified photo instructor and an undersea specialist, in addition to a wellness specialist. We invest significantly to keep a guest-to-staff ratio of 10:1. This means optimally-sized groups for you, plus diverse expertise and varying perspectives.

Hiking through a lush old-growth forest.

REPRESENTING OUR ALASKA SEASON TEAM:



EXPEDITION LEADER JEN MARTIN is an expert at sharing the diversity of wildlife and indigenous cultures of the places we explore.



NATURALISTS PETE & GRETCHEN PEDERSON are former Backcountry Rangers and guides in Denali National Park and accomplished wildlife biologists.



NATURALIST LEE MOLL is a professional naturalist with a particular interest in botany, marine mammals, ornithology, and geology.



NATURALIST/CERTIFIED PHOTO INSTRUCTOR SHARON GRAINGER is also an anthropologist, psychologist, and ethnobotanist.



NATURALIST/UNDERSEA SPECIALIST/PHOTO INSTRUCTOR JUSTIN HOFMAN shoots video to bring the mysterious undersea to life.



WELLNESS SPECIALIST SUSAN MOEBUS is a licensed massage therapist, and embodies the mind-body spirit of our expeditions.

LEARN THE LEGENDS OF GLACIER BAY ON EVERY EXPEDITION

On every Alaska expedition a Huna Tlingit Interpreter joins us aboard as we sail into Glacier Bay National Park. This land is their ancestral home, and we see beyond its spectral glaciers and pristine wildness, cast in a new light through their lore and legends.



NATIONAL GEOGRAPHIC

EXPERTS ON BOARD

CASEY ANDERSON

Host of *Expedition Wild* on the National Geographic Channel, Casey Anderson is the trainer and best friend of Brutus the Bear, a grizzly cub he rescued. A bear expert, he is the co-owner and director of the Montana Grizzly Encounter, a sanctuary in Bozeman, Montana.



See bears with Casey on the **May 16** and **May 23** departures of **Exploring Alaska's Coastal Wilderness**.

JON WATERHOUSE

National Geographic Fellow and Presidential appointee to advise the Commission for Environmental Cooperation, Jon Waterhouse offers insight on conservation and indigenous communities. In 2007, a request by the native elders and tribal leaders living in the Yukon River watershed that he “go out and take the pulse of the river” led to an effort to remove more than 12 million pounds of trash from the Yukon watershed.



Join Jon on the **June 27** departure of **Exploring Alaska's Coastal Wilderness**.

EXPEDITION PHOTOGRAPHY OUR EXCLUSIVE PROGRAM

Unique in the world of travel, our Expedition Photography program offers guests of every skill and interest level unrivaled photography opportunities—including a Lindblad Expeditions-National Geographic certified photo instructor on board every expedition. Photo enthusiasts, from beginner to semi-pro can stand side-by-side with accomplished photographers and pick up tips in an extraordinary field environment. Their expertise will inspire you and help you improve your skills—so you can return home with great shots, or a complete photo record of your experience of a lifetime.



Top: Our ships are excellent platforms for photography; Guests get an up-close look at Steller sea lions aboard expedition landing craft.





NATIONAL GEOGRAPHIC

TRAVEL WITH NATIONAL GEOGRAPHIC PHOTOGRAPHERS

Certain Alaska departures are Photo Expeditions offering total immersion in the world of professional travel and wildlife photography. They offer the unprecedented opportunity to shoot with and learn from a National Geographic photographer and two Lindblad Expeditions-National Geographic certified photo instructors. Outings are timed to take advantage of the best lighting, and on board seminars and photo talks offer tips and tricks.

Photo Expeditions offer all the same experiences and opportunities as all our expeditions—the cool tools to explore, kayaking, hiking, and up-close encounters with wildlife—plus the chance to develop photography skills that will last a lifetime.

2015 PHOTO EXPEDITIONS
Exploring Alaska's Coastal Wilderness:
Jun. 13, 20; Aug. 29, 30
A Remarkable Journey to Alaska, British Columbia & Haida Gwaii: May 2, 3; Sep. 5, 6

Choose a select departure and learn from these Top National Geographic Photographers



RICH REID
MAY 2
Filmmaker, environmental and adventure photo expert.



FLIP NICKLIN
AUG. 29 & SEP. 5
Alaska resident and legendary marine mammal photographer.



MACDUFF EVERTON
MAY 3
Contributing editor of *National Geographic Traveler*.



SUSAN SEUBERT
AUG. 30 & SEP. 6
Photographer with more than 20 *National Geographic Traveler* features.



MICHAEL MELFORD
JUN. 13 & 20
A National Geographic Society photographer for over 25 years.





Our newly refurbished lounge.



On the bridge.





Cocktails at Recap.



Guests get a front row seat to Alaska's natural beauty on the bow of our ships.

JOY OF ALASKA EXPEDITION-STYLE

Our founder, Sven Lindblad, spent his formative years in Africa, working as a guide with a high-end safari operator, and the words of his mentor have always stayed with him: “only a fool has to suffer in the bush.” That’s why our hotel staff and chefs are integral to every expedition—as important to the intricate calculus of happiness aboard as the expedition leader and the captain. Their ability to respond flexibly keeps our vital expeditionary spirit fed, so to speak. You can eagerly rush to the deck for a spontaneous dinner hour whale sighting, without fear that it’s wreaking havoc in the kitchen. Dinner will still be superb. Like the ship’s connectedness to the outdoors, each meal is a window of sorts, reflecting local, sustainable cuisine whenever possible, including fresh fish from Alaskan waters. Breakfast, lunch and dinner aboard earn rave reviews from guests. You’ll discover that life aboard our 62-guest expedition ships is warm and welcoming, with everyone participating equally in the adventure. Evening Recaps in the lounge are a chance to swap stories of the day’s surprises with family and new friends over hors d’oeuvres and cocktails.



Above: Head chef Adam displays outstanding cuisine, featuring local produce and sustainably harvested seafood.

EXPLORING ALASKA'S COASTAL WILDERNESS

8 DAYS/7 NIGHTS—ABOARD *NATIONAL GEOGRAPHIC SEA BIRD*
AND *NATIONAL GEOGRAPHIC SEA LION*

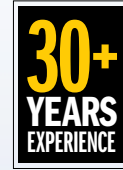
PRICES FROM: \$6,290 to \$11,010 (See page 27 for complete prices.)

Experience the remarkable beauty of Southeast Alaska on a voyage aboard the *National Geographic Sea Bird* or *National Geographic Sea Lion* into a land of mist-shrouded fjords, tidewater glaciers, and islands teeming with wildlife. Search for orcas and humpback whales, kayak amid glacial ice, spend a full day in Glacier Bay National Park, and learn about Alaska's rich Tlingit heritage.

EXPEDITION HIGHLIGHTS

- ▶ Kayak into protected coves and look for sea otters, seabirds, and harbor seals.
- ▶ Hike through lush forests to cascading waterfalls, and ride an expedition landing craft into coves to look for brown bears.
- ▶ Meet members of the Alaska Whale Foundation to learn about the local whale population, and get a firsthand perspective on Alaska's indigenous people from a Tlingit cultural interpreter.
- ▶ Discover Alaska's seldom-seen, vibrant marine life revealed by our undersea specialist.

EXPERIENCE & EXPERTISE



Our unparalleled 6-person expedition team is key to an in-depth experience.

An expedition leader, three naturalists, a Lindblad-

National Geographic certified photo instructor and undersea specialist, plus a wellness specialist and video chronicler, all contribute to your understanding of Alaska's wonders. Certain departures will feature a National Geographic photographer or expert.

Visit our website to read staff and guest speaker bios for this expedition.

Humpback whale shows off its fluke as it dives.



DAY 1: JUNEAU, ALASKA/EMBARK SHIP

Fly from Seattle to Juneau. Meet your naturalists and visit Mendenhall Glacier, set in the dramatic Mendenhall Valley. Settle into your cabin before dinner. Later, explore the port of Juneau on your own. (D)

DAY 2: TRACY ARM—FORDS TERROR WILDERNESS

Voyage into Tracy or Endicott Arm, both spectacular fjords, with waterfalls cascading from glacially carved walls. See the soaring Dawes or South Sawyer Glacier up close and take a cruise in an expedition landing craft for an unbeatable view of sculpted icebergs. Keep an eye out for harbor seals, porpoises and arctic terns. (B,L,D)



Petersburg.

DAY 3: PETERSBURG

Search for humpback whales as we head towards the small, true Alaskan town of Petersburg on Mitkof Island. Explore a unique Southeast Alaskan ecosystem, the “muskeg,” with stunted trees and carnivorous plants. There is an opportunity for bike riding and an optional floatplane excursion. Enjoy a crab feast this evening. (B,L,D)

DAY 4: FREDERICK SOUND AND CHATHAM STRAIT

With luck, we'll see whales breaching, tail-slapping and feeding. We'll explore spectacular bays and inlets, following bear trails and salmon streams. Later, hike or kayak for up close exploration. (B,L,D)

DAY 5: ICY STRAIT AND THE INIAN ISLANDS

Explore among the Inian Islands, where an abundance of Steller sea lions and sea otters reside. We'll search for whales in the rich waters of Icy Strait and choose the perfect spot around Chichagof Island to hike and kayak. (B,L,D)

DAY 6: GLACIER BAY NATIONAL PARK

By special permit, we explore Glacier Bay, a not-to-be-missed gem of Alaska. See glaciers that end abruptly at the water's edge and observe them “calving”—tons of ice crashing into the sea—accompanied by an exhilaratingly thunderous sound. Wilderness abounds—mountain goats and brown bears patrol the shore; harbor seals, Steller sea lions and puffins live in these icy waters. A native Tlingit interpreter joins us to share the lore and legend of the area. We will also be joined by a National Park Service Ranger. (B,L,D)

DAY 7: SOUTHEAST ALASKA'S ISLANDS, BAYS AND FJORDS

Today, nature is our guide. We may explore an isolated beach to take a closer look at tide pools, beachcomb, and hike stunning forest trails, or see bear tracks worn into the soil while walking an isolated meadow. Sightings of bald eagles are very common. If conditions permit, we'll do some kayaking, always watching for marine and terrestrial life. (B,L,D)

DAY 8: SITKA/DISEMBARK/SEATTLE

After breakfast we disembark in Sitka, Southeast Alaska's only oceanfront town. Visit the onion-domed St. Michael's Russian Orthodox Church. At the Raptor Rehabilitation Center, we have close views of species normally seen at a distance. Drive to the airport for our afternoon flight to Seattle. (B)



Alaska's still waters are perfect for kayaking.



EXPEDITION DETAILS

DATES: 2015: May 16*, 17*, 23, 24, 30*, 31*; Jun. 6, 7, 13*📷, 14*, 20📷, 21, 27*, 28*; Jul. 4, 5, 11*, 12*, 18, 19, 25*, 26*; Aug. 1, 2, 8*, 9*, 15, 16, 22*, 23*, 29📷, 30📷

*Indicates itineraries in the reverse order, from Sitka to Juneau.

📷 Photo Expedition. These departures are for passionate photographers with hands-on instruction from our Photo Expedition team.

NATIONAL GEOGRAPHIC EXPERTS

Join National Geographic TV host and bear expert **Casey Anderson** on **May 16** and **23**; award winning National Geographic photographer **Michael Melford** on **June 13** and **20**; conservationist and expert on indigenous communities **Jon Waterhouse** on **June 27**; and National Geographic photographers **Flip Nicklin** on **Aug. 29** and **Susan Seubert** on **Aug. 30**.

SPECIAL OFFER:

Book by Mar. 31, 2015 and receive complimentary round-trip airfare between Seattle and Alaska on select May and June, 2015 departures.

EXPLORE TONGASS NATIONAL FOREST

Our Forest Service Special Use Permit for Tongass National Forest enables you to hike and kayak in wild and remote areas of Southeast Alaska.

OPTIONAL SEATTLE EXTENSION

Add three days pre-voyage exploring Seattle and Mt. Rainier National Park. Tour Seattle's Pike Place Market, historic waterfront, and art museum. Hike or snowshoe Mt. Rainier with a naturalist. Call for details.

A REMARKABLE JOURNEY TO ALASKA, BRITISH COLUMBIA & HAIDA GWAI

15 DAYS/14 NIGHTS—*NATIONAL GEOGRAPHIC SEA BIRD & SEA LION*

PRICES FROM: \$10,390 to \$17,790 (See page 27 for complete prices.)

Join a unique expedition in Alaska's Inside Passage and British Columbia including Haida Gwaii (formerly the Queen Charlotte Islands) off the coast of British Columbia. We are the only company with ships carrying more than 22 guests permitted to visit Gwaii Haanas National Park Reserve, National Marine Conservation Area Reserve, and Haida Heritage site in over two decades. Here, you'll see the ancient totems at S_Gang Gwaay (Ninstints), a UNESCO World Heritage site, meet with local artisans, in a region rich with seldom-seen endemic species.

EXPEDITION HIGHLIGHTS

- ▶ Explore glacially-carved fjords, Glacier Bay National Park, and search for humpback whales in their summer feeding grounds.
- ▶ Kayak spectacular bays, see waterfalls cascading from glacially carved walls, and hike old-growth forest where paw prints outnumber foot prints.
- ▶ Explore ancestral Haida villages, see ancient totem poles, take part in a traditional dance performance, and much more.
- ▶ Be amongst endemic species in Haida Gwaii, considered the "Canadian Galápagos" for its wildlife-rich intertidal zone.

EXPERIENCE & EXPERTISE

30+
YEARS
EXPERIENCE

Our unparalleled 6-person expedition team is key to an in-depth experience. An expedition leader and five naturalists, including a certified photo instructor and undersea specialist, contribute to your understanding of Alaska's wonders, in addition to a wellness specialist and video chronicler. National Geographic experts and photographers will add more learning on each departure.

Visit our website to read staff and guest speaker bios for this expedition.

Haida Gwaii Totem pole depicting the three watchmen holding the moon, with a half moon in the distance.



DAY 1: SEATTLE/EMBARK

Arrive in Seattle this afternoon and embark the ship. (D)

DAY 2: GULF ISLANDS, BRITISH COLUMBIA

Search for orca whales and cruise around forested islands. (B,L,D)



Sea otter.

DAY 3: JOHNSTONE STRAIT AND ALERT BAY, BRITISH COLUMBIA

Visit the U'mista Cultural Centre in Alert Bay, where we'll watch traditional First Nations performances and learn from the Kwakwaka'wakw people. (B,L,D)

DAY 4-5: INSIDE PASSAGE OF BRITISH COLUMBIA

Head northward along the untouched coastline looking for whales, dolphins, bears, deer and other wildlife. Go ashore to explore or kayak the many bays and inlets. (B,L,D daily)

DAYS 6-8: HAIDA GWAI

With a shared respect for the natural world, explore the islands of Haida Gwaii. A Haida cultural interpreter will join us, first visiting the Haida Heritage Center at Kay Llnagaay to learn about the incredible history of the Haida people and the meaning behind their renowned artwork. In the ancestral town of Old Massett, join in a traditional dance performance and feast, and meet local artisans. Explore the Gwaii Haanas National Park Reserve, National Marine Conservation Area Reserve, and Haida Heritage Site. See the ancient totems at SGang Gwaay (Ninstints) or K'una (Skedans). Kayak and take expedition landing craft around the incredibly biodiverse

islands where endemic species thrive. (B,L,D daily)

DAY 9: MISTY FJORDS, ALASKA

Cruise past glacially carved cliffs and kayak in the stillness of Misty Fjords' forested backwaters. (B,L,D)

DAY 10: FREDERICK SOUND AND PETERSBURG

Join naturalists on deck and search for orcas, humpback whales, and Steller sea lions. Go ashore for a walk along a quiet forest trail and visit the fishing village of Petersburg, known as "Alaska's Little Norway." Enjoy a crab feast this evening. (B,L,D)

DAY 11: TRACY ARM-FORDS TERROR WILDERNESS

Voyage into Tracy or Endicott Arm, both spectacular fjords, with waterfalls cascading from glacially carved walls. See the soaring Dawes or South Sawyer Glacier up close and take a cruise in an expedition landing craft for an unbeatable view of sculpted icebergs. (B,L,D)

DAY 12: JUNEAU

Visit Mendenhall Glacier to observe the ever-changing ice-carved valley up close and explore downtown Juneau. (B,L,D)

DAY 13: GLACIER BAY NATIONAL PARK

Spend the entire day among enormous glaciers and expansive wilderness. Listen as the quiet stillness of the area is broken by the thunder of tons of ice calving into the sea. A native Tlingit interpreter joins us to share the lore and legend of the area. A National Park Service Ranger will join us as well. (B,L,D)

DAY 14: SOUTHEAST ALASKA'S ISLANDS, BAYS AND FJORDS

Kayak and hike among forested islands on our final exploration of Southeast Alaska. (B,L,D)

DAY 15: SITKA/DISEMBARK/HOME

See the picturesque city of Sitka on Baranof Island and meet eagles up close at the Raptor Rehabilitation Center before transferring to the airport for flights to Seattle. (B)



EXPEDITION DETAILS

DATES: 2015 May 2 📷, 3 📷; Sep. 5* 📷, 6*

📷 *These departures travel in the reverse order, from Sitka to Seattle, making all the same stops.

📷 Photo Expedition

NATIONAL GEOGRAPHIC EXPERTS

Travel with National Geographic photographer **Rich Reid** on the May 2 departure or **Macduff Everton** on May 3. Join marine mammal photographer **Flip Nicklin** on Sep. 5. National Geographic photographer **Susan Seubert** will be aboard on Sep. 6 departure.

SPECIAL OFFER:

Book by Mar. 31, 2015 and receive **FREE** one-way air (Sitka/Seattle) on the May 2 or May 3, 2015 departures.

MORE ADVENTURE: ADD DENALI NATIONAL PARK

PRE- OR POST-VOYAGE EXTENSION
7 DAYS/6 NIGHTS

PRICES: \$5,690 per person double occupancy, \$8,090 per person single occupancy.

Note: This extension is available between May 30 and September 6, 2015. Limited space available.

Make the most of your time in Alaska by combining your expedition with six nights in Denali National Park and add an inland exploration of this iconic land to your coastal adventure. With the idyllic North Face Lodge as your base camp, you'll experience Denali National Park as few visitors get to. Set deep in the heart of the park, this unique wilderness retreat offers unparalleled views of Mt. McKinley, a wide range of outdoor activities and nightly presentations that emphasize Denali's natural and cultural history, locally-sourced cuisine and special access to the park. The North Face Lodge's relationship with the park ensures exclusive opportunities for you to explore Denali's most pristine backcountry areas for prime hiking and wildlife viewing. Additionally, the small group size of 11 guests per every naturalist enhances the intimacy of outings and opportunities for in-depth learning.

EXPEDITION HIGHLIGHTS

- ▶ Stay at a unique wilderness retreat with breathtaking views of Mt. McKinley.
- ▶ Enjoy special access to prime hiking and wildlife viewing areas in pristine wilderness.
- ▶ Travel first class aboard the Alaska Railroad.



Canoeing is a great way to discover Denali's dramatic landscape.

DAY 1: FAIRBANKS, ALASKA

Arrive in Fairbanks, transfer to your hotel and settle into your river view cabin at Pike's Waterfront Lodge. This evening meet your leader and traveling companions at a welcome dinner. (D)

DAY 2: FAIRBANKS/DENALI NATIONAL PARK/NORTH FACE LODGE

In the morning visit the University of Alaska Fairbanks Museum, featuring collections that represent over 11,000 years of cultural traditions in the North. In the late morning we depart on a wildlife drive to our temporary home located within the heart of the park, the North Face Lodge. We'll travel in the lodge's private buses, on the otherwise highly restricted Denali Park Road, in order to access prime wildlife viewing areas; a privilege extended to the owners of North Face Lodge and their guests. The seven-hour, 90-mile drive is rife with opportunities to



Brown bear.

search for Denali's famed wildlife: grizzlies, caribou, moose, Dall sheep, wolves, eagles, arctic terns, and more. We'll enjoy a hearty, picnic-style dinner, served at the midpoint of the drive alongside the East Fork River. Regular stops at National Park Service facilities provide additional chances to stretch your legs. (B,L,D)

DAY 3-5: DENALI NATIONAL PARK/NORTH FACE LODGE

Immerse yourself in the remote wildness and north-country charm of the North Face Lodge, and become one with nature. See Denali's rich wildlife, flora and fauna firsthand and learn about its natural history during the daily activities of your choice—hiking, canoeing, fishing, and biking. Hiking is among guests' favorite activities, as the lodge offers exclusive opportunities to hike with

trained naturalist guides in the protected wilderness backcountry of Denali National Park. Optional flightseeing offers breathtaking aerial views of Alaska and is available at an additional cost. Days wind down with nightly presentations by the fireplace that focus on various aspects of Denali's natural and cultural history, including birds, mammals, wildflowers, tundra ecology, geology, mountaineering, land use, and natural resource issues. Rest well in lovely, comfortable rooms, and enjoy delicious meals featuring fresh baked goods and locally-grown produce throughout your stay. (B,L,D)

DAY 6: DENALI NATIONAL PARK/ ANCHORAGE

This morning we check out of the North Face Lodge and enjoy the scenic drive back out to the park entrance. Continue to experience the grandeur of Alaska aboard the Alaska Railroad, enjoying the first class, GoldStar Service en route to Anchorage. Lavishly appointed cars feature custom-designed interiors highlighted with original Alaska art and a private outdoor viewing deck. Dinner will be served on board the train. Overnight at the Anchorage Hilton Hotel. (B,L,D)

DAY 7: ANCHORAGE/SITKA OR JUNEAU/ HOME

This morning fly to either Sitka or Juneau to begin your Alaska voyage. Or, if your extension is taken after your voyage, transfer to the airport for connecting flights home. (B)



EXPEDITION DETAILS

This seven-day extension can be taken before or after select **Exploring Alaska's Coastal Wilderness and A Remarkable Journey to Alaska, British Columbia & Haida Gwaii** departures between May 30 and September 6, 2015.



Dall sheep.

Notes: Payment and Cancellation terms for Denali are different from our standard terms. Please see page 29 or visit our website for details.

Depending on your departure date, you may be responsible for one night on your own before or after joining the Denali extension. Please call for details.



Mighty Mt. McKinley rises out of Denali National Park.

National Geographic Sea Bird & National Geographic Sea Lion

CAPACITY: 62 guests in 31 outside cabins.

REGISTRY: United States. **OVERALL LENGTH:** 152 feet.

PUBLIC AREAS: Our twin sister ships feature a library; global market; lounge with full-service bar and facilities for films, slide shows and presentations; observation deck; partially covered sundeck with chairs and tables. Our “open bridge” provides guests an opportunity to meet our officers and captain and learn about navigation.

MEALS: Served in single seatings with unassigned tables for an informal atmosphere and easy mingling. Breakfast is a wide selection buffet and lunch is often served family style. Menu emphasizes local flair.

CABINS: All face outside with windows, private facilities and climate controls.

EXPEDITION EQUIPMENT: Bow camera, hydrophone, kayaks, Splash-Cam, underwater video camera, video microscope, and expedition landing craft.

SPECIAL FEATURES: Guest Internet access. A video chronicler on board all voyages.

WELLNESS: The vessel is staffed by a wellness specialist and features exercise equipment, LEXspa and outdoor stretching area.



National Geographic Sea Bird.

THE PRIVILEGE OF ALASKA'S WILDNESS, THE LUXURY OF COMFORT

Our twin ships have been transformed. The lounge and bar, center of onboard life, have been handsomely re-styled and renovated to accommodate the expedition community. The refreshed dining room is now doubly welcoming. And every cabin in every category has been outfitted with fresh cherry veneer and our signature bed linens. From the sleekly framed photos on the walls, to the fresh paint, carpets and polished brass, each ship sets new standards for expedition hospitality and comfort.

Travel Planning With A Difference

Half of travel planning is learning what you don't know and generating questions. The other half is getting answers.

When you call **1.800.EXPEDITION**, you can ask for any one of our Expedition Specialists who have been on our Alaska expedition. They are full members of the Lindblad Expeditions team—students of the natural world and born explorers, not trained call center telemarketers.

SO WHY NOT TAKE ADVANTAGE OF THEIR EXPERTISE? Don't hesitate to call with your questions—they're equipped to provide answers based on their knowledge and personal experience.

Ask them about Alaska, how we explore there, our ships, our itineraries, and more. We think you'll find the conversation rewarding.



You can feel confident speaking with our Expedition Specialists. Many of them have explored Alaska aboard our ships, and can provide you with answers based on knowledge and personal experience.

CATEGORY 1: Main Deck #300-305 — Conveniently positioned between the dining room & lounge, these cabins feature two single lower beds, a writing desk and a large view window.

CATEGORY 2: Bridge Deck #100-104; Upper Deck #200-212, 215 — These well-located cabins include two lower single beds & a view window.

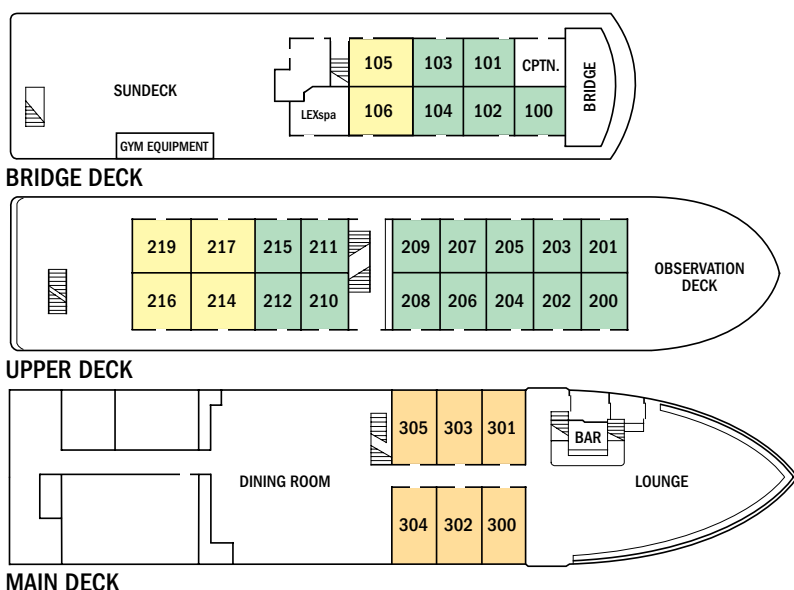
CATEGORY 3: Bridge Deck #105, 106; Upper Deck #214, 216, 217, 219 — These cabins feature a seating unit with table and two large view windows. Upper Deck cabins include two lower single beds which can convert to a double bed and a pull-out single bed for a third person; Bridge Deck cabins include two lower single beds only.

NOTE: Sole Occupancy cabins are available in Categories 1 and 2 only. Third person rates are available in certain categories at one half the double occupancy rate.

SHARED ACCOMMODATIONS: Shares can be arranged at the double occupancy rate in Categories 1 and 2 only.



From top: The dining room with its unassigned seating makes for easy mingling; A comfortable Category 2 cabin; Twin beds can be pushed together to form a double bed in Category 3 cabins on the Upper Deck.



Prices are per person, double occupancy unless indicated as solo.

ITINERARY	YEAR	CAT. 1	CAT. 2	CAT. 3	CAT. 1 SOLO	CAT. 2 SOLO	ADVANCE PAYMENT	NOTE
Exploring Alaska's Coastal Wilderness - Page 20	2015	\$6,290	\$7,340	\$8,390	\$9,440	\$11,010	\$750	Sample Airfares: Seattle/Juneau/Sitka/Seattle or vice versa: Economy from \$570; Business Class from \$990.
A Remarkable Journey to Alaska, British Columbia & Haida Gwaii - Page 22	2015	\$10,390	\$11,860	\$13,830	\$15,590	\$17,790	\$900	Sample Airfares: Seattle/Sitka: Economy from \$280; Business Class from \$600.

The Lindblad Expeditions- National Geographic difference

✓ **Large & Experienced Expedition Team**

One naturalist for every 10 guests ensures dedicated access and attention, plus a wide range of expertise among our naturalists.

✓ **Fleet of Expedition Landing Craft & Kayaks**

Five expedition landing craft, plus 12 tandem and eight single kayaks.

✓ **Cool Exploration Tools**

Underwater cameras, plus a hydrophone, to hear whale vocalizations.

✓ **Lindblad-National Geographic certified photo instructors**

On every departure—a naturalist trained to help shoot excellent photos.

✓ **Expedition Ship**

Our ship's bow allows every guest a prime spot for wildlife watching.

✓ **Flexibility & Choice**

A hallmark of our expeditions, there are always a variety of options on outings.

✓ **Casual Clothes & Attitude**

Casual defines our style. Unassigned seating at dinner makes mingling easy.

✓ **Video Chronicler Aboard**

To record your unique expedition experience.

✓ **Commitment to Conservation**

Through the Lindblad Expeditions-National Geographic Fund, together with our guests, we've contributed \$690,000 directly to conservation and research.

✓ **Alaska Whale Foundation Aboard**

Researchers from the AWF come aboard to provide the latest in fascinating hump-back research.

✓ **Undersea Alaska**

Our undersea specialist dives on each voyage and captures video to reveal Alaska's seldom-seen life beneath the sea.

✓ **Wellness Specialist Aboard**

Enjoy wellness treatments, massages and morning stretching.

✓ **Special Access**

Explore pristine areas by specially arranged permits.

Inclusive Pricing

Just about everything you have the opportunity to do aboard and ashore is included in the cost of your expedition. The value of what we include, combined with the quality of our service and the excellence of our expedition staff adds up to considerable value. The only things not included are those of a personal nature, or that interest a limited number of people—alcohol, Internet usage, tips to our crew, wellness treatments, and other specialized arrangements.

ABOARD SHIP

- ✓ All meals and nonalcoholic beverages
- ✓ 24-hour coffee, tea & soda on demand
- ✓ Hors d'oeuvres & snacks during nightly Recap
- ✓ Environmentally-friendly refillable water bottle
- ✓ Morning stretch classes with wellness specialist
- ✓ Fitness equipment
- ✓ Access to reference books and board games in the library
- ✓ The guidance and company of our expedition staff

ASHORE

- ✓ Special access permits, park fees, port taxes
- ✓ Transfers to and from group flights
- ✓ The expertise of our expedition staff

ACTIVITIES

- ✓ Expedition landing craft explorations
- ✓ Kayaking
- ✓ Presentations & photo instruction, including a special Alaska Whale Foundation presentation



Brown bear.

Reservation Information

Costs Include: All accommodations aboard ships or in hotels per itinerary or similar, all meals and nonalcoholic beverages aboard ship, meals on land as indicated, air transportation where indicated as included, shore excursions, sightseeing and entrance fees, use of kayaks (where available), special access permits, transfers to and from group flights, use of snorkeling equipment and wet suits, tips (except to ship's crew), taxes and service charges, services of a ship physician on most voyages, and services of our expedition staff.

Not Included: Air transportation (except where shown as included), extensions, passport, visa, immigration fees, meals not indicated, travel protection plan, items of a personal nature such as alcoholic beverages, e-mail, voyage DVD, laundry. Gratuities to ship's crew are at your discretion.

Airfare: For all programs, airfare is an additional cost unless otherwise indicated. Sample airfares are subject to change. We will gladly assist in making your air arrangements for a \$50 per person service fee.

Complimentary Airfare: On voyages with complimentary air offers, complimentary airfare is subject to availability at the time of booking, and is based on economy group flights that must be ticketed by Lindblad Expeditions. In the event complimentary flights are unavailable at time of booking, we reserve the right to issue an air credit. These offers are valid for new bookings only, and may not be combined with other offers. Please call for details.

TERMS & CONDITIONS

Reservations: To reserve your place, an advance payment is required at the time of reservation. The per person advance payment amount varies by program, and is outlined in our brochures, as well as on our website. Payment is accepted by Visa, MasterCard, American Express, Discover, or by check. Receipt of your initial payment indicates your acceptance of our complete Terms and Conditions. We require written notice at the time of reservation for any physical condition, diet, or treatment requiring special attention. Once your reservation is confirmed, we urge you to use your personalized online account for important information to help you prepare for your voyage. Managing your documents online will facilitate fast and accurate communication, and allow you to provide us with pertinent details we require, in order to complete your reservation. Your online account gives you access to your Expedition Guide, which includes valuable information specific to your voyage. You can also use your online account to make easy payments, view recommended flights and reading material, packing list, and so much more.

Final Payment: For expeditions of eight nights or less, final payment is due 90 days prior to departure. For expeditions of nine nights or more, final payment is due 90 days prior to departure.

Travel Protection Plan: We strongly recommend that you take advantage of our Travel Protection Plan. This plan offers comprehensive coverage to protect you from cancellation fees, costs incurred due to trip delays/interruption, and damaged or lost baggage, and provides medical assistance and evacuation during your travels. Our Travel Protection Plan is available for U.S. and Canadian residents only, and may be purchased any time prior to final payment due date. Travel Protection premiums are non-refundable once plan is purchased.

Smoking Policy: Smoking is allowed only in designated outdoor areas.

Responsibility and Other Terms & Conditions: Among other things, limitations of Lindblad Expeditions' and the National Geographic Society's liability for loss of property, injury, illness or death during the voyage will be provided to all guests on the ship's ticket sent prior to departure, and are also available on our website at www.expeditions.com/terms, or upon request. By registering for a trip, the guest agrees to all such terms and conditions.

Note: Itineraries and prices listed in this brochure are as of publication date, and are subject to change. The company reserves the right to impose surcharges based on increases in the company's actual cost of fuel or other unexpected expenses.

CANCELLATION POLICY	
For 2015 Expeditions	
Number of Days Prior to Expedition Start	Per Person Cancellation Fee
120 or more days	\$350*
119-90 days	Advance payment cost
89-60 days	25% of total fare
59-45 days	50% of total fare
44-0 days	No refund
*350 will be refunded in the form of a Lindblad Expeditions Travel Certificate.	
<i>This cancellation policy applies to expeditions as well as pre- or post- extensions with the exception of Denali. The effective date of a cancellation will be the date on which your cancellation notice is received. Any revisions you make within the cancellation penalty period, such as departure date or choice of voyage, are subject to cancellation fees.</i>	
<i>Note: Airline cancellation policies vary by carrier, as well as the type of fare used to issue your ticket.</i>	
<i>Cancellation policy for certain longer voyages and Holiday departures may vary due to high demand for these voyages. Our group cancellation policy is listed in the Terms and Conditions section of our website, or you may call us for details. We stress the importance of purchasing a travel protection plan to protect yourself from fees in the event you need to cancel your reservation.</i>	
For Denali Extension	
\$550 deposit is due at time of booking the extension. Additional 60% of total cost is due on various dates, based on the departure date of your voyage. Final payment is due 90 days prior to departure.	
Number of Days Prior to Expedition Start	Per Person Cancellation Fee
120 or more days	\$550
119-90 days	60% Denali cost
89-0 days	100% of Denali cost

Photo Credits: All Canada Photos/Alamy, Linda Burback, Marc Cappelletti, Stewart Cohen, Alexandra C. Daley-Clark, Alberto Montaudon Ferrer, Jeff Foott, Sharon Grainger, Dave Heath/Canada Tourism Commission Justin Hofman, Ralph Lee Hopkins, Sonia Jukam, Sven-Olof Lindblad, Michael Melford, Flip Nicklin, Niebrugge Images/Alamy, Michael S. Nolan, Dan Parrett/AlaskaStock, Gretchen Pederson, Marco Ricca, Fred Sharpe, Rick Smith/Grizzly Creek Films, Susan Seubert, Paul Souders/WorldFoto, Rikki Swenson, David Vargas

JOIN OUR EXPEDITION COMMUNITY ONLINE



Lindblad Expeditions, as an Active Member of the United States Tour Operators Association ("USTOA"), is required to post \$1 Million with USTOA to be used to reimburse, in accordance with the terms and conditions of the USTOA Travelers Assistance Program, the advance payments of Lindblad Expeditions customers in the unlikely event of Lindblad Expeditions bankruptcy, insolvency or cessation of business. Complete details of the USTOA Travelers Assistance Program may be obtained by writing to USTOA at 275 Madison Avenue, Suite 2014, NY, NY 10016, or by e-mail to information@ustoa.com or by visiting their website at www.USTOA.com.

We are proud to be a Founding Member of Adventure Collection – a family of the world's most trusted and experienced active travel companies. Each member company of Adventure Collection is dedicated to enriching the lives of its guests and to giving back to the areas in which it travels. For more information visit www.AdventureCollection.com.

©2015 Lindblad Expeditions

Lindblad Expeditions and the Eye are the trademarks of Lindblad Expeditions. All rights reserved. Lindblad Expeditions is an equal opportunity employer and provider. NATIONAL GEOGRAPHIC and the Yellow Border are the trademarks of the National Geographic Society. All rights reserved.

For Reservations: Contact your travel agent or Lindblad Expeditions

**1.800.EXPEDITION
(1.800.397.3348)**

Reservation Hours:

Monday – Friday 9am – 8pm ET

Saturday & Sunday 10am – 5pm ET

Lindblad Expeditions, Inc.

96 Morton Street, New York, NY 10014

Phone: 212.261.9000

Fax: 212.265.3770

email: explore@expeditions.com

For additional information and

online reservations, visit us on the

Web: www.expeditions.com

FREE AIRFARE

For complimentary airfare on select May and June 2015 departures, simply book by Mar. 31, 2015. Details inside.

SELECTED HONORS AND AWARDS

- » Condé Nast Traveler's Readers' Choice Award—Top Small Ship Cruise Lines, 2014
- » Condé Nast Traveler's 2014 Readers' Poll—Top 20 Small Cruise Ships in the World, 2014
- » Condé Nast Traveler World Savers "Doing it All" Award, 2013
- » Condé Nast Traveler Readers' Choice Award—Top 25 Cruise Lines, 2013
- » Condé Nast Traveler "Gold List", 2013, 2009, 2008, 2007, 2006, 2005
- » Virtuoso "Sustainable Tourism Leadership-Supplier" Award, 2013
- » Travel + Leisure "World's Best" Award for Small-Ship Cruise Lines, 2013, 2012, 2011, 2010, 2009, 2008
- » Travel + Leisure "World's Best for Families" Award for Small-Ship Cruise Lines, 2012, 2011, 2010, 2009
- » Cruise Critic Editor's Pick Awards "Best for Adventure," 2013, 2012, 2011, 2010
- » Climate Champion Award to Sven Lindblad by Clean Air-Cool Planet, 2009
- » Conservation Achievement Award for Corporate Achievement from National Wildlife Federation, 2008
- » Tourism for Tomorrow "Global Tourism Business Award," 2007

» GO TO WWW.EXPEDITIONS.COM/AWARDS FOR AN EXTENDED LIST.

1.800.EXPEDITION | WWW.EXPEDITIONS.COM

AKC-015

 Printed on 10% recycled content paper with soy-based inks. We recommend that you pass this along for others to enjoy or recycle.

EXPEDITION CODE: **2AKCFUB5**

