

# COSTA RICA AND THE PANAMA CANAL

**NEW!**  
CARIBBEAN TO  
CLOUD FOREST  
ITINERARY

**PLUS**  
PRISTINE WILDNESS &  
A UNIQUE CANAL TRANSIT

**WITH**  
COMPLIMENTARY 2-NIGHT  
STAY IN PANAMA & AIR CREDIT  
SELECT DEPARTURES

ABOARD THE NEWLY RESTYLED & RENOVATED  
NATIONAL GEOGRAPHIC SEA LION | 2015-16



Lindblad  
Expeditions



NATIONAL  
GEOGRAPHIC™



**As astonishing as the photos in National Geographic.**

**And an exhilarating life adventure:**

## **A Lindblad-National Geographic Expedition**



**Lindblad  
Expeditions**



**NATIONAL  
GEOGRAPHIC™**

Lindblad Expeditions and National Geographic have joined forces to further inspire the world through expedition travel. Our collaboration in exploration, research, technology and conservation will provide extraordinary travel experiences and disseminate geographic knowledge around the globe.

**VOYAGE EXCLUSIVE:** Voyage Exclusive: The Panama Canal Centennial has begun. We celebrate by extending an invitation to you: Be our guest on select departures for a two-day stay in Panama City to see the new Canal before it's flooded!

Find details on pages 6 and 24.



## Dear Traveler,

The Panama Canal, still celebrating its 100th birthday, will have a new milestone to celebrate next year—the completion of the Panama Canal Expansion project. These new locks will allow much larger ships, capable of carrying up to twice as much cargo, to transit the isthmus.

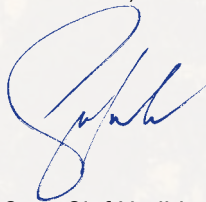
Our 2015/16 expeditions are perfectly timed to see the Canal construction project before the site, and the locks, are flooded forever. To that end we've created a special opportunity—two extra days in Panama City, our compliments. We'll not only visit the new Canal Expansion Observation Center for a look at the construction site, but also explore the much-lauded, new Frank Gehry-designed Biodiversity Museum.

Transiting the Panama Canal is a once-in-a-lifetime experience. And our voyage is unique—we spend two days in the Canal Zone, and make a call at the Smithsonian Biological Research Institute on Barro Colorado Island where we are joined by Smithsonian staff who reveal the facets of the island. When combined with exploring spectacular stretches of Costa Rica and Panama, the experience becomes far richer. Snorkel, swim, kayak along the shores of wild islands, and venture up rain forest canopied rivers in expedition landing craft. Share the adventure with top experts—naturalists, biologists, photographers—to help you see, do, and learn. And benefit from the onboard Lindblad-National Geographic certified photo instructor who'll help you capture it all in your best photos ever.

And this year we're delighted to add one more opportunity, which may be considered independently or in conjunction with our ship-based expedition: a new, land-based journey that takes you all the way to the Caribbean side of Costa Rica (pg. 18). We'll take small aircraft to explore the car-free town of Tortuguero, with its airstrip and roads carved from the jungle. We'll tour its canals on small boats searching for wildlife, and we've made arrangements to kayak as well. Whereas many visitors stay in lodges with rows of connected rooms, we have secured a prime location with private bungalows.

Whatever you choose, you'll find it satisfyingly comprehensive, and well-curated by our smart, engaging staff. I hope you're inspired to join us soon.

All the best,



Sven-Olof Lindblad





**TORTUGUERO**

Explore a remote, car-free town and venture deep into the surrounding rain forest via jungle-canopied canals.

**ARENAL**

Take in a view of the country's youngest volcano, walk suspension bridges, enjoy thermal hot springs and the family-owned, boutique-style lodge we've reserved.

**MONTEVERDE CLOUD FOREST**

Add an inland exploration to your coastal expedition. See butterflies, hummingbirds and walk the jungle reserve.

**COSTA RICA**

**MANUEL ANTONIO**

One of Costa Rica's most famous beaches, first charted by Ponce de León. Approach by expedition landing craft for a magical encounter where the jungle meets the sea.

**OSA PENINSULA**

*National Geographic* calls it "one of the most biologically intense places on Earth." Land on the beach of the largest, most remote jungle in Costa Rica.

**GOLFO DULCE**

Explore a lush private garden tended by expats we've known for decades—see splendid tropical blooms, plus macaws, toucans, and other colorful birds. We provision the ship in this area—obtaining fresh, handline-caught fish.

**ISLA COIBA**

Snorkel at an isolated marine preserve. Explore this remote island national park and UNESCO World Heritage site.



# SEE RARE, ELUSIVE WILDNESS YOU WOULD OTHERWISE MISS

## BARRO COLORADO ISLAND

By special arrangement, visit the Smithsonian Tropical Research Institute, and hike where some of the world's most important tropical research takes place.

## PANAMA

## PANAMA CANAL

Cross over two dramatic days for an unhurried look at Gatún Lake and the Canal Zone.

## GULF OF PANAMA ISLETS

Visit clear blue waters to explore hidden beaches and coves on otherwise-inaccessible islands—once host to pearl divers and pirates.

*Guests exploring by expedition landing craft.*



**“This is one of the great works of the world. It is a greater work than you yourselves at the moment realize.”**

- THEODORE ROOSEVELT, ADDRESSING THE CANAL WORKERS





# A MOST EXTRAORDINARY PANAMA CANAL TRANSIT

Our Canal transit is different. We cross over two days, allowing us to typically see the workings of the locks by day—and also dramatically lit by night, an experience often cited by guests as a highlight of their expedition.



Since we overnight in the Canal Zone on the lushly fringed Gatún Lake, we have the opportunity, by special arrangement, to visit Barro Colorado Island, site of the Smithsonian Tropical Research Institute that has been in continuous operation since 1923. Explore the island on foot or by expedition landing craft. See its extraordinary wildlife, and we'll hike where research is being conducted by some of the world's top tropical scientists.



*Left: The Panama Canal was built from 1904 to 1914 after a French attempt that began in 1881 and was abandoned in 1889. Top: Guests observe the dramatically lit Canal by night. Bottom: Barro Colorado Island, where we visit the Smithsonian Tropical Research Institute and learn more about the National Geographic-funded projects to study the island's species.*



# BE OUR GUEST IN PANAMA CITY

Overnight and enjoy a two-day stay in **Panama City** where we've made arrangements for you to visit the **Canal Expansion Observation Center** as well as the new, **Frank Gehry-designed, Museum of Biodiversity**. Extend your adventure with our compliments on select departures.

» [SEE PAGE 24 FOR DETAILS.](#)

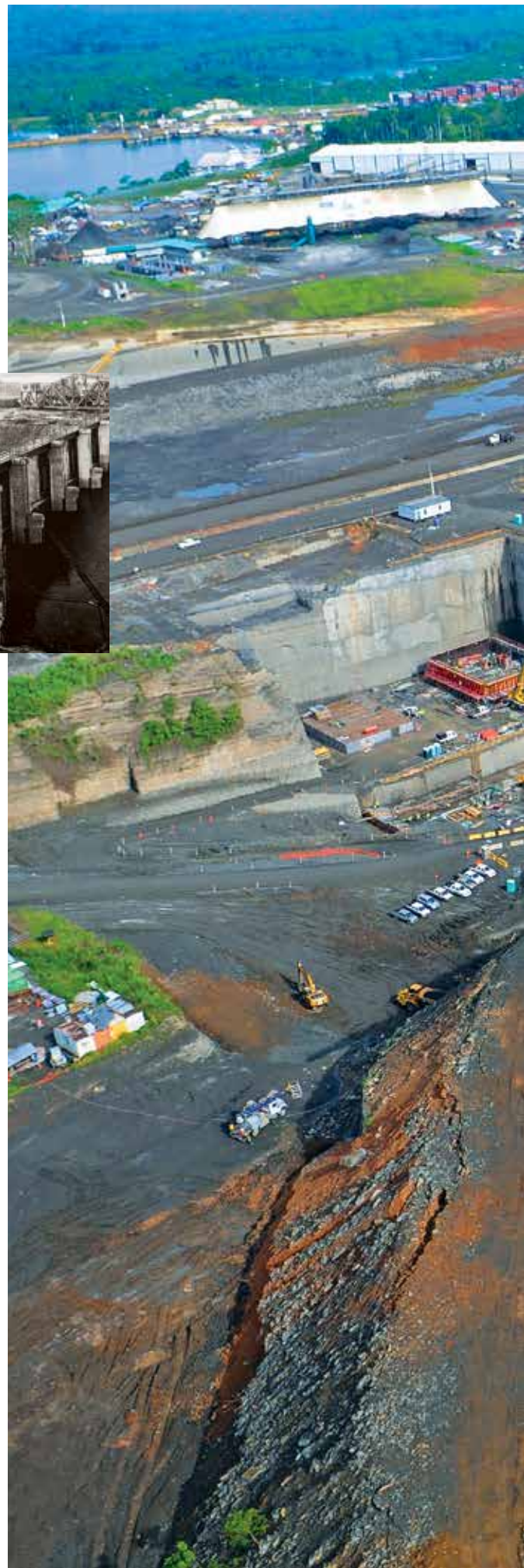


## MUSEUM OF BIODIVERSITY

A Frank Gehry-designed spectacle of steel and concrete, the newly opened BioMuseo is a tribute to the history of the isthmus and its wildlife. Ambitious in scope, its 43,000 square feet tell the story of the region's iconic wildlife. Visit it on a special tour curated and led by our top staff.



*Clockwise from top left: Archival images from the Canal's original construction; aerial shot of the new Expansion Observation Center; the Frank Gehry-designed BioMuseo.*







# PANAMA CANAL: HISTORIC & MODERN

The Panama Canal changed the way the world traveled and moved goods. Now, nearly 100 years after opening, it is changing again. A mammoth new construction project is underway: new locks, seventy feet wider, are being built at both ends of the Canal. These new locks will again change the face of global commerce by allowing a much greater volume of goods to cross.









*Clockwise from left: A mantled howler monkey foraging with its young; cool off in a waterfall or enjoy some kayaking opportunities; a scarlet macaw shows off.*

## GO DEEPER INTO BIODIVERSITY

Experience the authentic wildness of Costa Rica & Panama by exploring up close and in depth—only possible when you go by expedition ship. You'll be able to venture to tiny, idyllic islands in the Gulf of Panama that are free from tourist infrastructure and only reachable by our expedition landing craft. Cool off in the pool of a secluded waterfall as a reward after a hike in the jungle. Call at a private reserve we've visited for nearly 30 years that's home to toucans, macaws, and hundreds of orchid species. Explore a jungle shoreline by kayak, snorkel a vibrant undersea garden, cruise up winding, jungle-canopied creeks in our expedition landing craft. Or choose the optional opportunity for a beach horseback ride.











# JOY OF COSTA RICA & PANAMA EXPEDITION-STYLE

You'll discover that life aboard our newly renovated 62-guest expedition ship is warm and welcoming. Refreshed cabins feature all new furnishings, windows, lighting, and more. Walls glow with vivid new photographs of wildlife and scenic vistas. And the lounge, handsomely re-designed and re-configured, graciously accommodates our nightly Recap—a convivial gathering of the expedition community to revisit the day's events and swap stories over hors d'oeuvres and cocktails. And meals are now doubly rewarding in our newly appointed dining room. Our CEO, Sven

Lindblad, who spent his formative years in Africa working as a guide with a high-end safari operator, consistently quotes his mentor: "Only a fool has to suffer in the bush." That's why our hotel staff and chefs are integral to every expedition—as important to the happiness aboard as the expedition leader and the captain. Their ability to respond flexibly keeps our vital expedition-

ary spirit fed, so to speak. You can eagerly rush to the deck for a spontaneous dinner hour dolphin sighting, without fear that it's wreaking havoc in the kitchen. Dinner will still be superb. Like the ship's connectedness to the outdoors, each meal is a window of sorts, reflecting local, sustainable cuisine whenever possible, including fresh fish and superb Costa Rican coffee. Breakfast, lunch, and dinner aboard earn rave reviews from guests.



*Clockwise from top left: Category 3 cabin freshly redesigned; guests take advantage of the opportunities to snorkel and kayak; our chef crafts culinary delights using locally sourced products; explore via expedition landing craft.*



# EXPEDITION PHOTOGRAPHY

## OUR EXCLUSIVE PROGRAM

Unique in the world of travel, our Expedition Photography program offers guests of every skill and interest level unrivaled photography opportunities—including a Lindblad-National Geographic certified photo instructor on board every expedition. Photo enthusiasts, from beginner to semi-pro, can stand side-by-side with accomplished photographers and pick up tips in an extraordinary field environment. Their expertise will inspire you and help you improve your skills—so you can return home with greater confidence and a complete photo record of your experience of a lifetime.



### THE TOP EXPEDITION TEAM

Learn, see, and do more by exploring with the experts who know the region best. Your team consists of an expedition leader and four naturalists, including a Lindblad-National Geographic certified photo instructor to provide in-the-field instruction. Additionally—a wellness specialist who leads aerobic hikes and morning stretch class, and a video chronicler who films the story of your adventure are on every expedition.





# NATIONAL GEOGRAPHIC

## TRAVEL WITH NATIONAL GEOGRAPHIC PHOTOGRAPHERS

Choose a select departure and learn from these top National Geographic Photographers

### KIKE CALVO

DEC. 12, 2015

Award-winning photographer and expert on Latin America. Kike (short for Enrique) has published several National Geographic books.



### JEFF MAURITZEN

JAN. 9, 2016

A National Geographic naturalist and photographer who has covered over 50 countries for a wide variety of publications.



### SUSAN SEUBERT

FEB. 13, 2016

An award-winning travel and editorial photographer, Susan has shot more than 20 features for *National Geographic Traveler*.



### MICHAEL MELFORD

MAR. 12, 2016

A National Geographic Society photographer for over 25 years, Michael has produced eight books and shot stories in wild places all over the world.





# EXTEND YOUR NATIONAL GEOGRAPHIC SEA LION EXPEDITION

## ADD MONTEVERDE CLOUD FOREST

Discover a mist-shrouded mountain covered in towering trees draped in a profusion of bromeliads and orchids. Low, cool clouds halo the hillside feeding the abundance of plant life, home to scores of bird species, including the resplendent quetzal and the solitary with its haunting call. » [SEE PAGE 20.](#)



Keel-billed Toucan.

## ADD MONTEVERDE, ARENAL VOLCANO & TORTUGUERO

Cross a vast alpine lake and hike the mountainside of an active volcano that looms over its surroundings, its geothermal activity evident in the natural hot springs that abound. Walk suspension bridges strung in towering trees for a bird's-eye view of the rain forest, and discover the rarified high-mountain cloud forest. Plus, venture to the low-lying Caribbean coast, its narrow canals best explored by small boat for views of spectacled caiman, several monkey species, Amazon kingfishers, green macaws, green ibis and so much more. » [SEE PAGE 21.](#)



Arenal Volcano.



Howler monkey moves through a tree in Tortuguero National Park, Costa Rica.



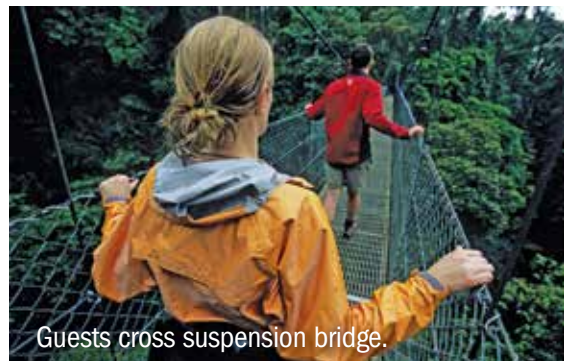


Boats traveling through the Tortuguero National Park.

## OR CHOOSE A LAND-ONLY ADVENTURE

Discover the diversity of Costa Rica's wild interior plus the captivating Caribbean coast—all by land. Only one itinerary offers the opportunity to experience three unique Costa Rica biomes without setting foot aboard a ship: Exploring Costa Rica: Cloud Forest to the Caribbean.

You'll find Costa Rica's interior is dense with wild terrain: cloud forests, smoldering volcanoes; and the verdant low-lying Caribbean coastal regions teems with life. Explore forests where thriving vegetation provides habitat for unique birdlife; hike a series of suspension bridges hung in towering trees planted in the shadow of a volcano; stroll the streets of a car-free town carved from the coastal jungle; and board small, local craft to venture into narrow canals to see and photograph coastal wildlife from water level. [» SEE PAGE 18.](#)



Guests cross suspension bridge.



# COSTA RICA AND THE PANAMA CANAL

8 DAYS/7 NIGHTS—ABOARD *NATIONAL GEOGRAPHIC SEA LION*

PRICES FROM: \$6,190 to \$10,490 (See page 23 for complete prices.)

Immerse yourself in natural wonders along the Pacific coast of Costa Rica and Panama on a voyage aboard the *National Geographic Sea Lion*. Venture into the forests of Manuel Antonio and Corcovado National Parks; search for monkeys, frogs, sloths and brightly colored birds; and take an optional horseback ride on a pristine beach. Cap off your voyage with a crossing of the legendary Panama Canal.

## EXPEDITION HIGHLIGHTS

- ▶ Discover hidden pools and waterfalls deep within the jungles of the Osa Peninsula.
- ▶ Explore the tiny islands of the Gulf of Panama and snorkel off Isla Coiba.
- ▶ Enjoy special access to the protected forests of Barro Colorado Island.
- ▶ Examine the fascinating lock system that made the Panama Canal one of the greatest engineering achievements of its era.

## EXPERIENCE & EXPERTISE



Every expedition sails with a veteran expedition leader and a handpicked team of four local naturalists including a Lindblad-National Geographic certified photo instructor. Each naturalist is deeply knowledgeable about Costa Rica and Panama and dedicated to sharing their passion for the region with you. Other key members of the expedition team include a wellness specialist, and a video chronicler. National Geographic experts are on select departures.

*Visit our website to read staff and guest speaker bios for this expedition.*



*An adult and juvenile brown capuchin monkey.*



## DAY 1: U.S./SAN JOSÉ, COSTA RICA/ HERRADURA

Upon arrival in San José, transfer by land to Herradura and embark our ship *National Geographic Sea Lion*. (D)

## DAY 2: MANUEL ANTONIO NATIONAL PARK

Spend the morning in Manuel Antonio National Park where thick forests fringe white-sand beaches. Watch for three-toed sloths lazing among the branches, and spot monkeys and vividly colored birds. This afternoon take a refreshing swim before heading south along the beautiful Pacific coastline. (B,L,D)



## DAY 3: OSA PENINSULA

Anchor off the Osa Peninsula to see some of the most pristine lowland rain forest on the Pacific coast. In the environs of Corcovado National Park, swim in waterfall pools, optional horseback riding on the beach, or trek through the rain forest for a chance to see four species of monkeys—howler, spider, capuchin, and squirrel. (B,L,D)

## DAY 4: GOLFO DULCE

Enter the mangrove-fringed Golfo Dulce along the southwestern edge of Costa Rica. Visit Casa Orquídeas, a tropical paradise of ornamental palms, bromeliads, heliconias, and orchids, closed to the general public and reached by boat only. Keep your eye out for tanagers, parrots, and toucans. Later, explore the placid bay, ideal for kayaking, expedition landing craft rides and swimming. (B,L,D)

## DAY 5: COIBA NATIONAL PARK, PANAMA

We make our first stop in Panama this morning at the remote Isla Coiba, one of the many islands of Coiba National Park, a UNESCO World Heritage site. Once a penal colony, the island has long been protected and accessible by special permit only. Among



its many endemic species are the Coiba Island agouti and the mantled howler monkey, as well as four varieties of sea turtle. Discover rich marine life while snorkeling, go kayaking or hiking, or relax on the beach. (B,L,D)

## DAY 6: GULF OF PANAMA ISLETS/PANAMA CANAL TRANSIT

Today, explore the tiny islets of the Gulf of Panama by expedition landing craft. Here we might spot frigatebirds, brown pelicans, neotropic cormorants, and brown boobies. Set sail for the Panama Canal this afternoon. Stretching more than 50 miles, the canal was a colossal engineering feat completed in 1914. It is still traversed by some 14,000 ships every year. As cargo ships tend to pass through the canal during the day, we'll most likely begin our crossing at night, when the canal is dramatically lit. (B,L,D)

## DAY 7: GATÚN LAKE/PANAMA CANAL TRANSIT

Board our expedition landing craft to visit Barro Colorado Nature Monument in Gatún Lake by special arrangement. Scientists have worked at the Smithsonian Tropical Research Institute on Barro Colorado Island since 1923, researching its 120 mammals and diverse tree species. It is also the site of a National Geographic-supported project that tracks tagged animals using automated radio signals and wireless technology. Join local guides for a walk through the forests. This evening, continue through the complex lock system of the canal. (B,L,D)

## DAY 8: COLÓN/PANAMA CITY/U.S.

After breakfast, disembark in Colón and transfer to the airport in Panama City for your flight home. (B)

## EXPEDITION DETAILS

**DATES:** 2015 Nov. 28; Dec. 5\*, 12 📷, 19\*  
2016 Jan. 2\*, 9 📷, 16\*, 23, 30\*;  
Feb. 6, 13\* 📷, 20, 27\*; Mar. 5, 12\* 📷

📷 Photo Expeditions: departures are for passionate photographers with hands-on instruction from our Photo Expedition Team.

\*These departures travel from Panama City to San José.

## SPECIAL OFFER:

### Panama Pre- or Post-Extension

Book now and receive an extra night and day in **Panama City** on select 2015/16 departures. See the Panama Canal Expansion Project Observation Center, tour the UNESCO World Heritage site of Casco Viejo, plus explore the Frank Gehry-designed BioMuseo. Also, book the Nov. 28 or Dec 12, 2015 departures and receive a \$500 air credit. New Bookings only. See page 24 or call for details.

## OPTIONAL EXTENSIONS

Add a three-day pre-extension to the **Monteverde Cloud Forest** or the new seven-day post-extension to **Monteverde, Arenal Volcano & Tortuguero**. Extensions available on select dates. See pages 20-21 for details.



## NATIONAL GEOGRAPHIC PHOTOGRAPHERS:

Travel with **Kike Calvo** on Dec. 12, 2015; **Jeff Mauritzen** Jan. 9, 2016; **Susan Seubert** Feb. 13, 2016; **Michael Melford** Mar. 12, 2016.



**NEW LAND-ONLY!**

# **EXPLORING COSTA RICA: FROM CLOUD FOREST TO THE CARIBBEAN**

**9 DAYS/8 NIGHTS**

2015/16: \$4,290 pp double occupancy and \$4,790 single occupancy.

Discover the breadth of biodiversity of wild Costa Rica on a land-based expedition through forests, mountains, and the verdant Caribbean coast. Experience the varied landscapes, from a mist-shrouded forest, to an active volcano and the low-lying Caribbean canals—each biosphere with its unique wildlife. Fine lodges will serve as your base camp on a cohesive, curated journey.

## **EXPEDITION HIGHLIGHTS**

---

- ▶ Experience the mist-shrouded cloud forest on a naturalist-led hike through Monteverde Cloud Forest Reserve.
- ▶ Walk suspension bridges in the shadow of active Arenal Volcano, and then relax in springs warmed by volcanic activity.
- ▶ Visit the remote, car-free town of Tortuguero and venture into the rain forest via green-canopied canals.
- ▶ See a great variety of landscapes, wildlife, and biodiversity on a land-only expedition.



*A view of the Arenal Volcano.*



### DAY 1: HOME/SAN JOSÉ

Fly to the international airport in San José, Costa Rica and transfer to the Doubletree Cariari hotel by Hilton. Meet your naturalist guide and enjoy a welcome dinner at the hotel. (D)

### DAY 2: SAN JOSÉ/CARARA NATIONAL PARK/MONTEVERDE

After an early breakfast at the hotel transfer to Carara National Park, where the less dense rain forest makes for easy bird sightings. Enjoy lunch at a local restaurant before venturing to the nearby Bat Jungle exhibit or hearing from an early Quaker settler of Monteverde. We'll check into a family-owned retreat with expansive lawns and picturesque views of the cloud forest. (B,L,D)



*Hummingbird in flight.*

### DAY 3: MONTEVERDE

Begin the day at a butterfly farm where we'll have the opportunity to see dozens of local species in a short time. After lunch, we'll tour the Monteverde Cloud Forest Reserve and search for monkeys, hummingbirds and possibly the rare resplendent quetzal among other species. (B,L,D)

### DAY 4: MONTEVERDE/ARENAL

We'll enjoy breakfast at the hotel and then visit a family-owned, third generation coffee farm. A local guide will share the culture of coffee farming in Central America, and we'll have a chance to pick coffee cherries during a tour of the grounds. After the tour, drive to Lake Arenal and cross in small boats for

a fresh perspective on the volcano. Dine at a restaurant on the lake's far side before checking into an elegant hotel surrounded by gardens and pastures with grazing animals. Every room offers a panoramic view of the smoldering Arenal Volcano. (B,L,D)



*Arenal hanging bridges.*

### DAY 5: ARENAL VOLCANO

Walk the Arenal Hanging Bridges strung more than two miles through the rain forest canopy. In the evening, relax in thermal pools naturally heated by the volcano. (B,L,D)

### DAY 6: ARENAL/TORTUGUERO

Take a charter flight to Tortuguero, a spectacular lowland forest on Costa Rica's northeast coast. Check into a rustic lodge at the water's edge; tour the wildlife-rich canals of Tortuguero National Park in small guided boats, spot monkeys, caiman and myriad bird species. Enjoy dinner at the lodge. (B,L,D)

### DAY 7: TORTUGUERO

Set out by boat or kayak to explore more of Tortuguero National Park's canals. Enjoy the lodge's pool and optional spa before visiting the Sea Turtle Conservancy to learn of the area's history. Stroll through the car-less village before dinner in town. (B,L,D)

### DAY 8: TORTUGUERO/SAN JOSÉ

En route to San José we'll stop to visit Sibú Chocolatier, maker of some of the world's finest organic chocolate. Here we'll learn the Aztec & Mayan history of the cacao plant and enjoy a workshop on preparing chocolate. The day ends with a farewell dinner. (B,L,D)

### DAY 9: SAN JOSÉ/HOME

Transfer to the San José airport for flights home. (B)



## EXPEDITION DETAILS

**DATES:** 2015 Dec. 11, 25

2016 Jan. 8, 22; Feb. 5, 19; Mar. 4, 18



*Look out for capuchin monkeys.*



# COSTA RICA TO PANAMA PLUS MONTEVERDE CLOUD FOREST

11 DAYS/10 NIGHTS—ABOARD *NATIONAL GEOGRAPHIC SEA LION*

PRICES FROM: \$7,780 to \$12,280

(See page 23 for complete prices.)

DATES: 2015 Nov. 25; Dec. 9, 23 2016 Jan. 6, 20; Feb. 3, 17; Mar. 2

There is an aura about Monteverde's cloud forest—the mist drifting past silhouettes of majestic trees, the cool quiet and the haunting music of a bird called "Solitaire." The cloud forest is a secretive place, revealing its magic to the trained eye of our naturalists, who will help you observe all facets of this marvelous habitat. On our Costa Rica expeditions, you will have a ground-level experience by walking the forest trail and then head up into the canopy to take a Skywalk—a series of suspension bridges—for a bird's-eye view. Add Monteverde prior to your *National Geographic Sea Lion* sailing for an in-depth perspective.

## EXPEDITION HIGHLIGHTS

- ▶ Walk trails with butterflies and birds, and watch for the rare resplendent quetzal.
- ▶ Ascend a series of suspension bridges for a bird's-eye view of the forest canopy.
- ▶ Monteverde's cloud forest is sprinkled with moss, 300 species of orchids, and abundant wildlife.



Scarlet Macaw

### DAY 1: MIAMI/SAN JOSÉ, COSTA RICA

Depart Miami mid-morning on a non-stop flight to San Jose, Costa Rica. Upon arrival, a short drive brings us to the Doubletree Cariari Hotel. (D)

### DAYS 2 AND 3: MONTEVERDE CLOUD FOREST

A scenic drive of approximately five hours takes us to Monteverde Cloud Forest, an acclaimed private reserve. Bathed in cool, year-round moisture, the forest is covered with mosses and 300 species of orchids. Walk trails rich with butterflies and bird life. Ascend the Skywalk, a series of suspension bridges, for a bird's-eye view of the rain forest canopy. Learn about life in the early Monteverde community from Marvin Rockwell, one of the original Quaker homesteaders. We spend each night at a



Guests explore on the Skywalk in Monteverde.

charming, family-owned lodge. (B,L,D)

### DAY 4: MONTEVERDE/HERRADURA/ EMBARK

Visit a butterfly farm before transferring to Herradura to embark our ship. (B,L,D)

DAYS 4-11: FOLLOW "COSTA RICA & THE PANAMA CANAL" ITINERARY ON PAGES 16-17. (DAYS 4-10: B,L,D; DAY 11:B)



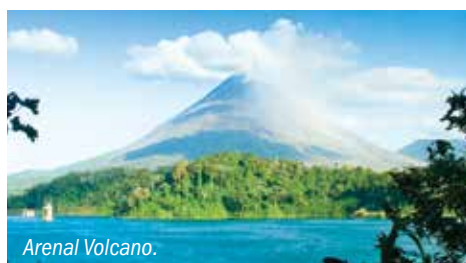
# PANAMA TO COSTA RICA PLUS MONTEVERDE, ARENAL VOLCANO & TORTUGUERO

15 DAYS/14 NIGHTS—ABOARD *NATIONAL GEOGRAPHIC SEA LION*

PRICES FROM: \$10,180 to \$14,980 (See page 23 for complete prices. )

DATES: 2015 Dec. 5, 19 2016 Jan. 2, 16, 30; Feb. 13, 27; Mar. 12

Cloud forests, volcanoes, and the sea: the ultimate allure of a Panama and Costa Rica expedition. This journey offers an amazing variety of experiences, including an in-depth transit of the Panama Canal; and time on land in Monteverde Cloud Forest and at Arenal Volcano. Explore the area aboard the versatile expedition ship *National Geographic Sea Lion*, go kayaking, use expedition landing craft, or try snorkeling. On this Central American expedition you get to explore the Pacific and Caribbean sides of Costa Rica for our most in-depth experience among the region's iconic wildlife and varied landscapes.



Arenal Volcano.

## EXPEDITION HIGHLIGHTS

- ▶ Cloud forests, volcanoes and the sea create the ultimate expedition combination.
- ▶ Search for monkeys, iguanas, endangered scarlet macaws, and American crocodiles.
- ▶ Venture up Tortuguero's narrow, rain forest-lined canals to search for monkeys, caiman, rare birds, and more on the Caribbean side of Costa Rica.



Kayaking in the canals of Tortuguero National Park.

DAYS 1-7 FOLLOW "COSTA RICA & THE PANAMA CANAL" ITINERARY IN REVERSE ON PAGE 17.

Note: Days 8-15 can be taken as a STAND-ALONE expedition. See page 18.

### DAY 8: HERRADURA/MONTEVERDE

Disembark the ship and transfer to Carara National Park to bird watch and then see the Bat Jungle exhibit or hear from an early Quaker settler. Stay at a peaceful retreat with expansive grounds and picturesque views. (B,L,D)

### DAY 9: MONTEVERDE

Visit a butterfly farm and tour the Monteverde reserve. (B,L,D)

### DAY 10: MONTEVERDE/ARENAL

Visit a third-generation coffee farm, and then sail across Lake Arenal. Later, check into an elegant hotel and relax in thermal pools heated by Arenal Volcano. (B,L,D)

### DAY 11: ARENAL

Walk the Arenal Hanging Bridges, strung through two miles of dense rain forest canopy, then experience the traditional sugar-making process. (B,L,D)

### DAY 12: ARENAL/TORTUGUERO

Take a charter flight to Tortuguero, a spectacular lowland forest on Costa Rica's northeast coast. Check into a rustic lodge at the water's edge; tour the wildlife-rich canals of Tortuguero National Park in small guided boats and spot monkeys, caiman and myriad bird species. Enjoy dinner at the lodge. (B,L,D)

### DAY 13: TORTUGUERO

Set out by boat or kayak to explore more of Tortuguero National Park's canals. Enjoy the lodge's pool and optional spa before visiting the Sea Turtle Conservancy to learn of the area's history. Stroll through the car-less village before dinner in town. (B,L,D)

### DAY 14: TORTUGUERO/SAN JOSÉ

Visit Sibú Chocolatier and enjoy a workshop on preparing chocolate. After lunch, drive to your hotel. The day ends with a farewell dinner. (B,L,D)

### DAY 15: SAN JOSÉ/U.S.

Transfer to the San José airport for flights home. (B)



# Top 10 Reasons to experience Costa Rica & Panama with Lindblad and National Geographic

**1. Experience Matters.** With 20+ years in the region, we have had more time than anyone to learn how to deliver the most extraordinary expedition possible. We also own and operate the *National Geographic Sea Lion*, giving us experience and ownership that other operators here just don't have. You'll feel the difference.

**2. More flexibility, choices, and opportunities to explore.** We've put our experience to use in scheduling swimming, snorkeling and walking/hiking excursions at our favorite sites, at the best time of day, with flexibility built-in for those magical wildlife moments you won't want to miss. Kayak or take expedition landing craft to otherwise unreachable spots.

**3. Explore the Hidden Gems.** Costa Rica and Panama offer wildness, enormous biodiversity, and beauty—but much of it is tucked away in secluded coasts or offshore in hard to reach locations. Approach beaches from the water, see a greater variety of natural wonders than any land-based excursion.

**4. Learn more from experienced naturalists.** How many times has a stellar guide made all the difference in your travels? We've hand-picked a team of them, a core group of Costa Rican and Panamanian naturalists (1 for every 12 guests) so that you'll learn more and make an incredible connection with these fascinating islands.



## **5. A Lindblad-National Geographic certified photo instructor on every departure.**

A specially trained naturalist, your photo instructor will provide assistance with your camera and instruction in elements of composition—to help you take

your best photos ever. Certain departures are dedicated Photo Expeditions, with National Geographic photographers aboard, for an in-depth photo experience.

**6. Unique Panama Canal Transit.** The Panama Canal is so much more than a series of locks, and we take in this engineering marvel over two days instead of one. We explore the Canal Zone and, by special arrangement with the Smithsonian Tropical Research Institute, are permitted to overnight in the middle of our Panama Canal transit to explore Barro Colorado Nature Monument.

## **7. Tools for exploration.**

Our fleet of 5 expedition landing craft, 8 single kayaks and 12 double kayaks allow us to explore remote locations that would be otherwise impossible to reach.

Video microscopes, hydrophones, and other tools give you the opportunity to have an unmatched, in-depth understanding and appreciation of all we'll discover.



**8. Wellness inspired by nature.** Our Wellness program, balances activities ashore and aboard. Our wellness specialist leads morning stretch class on the sundeck or on the beach. And complimenting the tonic of wildness, we offer massage therapy and body treatments in the LEXspa.

## **9. Seamless transition to a land-based exploration.**

Add an inland exploration of Costa Rica before or after your coastal expedition. Join our top tier expedition team in exploring Monteverde, Tortuguero, and Arenal.

## **10. Exclusive Video Chronicle of your expedition.**

A video chronicler aboard every voyage captures all the moments of your unique expedition. Professionally shot in HD and edited during the voyage, it's available for purchase at disembarkation.



# National Geographic Sea Lion

**CAPACITY:** 62 guests in 31 outside cabins.

**REGISTRY:** United States. **OVERALL LENGTH:** 152 feet.

**PUBLIC AREAS:** Our ship features a library; global market; lounge with full-service bar and facilities for films, slide shows, and presentations; Observation Deck; partially covered sundeck with chairs and tables, and LEXspa. Our “open bridge” provides guests an opportunity to meet our officers and captain and learn about navigation.

**MEALS:** Served in single seatings with unassigned tables for an informal atmosphere and easy mingling. Breakfast is a wide selection buffet and lunch is often served family style. Menu emphasizes local flair.

**CABINS:** All face outside with windows, private facilities, and climate controls.

**EXPEDITION EQUIPMENT:** Bow camera, hydrophone, kayaks, snorkeling gear, splash-cam, video microscope, and expedition landing craft.

**SPECIAL FEATURES:** Guest Internet access. A video chronicler and doctor on board all voyages in Costa Rica/Panama.

**WELLNESS:** The vessel is staffed by a wellness specialist and features exercise equipment, LEXspa, and outdoor stretching area.

**CATEGORY 1:** Main Deck #300-305—Conveniently positioned between the dining room & lounge, these cabins feature two single lower beds, a writing desk, and a large view window.

**CATEGORY 2:** Bridge Deck #100-104; Upper Deck #200-212, 215—These well-located cabins include two lower single beds & a view window.

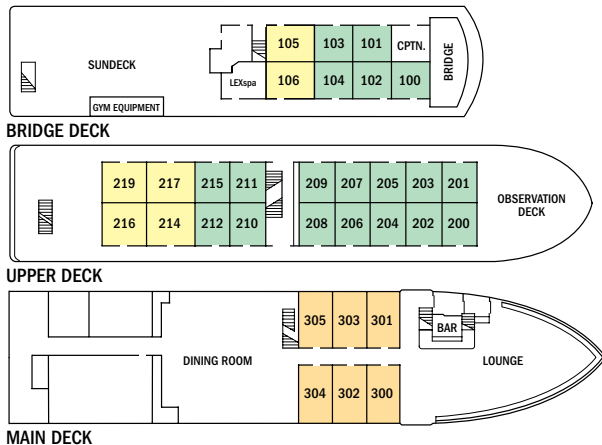
**CATEGORY 3:** Bridge Deck #105, 106; Upper Deck #214, 216, 217, 219—These cabins feature a seating unit with table and two large view windows. Upper Deck cabins include two lower single beds which can convert to a double bed and a pull-out single bed for a third person; Bridge Deck cabins include two lower single beds only.



*Insets clockwise from top: Expedition ship National Geographic Sea Lion can access hard to reach locations; twin beds can be pushed together to form a double bed in Category 2 cabins on the Upper Deck; a comfortable Category 3 cabin freshly redesigned.*

**NOTE:** Sole Occupancy cabins are available in Categories 1 and 2 only. Third person rates are available in certain categories at one half the double occupancy rate.

**SHARED ACCOMMODATIONS:** Shares can be arranged at the double occupancy rate in Categories 1 and 2 only.



**THE PRIVILEGE OF WILDNESS IN COMFORT AND STYLE**

The *NG Sea Lion* has been transformed: the lounge, bar and dining room have been handsomely renovated. And every cabin category has been refreshed with warm cherry veneer, our signature bed linens, sleekly framed photos and more. Now, the ship sets a new standard for expedition hospitality and comfort.

Prices are per person, double occupancy unless indicated as solo.

ITINERARY	YEAR	CAT. 1	CAT. 2	CAT. 3	CAT. 1 SOLO	CAT. 2 SOLO	ADVANCE PAYMENT	NOTE
Costa Rica & The Panama Canal	2015/16	\$6,190	\$6,990	\$7,920	\$9,290	\$10,490	\$750	Sample Airfares: Miami/Panama City, San José/Miami or vice versa: Economy from \$560; Business from \$880.
Monteverde + Costa Rica to Panama	2015/16	\$7,780	\$8,580	\$9,510	\$11,080	\$12,280	\$1,000	Sample Airfares: Miami/San José, Panama City/Miami Economy from: \$560; Business from \$880.
Panama to Costa Rica + Monteverde, Arenal & Tortuguero	2015/16	\$10,180	\$10,980	\$11,910	\$13,780	\$14,980	\$1,000	Sample Airfares: Miami/Panama City, San José/Miami: Economy from \$560; Business from \$880.



# Take advantage of our special offers

**COMPLIMENTARY PANAMA EXTENSION:** Book now for a complimentary Panama 2 Day/1 Night Pre- or Post- Extension on select 2015/2016 departures. On our popular Dec. 19 and 26, 2015 departures, pay \$450 per person double occupancy and \$520 for single occupancy for this extension. See the mega construction of the Post-Panamax-size locks at the new Panama Canal Expansion Project Observation Center. Tour the UNESCO World Heritage site of Casco Viejo, plus explore the BioMuseo (Museum of Biodiversity), designed by Frank Gehry. Also, book the Nov. 28 or Dec 12, 2015 departures and receive a \$500 air credit. New Bookings only. Call for full details.

**BRINGING THE KIDS:** We believe sharing an expedition with your kids or grandkids is a life-enhancing experience. So take \$500 off for each child under the age of 18.

## IT'S EVEN MORE FUN WITH FRIENDS

Save 5% when traveling as a group of 8 or more people. Take advantage of this great savings, while enjoying traveling with your friends and family. This savings is applicable on voyage fares only, and not on extensions or airfare. Deposit, final payments, and cancellation policies for group travel vary from our regular policies.

## OUR COMMITMENT TO CONSERVATION AND STEWARDSHIP IN CENTRAL AMERICA

A core value of Lindblad Expeditions-National Geographic (LEX-NG) is to positively impact the areas we explore. The LEX-NG Fund does this by supporting conservation, research, education, and community development projects in regions we visit. In Central America, our current grantee, MarViva Foundation, addresses ocean conservation priorities and the sustainable use of coastal and marine resources along the Eastern Tropical Pacific.



Together with our guests, we have donated nearly \$215,000 to MarViva. All funds go to local, community-based initiatives to support responsible fisheries. For more about this project or any of our global stewardship efforts, visit [expeditions.com/conservation](http://expeditions.com/conservation).



## What's Included

### ABOARD SHIP

- ✓ All meals and non-alcoholic beverages
- ✓ Cappuccinos, lattes & complimentary refillable water bottle
- ✓ 24-hour coffee, tea & soda on demand
- ✓ Hors d'oeuvres & snacks during lounge recap
- ✓ Fitness equipment with towels, water
- ✓ Fully stocked library
- ✓ The guidance and company of our expedition staff

### ASHORE

- ✓ Meals on land, as indicated in itinerary
- ✓ Sightseeing & entrance fees
- ✓ Special access permits, park fees, port taxes
- ✓ Transfers to and from group flights
- ✓ The expertise of our expedition staff

### ACTIVITIES

- ✓ All excursions
- ✓ Expedition landing craft & kayak explorations
- ✓ Snorkeling, masks, and fins where relevant
- ✓ Lectures & presentations in the lounge

» JOIN US ONLINE



EXPLORATIONS  
BLOG

YouTube

twitter

facebook



# Reservation Information

**Costs Include:** All accommodations aboard ship or in hotels per itinerary or similar, all meals and nonalcoholic beverages aboard ship, meals on land as indicated, air transportation where indicated as included, shore excursions, sightseeing and entrance fees, special access permits, transfers to and from group flights, use of snorkeling equipment and use of kayaks (where available), tips (except to ship's crew), taxes and service charges, services of a ship physician, and services of our expedition staff. In addition, the Monteverde + Costa Rica to Panama itinerary includes three hotel nights and all meals. The Panama to Costa Rica + Monteverde, Arenal Volcano & Tortuguero itinerary includes seven hotel nights and all meals. All three itineraries include portage and services of a local naturalist guide.

**Not Included:** Extensions; horseback riding; passport/visa fees; baggage/accident/travel protection plan; items of a personal nature such as alcoholic beverages, voyage DVD, email and laundry; gratuities to ship's crew at your discretion.

**Airfare:** For all programs, airfare is an additional cost unless otherwise indicated. Sample airfares are subject to change. We will gladly assist in making your air arrangements for a \$50 per person service fee.

## TERMS & CONDITIONS

**Reservations:** To reserve your place, an advance payment is required at the time of reservation. The per person advance payment amount varies by program, and is outlined in our brochures, as well as on our website. Payment is accepted by Visa, MasterCard, American Express, Discover, or by check. Receipt of your initial payment indicates your acceptance of our complete Terms and Conditions. We require written notice at the time of reservation for any physical condition, diet, or treatment requiring special attention. Once your reservation is confirmed, we urge you to use your personalized online account for important information to help you prepare for your voyage. Managing your documents online will facilitate fast and accurate communication, and allow you to provide us with pertinent details we require, in order to complete your reservation. Your online account gives you access to your Expedition Guide, which includes valuable information specific to your voyage. You can also use your online account to make easy payments, view recommended flights and reading material, packing list, and so much more.

**Final payment:** Final payment is due 90 days prior to departure.

**Travel Protection Plan:** We strongly recommend that you take advantage of our Travel Protection Plan. This plan offers comprehensive coverage to protect you from cancellation fees, costs incurred due to trip delays/interruption, and damaged or lost baggage, and provides medical assistance and evacuation during your travels. Our Travel Protection Plan is available for U.S. and Canadian residents only, and may be purchased any time prior to final payment due date. Travel Protection premiums are non-refundable once plan is purchased.

**Smoking Policy:** Smoking is allowed only in designated outdoor areas.

**Responsibility and Other Terms & Conditions:** Among other things, limitations of Lindblad Expeditions' and the National Geographic Society's liability for loss of property, injury, illness or death during the voyage will be provided to all guests on the ship's ticket sent prior to departure, and are also available on our website at [www.expeditions.com/terms](http://www.expeditions.com/terms), or upon request. By registering for a trip, the guest agrees to all such terms and conditions.

**Note:** Itineraries and prices listed in this brochure are

valid as of publication date, and are subject to change. Under normal conditions, the total expedition cost is guaranteed at the time of booking. However, the published price is determined far in advance of initial departure on the basis of then-existing projections of fuel and other costs. In the event we determine that current costs create an unsustainable financial model, including but not limited to increases in the price of fuel, currency fluctuations, increases in government taxes or levies, or increased security costs, we reserve the right to pass on these costs to you, to cover such unexpected increases. We will always provide a transparent accounting of the reason for such an increase in costs.

## CANCELLATION POLICY

Number of Days Prior to Expedition Start	Per Person Cancellation Fee
120 or more days	\$350*
119-90 days	Advance payment cost
89-60 days	25% of trip cost
59-45 days	50% of trip cost
44-0 days	No refund

\*\$350 will be rewarded in the form of a Lindblad Expeditions Travel Certificate. This cancellation policy applies to expeditions and may differ for extensions. The effective date of a cancellation will be the date on which your notice is received. Note: Airline cancellation policies vary by carrier, as well as the type of fare used to issue your ticket. Any revisions you make within the cancellation penalty period, such as departure date or choice of voyage, are subject to cancellation fees. Additional Terms and Conditions may apply. For complete terms, please visit our website at [www.expeditions.com/terms](http://www.expeditions.com/terms).

We are proud to be a Founding Member of Adventure Collection —a family of the world's most trusted and experienced active travel companies. Each member company of Adventure Collection is dedicated to enriching the lives of its guests and to giving back to the areas in which it travels. For more information visit [www.AdventureCollection.com](http://www.AdventureCollection.com).

Lindblad Expeditions, as an Active Member of the United States Tour Operators Association ("USTOA"), is required to post \$1 Million with USTOA to be used to reimburse, in accordance with the terms and conditions of the USTOA Travelers Assistance Program, the advance payments of Lindblad Expeditions customers in the unlikely event of Lindblad Expeditions bankruptcy, insolvency or cessation of business. Complete details of the USTOA Travelers Assistance Program may be obtained by writing to USTOA at 275 Madison Avenue, Suite 2014, NY, NY 10016, or by e-mail to [information@ustoa.com](mailto:information@ustoa.com) or by visiting their website at [www.USTOA.com](http://www.USTOA.com).

**Photo Credits:** Willy Alfaro, Gregory Basco/ Visuals Unlimited, Steffen Binke/Alamy, Steve bly/Alamy, Jose R. Calvo S. Michael Cicchetti/Shutterstock, Stewart Cohen, Corbis, Alexandra C. Daley-Clark, Ralph Lee Hopkins, Frans Lanting, Sven-Olof Lindblad, Jeff Mauritzen, Michael Melford, Michael S. Nolan, Radius Images/ Alamy, Marco Ricca, Kevin Schafer, Susan Seubert, Superstock, Shutterstock, SIME/eStock Photo, David Vargas.

©2015 Lindblad Expeditions  
Lindblad Expeditions and the Eye are the trademarks of Lindblad Expeditions. All rights reserved.  
NATIONAL GEOGRAPHIC and the Yellow Border are the trademarks of the National Geographic Society. All rights reserved.

## Recent Honors and Awards

- » Condé Nast Traveler's 2014 Reader's Choice Awards-Top Small Ship Cruise Lines, 2014
- » Condé Nast Traveler World Savers "Doing it All" Award, 2013
- » Condé Nast Traveler Readers' Choice Award-Top 25 Cruise Lines, 2013
- » Condé Nast Traveler "Gold List", 2013, 2009, 2008, 2007, 2006, 2005
- » Virtuoso "Sustainable Tourism Leadership-Supplier" Award, 2013
- » Travel + Leisure "World's Best" Award for Small-Ship Cruise Lines, 2013, 2012, 2011, 2010, 2009, 2008
- » Travel + Leisure "World's Best for Families" Award for Small-Ship Cruise Lines, 2012, 2011, 2010, 2009
- » Cruise Critic Editor's Pick Awards "Best for Adventure," 2013, 2012, 2011, 2010
- » Climate Champion Award to Sven Lindblad by Clean Air-Cool Planet, 2009
- » Conservation Achievement Award for Corporate Achievement from National Wildlife Federation, 2008
- » Tourism for Tomorrow "Global Tourism Business Award," 2007
- » Go to [www.expeditions.com/awards](http://www.expeditions.com/awards) for an extended list.

**For Reservations: Contact your travel advisor or Lindblad Expeditions**

**1.800.EXPEDITION  
(1.800.397.3348)**

**Reservation Hours:  
Monday – Friday 9am – 8pm ET  
Saturday & Sunday 10am – 5pm ET**

**Lindblad Expeditions, Inc.  
96 Morton Street, New York, NY 10014  
Phone: 212.261.9000  
Fax: 212.265.3770**

**email: [explore@expeditions.com](mailto:explore@expeditions.com)  
For additional information and  
online reservations, visit us on the  
Web: [www.expeditions.com](http://www.expeditions.com)**





96 Morton Street  
New York, NY 10014

PRSRT STD  
U.S. POSTAGE  
PAID  
LINDBLAD  
EXPEDITIONS

Account Number:

Expedition Code:

**1.800.EXPEDITION | WWW.EXPEDITIONS.COM**

♻️ Printed on 10% recycled content paper with soy-based inks. We recommend that you pass this along for others to enjoy or recycle.

**WLD-055**

**Take advantage of our Special Offer: COMPLIMENTARY PANAMA 2 DAY/1 NIGHT PRE- OR POST-EXTENSION on select departures. See page 24 or call for full details.**

