

# ALASKA

**DISCOVER  
WILD ALASKA**

**KAYAK, HIKE, SEE THE  
UNDERSEA & SHOOT  
YOUR BEST PHOTOS**

**WITH  
AN EXCLUSIVE  
HAIDA GWAII VISIT  
& SPECIAL EXTENSIONS**



ABOARD THE 62-GUEST *NATIONAL GEOGRAPHIC SEA LION & SEA BIRD* | 2015



**Lindblad  
Expeditions**



**NATIONAL  
GEOGRAPHIC™**

As astonishing as the photos in National Geographic  
And an exhilarating life adventure:

## A Lindblad-National Geographic In-depth Alaska Expedition



Lindblad  
Expeditions



NATIONAL  
GEOGRAPHIC™

Lindblad Expeditions and National Geographic have joined forces to further inspire the world through expedition travel. Our collaboration in exploration, research, technology and conservation will provide extraordinary travel experiences and disseminate geographic knowledge around the globe.



## Dear Traveler,

I invite you to look at a map of Alaska and locate the Southeast region, often called the panhandle: it's less than 400 miles from its southernmost to northernmost boundaries. But with hundreds of fjords, many discharging icebergs from their massive glaciers, and secluded inlets and bays by the score, there's several thousand miles of shoreline to explore in that relatively small region alone. And that's where we spend our time in Alaska, experiencing remarkable wilderness, freed from the need for ports or docks by our nimble, go-anywhere expedition ships.

Our fleet of expedition landing craft can take you ashore more or less anywhere. Kayaks provide you the opportunity for personal, up-close explorations. Hydrophones allow you to listen in on the communications of the whales that we observe at close quarters. Our undersea specialist dives to bring you amazing HD video and insight into the surprisingly rich life of the Alaskan undersea. And best of all, we have a full complement of engaging naturalists, the largest team working in Alaska, to illuminate all you'll see; and a Lindblad-National Geographic certified photo instructor to help you take your best photos ever.



*Just for perspective,  
we're on the right.*

It was 1981 when I hired a floatplane, with a team, to first scout our inaugural itineraries. I could not believe the beauty, the majesty, and the extraordinary amount of wildlife. We've been here every summer since. In our 30+ years voyaging here, we've shared Alaska with some 30,000 people, but only 62 at any one time— it's an intimate experience, which kindles amazing esprit de corps. Our twin ships are comfortable not flashy or fancy—National Geographic's Digital Nomad, writer and blogger Andrew Evans, once referred to National Geographic Sea Bird as "the closest to being on Jacques Cousteau's *Calypso* that he'd ever get to be." And our crew and staff fully understand why you are here and will care for your needs and desires with warmth and gracious hospitality.

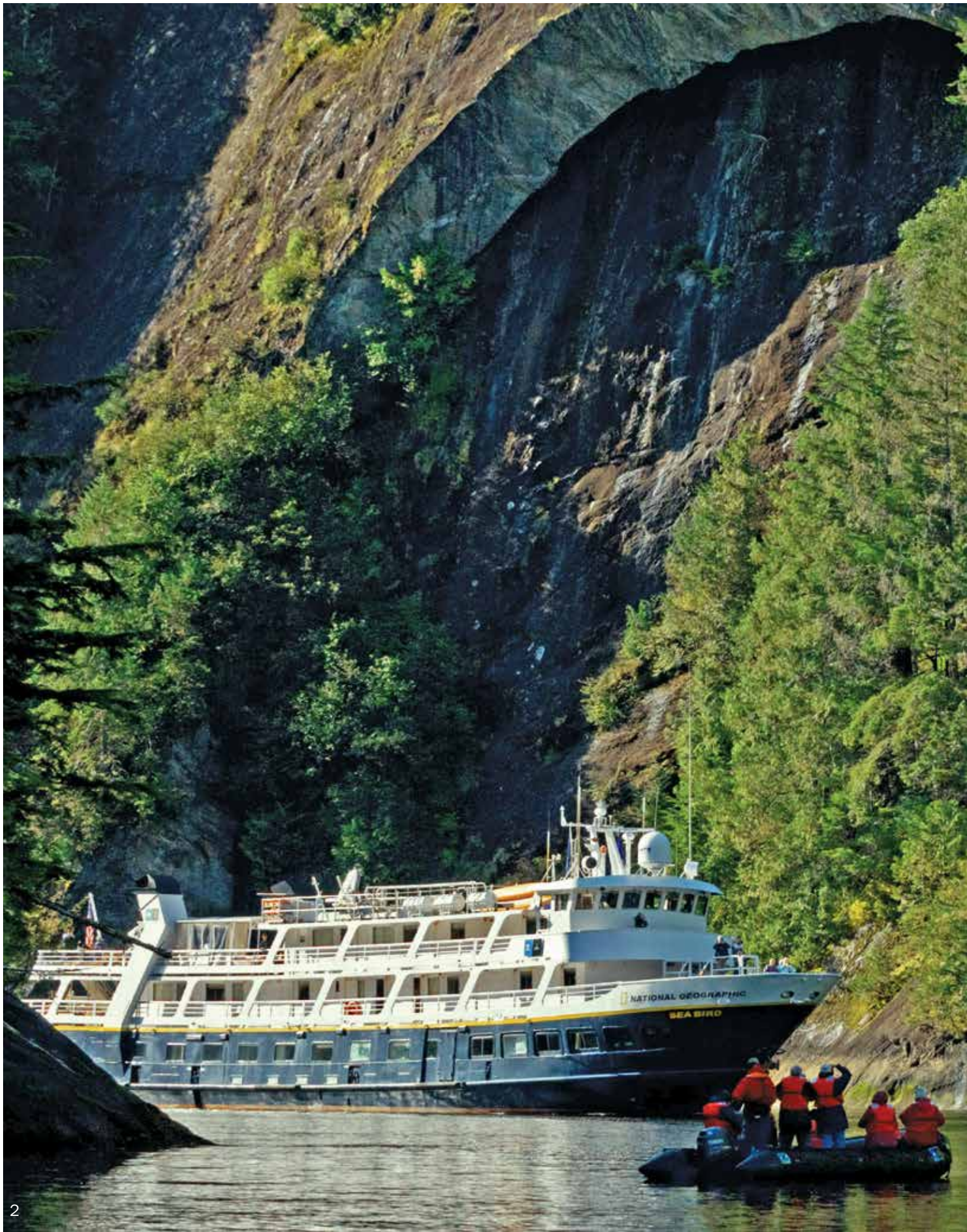
Joining us in Alaska really is one of the best travel decisions you could make—I promise.

Yours sincerely,

Sven-Olof Lindblad

P.S. We are honored to have been granted exclusive permission as U.S. vessels to visit Haida Gwaii for the first time in decades, and to have been invited back this season. See pages 10 & 22 for more. Also, why not take advantage our new Seattle extension, page 25, it's the perfect introduction to, or reunion with, one of America's most endearing cities.

Cover photo: Guests explore the magnificent scenery including calved icebergs by expedition landing craft. © Michael S. Nolan.  
Left: Guests explore Le Conte Bay's glacial ice aboard an expedition landing craft.





# SEE THE ALASKA YOU WOULD OTHERWISE MISS



Whale fluke.

To discover the wild, awe-inspiring reaches of Southeast Alaska, you have to sail into the narrow channels where whales and wildlife come to feed; and sail up winding fjords that terminate in towering glaciers—and then venture even closer

aboard expedition landing craft and kayaks. Our **62-guest expedition ships** are perfectly sized for in-depth exploration. Ample deck space easily accommodates all guests at once to share the best views and the thrills of each sighting—whales breaching and feeding, glaciers crashing, and bears foraging along the shore—plus, hear **insights and commentary** from your expedition team, the largest in Alaska with five naturalists and an expedition leader.

**Special permits** from the National Park Service and U.S. Forest Service allow us to sail far into Glacier Bay National Park and wild, remote regions of the Tongass National Forest. And you'll go even more in-depth with cool tools for exploring, including a **fleet of eight solo and 12 double kayaks and five expedition landing craft**. Board one to draw close to glaciers, or paddle a kayak in a peaceful cove for a personal, water-level encounter with wildness. A **hydrophone** allows us to listen to the strange vocalizations of whales, and a **video microscope** to see the tiny creatures that make this water so productive, plus an **undersea specialist** films during dives to reveal the mysteries of the deep.



*Above: Our ships are outfitted with a fleet of solo and tandem kayaks that allow you to explore at your own pace; Left: National Geographic Sea Bird in Alaska transits Misty Fjords National Monument, Southeast Alaska.*

# DISCOVER ICONIC AND UNEXPECTED WILDLIFE

With 30+ years of exploration in Alaska, we've discovered when and where to go to get you up close to Alaska's iconic wildlife, as well as the smaller, unheralded creatures.

Linger on deck as we sail through forest-framed channels and watch humpback whales tail-lobbing and feeding—no binoculars needed. See hauled out Steller sea lions from our expedition landing craft, killer whales slicing through the water in pursuit of prey, and playful otters resting in kelp forests while diving down to collect sea urchins.



*Eagle.*

Watch a brown bear and her cubs forage along the shore as our naturalists stay on the lookout for rare wolf sightings. Gaze upward in search of mountain goats, who seemingly thread their way along impossible cliffs.

See eagles, puffins, guillemots, kittiwakes, and murre. Birders can sometimes tick off a dozen species in a single afternoon. Experience the peace of standing at the foot of towering hemlock and Sitka spruce trees. And discover the creatures you never imagined: carnivorous plants, brilliantly colored anemones, and strange banana slugs.



*Harbor seal.*



*Brown bear.*

It's one National Geographic moment after another, as the clips below show. Each is worth more than a thousand words. So, take a look at why exploring Alaska is so thrilling.



**WILD WATERS**

» EXPEDITIONS.COM/WILDWATERS



**THIS CLOSE**

» EXPEDITIONS.COM/THISCLOSE



**ALASKA MOMENT**

» EXPEDITIONS.COM/ALASKAMOMENT



**“Watching humpback whales is a life-changing experience. Lindblad Expeditions-National Geographic has contributed to the knowledge base of this unique community of these findings with travelers in the depths of the Alaskan wilderness.”**

— DR. FRED SHARPE, PRINCIPAL INVESTIGATOR,  
ALASKA WHALE FOUNDATION

# THE RICHEST WHALE VIEWING EXPERIENCE

Our ships allow us to go deeper into the domain of the whales. With our knowledge and skill in timing, we can position perfectly to be “there” when whales are—creating amazing observations and photo ops. In addition, researchers from the Alaska Whale Foundation come aboard to share their knowledge and latest findings about humpback behavior. They are able to provide insight into some of the whale behaviors we may see, including tail-lobbing, lunge-feeding and even bubblenet feeding strategies. And if the opportunity arises, our naturalists may even drop a hydrophone to reveal the whales’ communication, or give you a whale’s-eye view through exclusive footage shot by National Geographic’s Crittercam team.



*Dr. Fred Sharpe*

» SEE WHAT'S IT'S LIKE AT [EXPEDITIONS.COM/WHALES](https://www.lindblad.com/expeditions.com/whales)



*Breaching humpback whale.*





# EVEN EXPLORE THE ALASKAN UNDERSEA

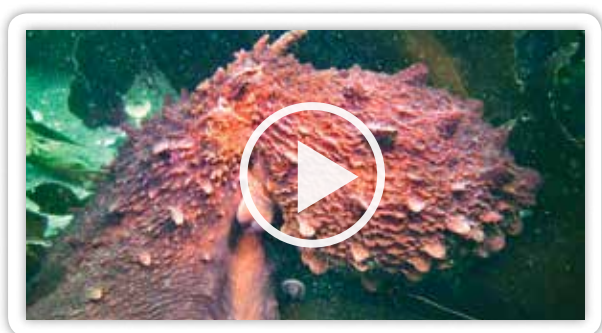
See more of Alaska than anyone else, and more than you ever imagined. No other travel company offers an exploration of the vivid and surprising undersea life found in Alaska. On every departure your undersea specialist will don special cold-water diving gear to explore the depths of the undersea to shoot video of the otherworldly creatures, which you'll see on TV screens from the comfort of the lounge. See the vast kelp forests swaying in the currents and discover strange and wonderful marine life: anemones, jellies, rockfish and unusual life forms that are only found beneath the water's surface. Watch as your undersea specialist's bright lights dance across the seafloor, revealing the brilliant purples and greens.



Left: Bright lights reveal the vibrant seafloor of benthic life in Alaska. Above: Nudibranch, Lake Eva.

**“Guests are so surprised by the colors. They don’t expect to see pinks and yellows and purples. They expect it to be all drab and browns and greens, but it’s absolutely beautiful down there.”**

—JUSTIN HOFMAN, UNDERSEA SPECIALIST



**WATCH A FASCINATING  
PACIFIC OCTOPUS ENCOUNTER**

» [EXPEDITIONS.COM/OCTOPUS](https://www.expeditions.com/octopus)



Download a QR code Reader app with your smart phone and scan this code.

# RARE ACCESS

## HAIDA GWAI

Haida Gwaii (pronounced HY-duh-GWY, formerly the Queen Charlotte Islands) is a spectacular archipelago off the coast of British Columbia—with islands that are among the wildest, most intriguing places on the planet. We have been granted special permission to bring *National Geographic Sea Lion* and *Sea Bird* into Gwaii Haanas National Park Reserve and Haida Heritage site.

In SḠang Gwaay (Ninstints), a UNESCO World Heritage site, you'll walk among the age-old totem poles that stand as sentinels of a culture both ancient and modern. It is a chance to learn about the lives and ways of the Haida people that few travelers are granted. Meet the watchmen charged with safeguarding the sacred site, and hear their stories of the memorial totems they guard and learn their rich heritage.

Guests on the springtime *Remarkable Journey to Alaska, British Columbia & Haida Gwaii* will see the region's abundant wildlife wake from its winter slumber—including black bears that grow larger than anywhere else in the world—and some of the 39 endemic subspecies of animals and plants. Walk forest paths carpeted in several inches of spongy moss, see eagles and ravens, and the return of humpback whales.





**“Home to the finest collection of argillite carvings in the world, as well as contemporary art and scores of wooden and stone artifacts recovered from ghostly villages scattered throughout the archipelago, the Haida Heritage Centre is the symbol of the resurrection of Haida culture.”**

—WADE DAVIS, NG EXPLORER-IN-RESIDENCE



## **PLUS, LEARN THE LEGENDS OF GLACIER BAY ON EVERY EXPEDITION**

On every Alaska expedition a Huna Tlingit Interpreter joins us aboard as we sail into Glacier Bay National Park. This land is their ancestral home, and we see beyond its spectral glaciers and pristine wildness, cast in a new light through their lore and legends.



*Clockwise from top: Totem poles at Haida Heritage Centre at Kay Lnagaay, Skidegate; Huna Tlingit Cultural Interpreter; Guests hiking a temperate rain forest in Cumshewa Inlet, Haida Gwaii.*

# AN EXPEDITION TEAM THAT MAKES THE DIFFERENCE

Over the 45+ years of our history, the quality of our veteran staff and their companionship is the reason the Lindblad name is known and respected for top-quality expeditions. Your team consists of an expedition leader and five naturalists, including a Lindblad-National Geographic certified photo instructor and an undersea specialist, in addition to a wellness specialist. We invest significantly to keep a guest-to-staff ratio of 10:1. This means optimally-sized groups for you, plus diverse expertise and varying perspectives.

*Hiking through a lush old-growth forest.*



## REPRESENTING OUR ALASKA SEASON TEAM:



**EXPEDITION LEADER**  
**JEN MARTIN**

A naturalist and expedition leader, Jen is an expert at sharing the diversity of wildlife and indigenous cultures of the places we explore.



**NATURALIST**  
**LEE MOLL**

A professional naturalist since 1988 with a particular interest in botany, marine mammals, ornithology, and geology.



**NATURALIST/UNDERSEA SPECIALIST**  
**JUSTIN HOFMAN**

A marine biologist and photo instructor, Justin will dive and shoot video and bring the mysterious undersea to life during the expedition.



**NATURALISTS PETE & GRETCHEN**  
**PEDERSON**

Former Backcountry Rangers and guides in Denali National Park and accomplished wildlife biologists.



**NATURALIST/CERTIFIED**  
**PHOTO INSTRUCTOR**  
**SHARON GRAINGER**

An anthropologist and psychologist, Sharon is also an expert photographer and ethnobotanist.



**WELLNESS SPECIALIST**  
**SUSAN MOEBUS**

A licensed massage therapist, she embodies the holistic mind *and* body spirit of our expeditions.



## NATIONAL GEOGRAPHIC

### EXPERTS ON BOARD

**CASEY ANDERSON**

Host of *Expedition Wild* on the National Geographic Channel, Casey Anderson is the trainer and best friend of Brutus the Bear, a grizzly cub he rescued.



A bear expert, he is the co-owner and director of the Montana Grizzly Encounter, a sanctuary in Bozeman, Montana.

See bears with Casey on the **May 16** and **May 23** departures of **Exploring Alaska's Coastal Wilderness**.

**JON WATERHOUSE**

National Geographic Fellow and Presidential appointee to advise the Commission for Environmental Cooperation, Jon Waterhouse offers insight on conservation and indigenous communities. In 2007,



a request by the native elders and tribal leaders living in the Yukon River watershed that he "go out and take the pulse of the river" led to an effort to remove more than 12 million pounds of trash from the Yukon watershed.

Join Jon on the **June 27** departure of **Exploring Alaska's Coastal Wilderness**.

# EXPEDITION PHOTOGRAPHY OUR EXCLUSIVE PROGRAM

Unique in the world of travel, our Expedition Photography program offers guests of every skill and interest level unrivaled photography opportunities—including a Lindblad Expeditions-National Geographic certified photo instructor on board every expedition. Photo enthusiasts, from beginner to semi-pro can stand side-by-side with accomplished photographers and pick up tips in an extraordinary field environment. Their expertise will inspire you and help you improve your skills—so you can return home with great shots, or a complete photo record of your experience of a lifetime.



*Top: Our ships are excellent platforms for photography; Guests get an up-close look at Steller sea lions aboard expedition landing craft.*







# NATIONAL GEOGRAPHIC

## TRAVEL WITH NATIONAL GEOGRAPHIC PHOTOGRAPHERS

Certain Alaska departures are Photo Expeditions offering total immersion in the world of professional travel and wildlife photography. They offer the unprecedented opportunity to shoot with and learn from a National Geographic photographer and two Lindblad Expeditions-National Geographic certified photo instructors. Outings are timed to take advantage of the best lighting, and on board seminars and photo talks offer tips and tricks.

Photo Expeditions offer all the same experiences and opportunities as all our expeditions—the cool tools to explore, kayaking, hiking, and up-close encounters with wildlife—plus the chance to develop photography skills that will last a lifetime.

**2015 PHOTO EXPEDITIONS**  
**Exploring Alaska's Coastal Wilderness:**  
**Jun. 13, 20; Aug. 29, 30**  
**A Remarkable Journey to Alaska, British Columbia & Haida Gwaii: May 2, 3; Sep. 5, 6**

### Choose a select departure and learn from these Top National Geographic Photographers



**RICH REID**  
**MAY 2**  
Filmmaker, environmental and adventure photo expert.



**FLIP NICKLIN**  
**AUG. 29 & SEP. 5**  
Alaska resident and legendary marine mammal photographer.



**MACDUFF EVERTON**  
**MAY 3**  
Contributing editor of *National Geographic Traveler*.



**SUSAN SEUBERT**  
**AUG. 30 & SEP. 6**  
Photographer with more than 20 *National Geographic Traveler* features.



**MICHAEL MELFORD**  
**JUN. 13 & 20**  
A National Geographic Society photographer for over 25 years.





*Photography presentation.*



*On the bridge.*





Cocktails at Recap.



Guests get a front row seat to Alaska's natural beauty on the bow of our ships.

# JOY OF ALASKA EXPEDITION-STYLE



Our founder, Sven Lindblad, spent his formative years in Africa, working as a guide with a high-end safari operator, and the words of his mentor have always stayed with him: “only a fool has to suffer in the bush.” That’s why our hotel staff and chefs are integral to every expedition—as important to the intricate calculus aboard as the expedition leader and the captain. Their ability to respond flexibly keeps our vital expeditionary spirit fed,

so to speak. You can eagerly rush to the deck for a spontaneous dinner hour whale sighting, without fear that it’s wreaking havoc in the kitchen. Dinner will still be superb. Like the ship’s connectedness to the outdoors, each meal is a window of sorts, reflecting local, sustainable cuisine whenever possible, including fresh fish from Alaskan waters. Breakfast, lunch and dinner aboard earn rave reviews from guests. You’ll discover that life aboard our 62-guest expedition ships is warm and welcoming, with everyone participating equally in the adventure. Evening Recaps in the lounge are a chance to swap stories of the day’s surprises with family and new friends over hors d’oeuvres and cocktails.



# FAMILY ADVENTURE WITH MEANING

Exploring Alaska's wilderness gives families and multi-generational groups the chance to share meaningful experiences in a natural way. Expeditions are unforgettable. You will always remember kayaking side-by-side through near-mythic wildness, and sharing the magic of watching whales rocket out of the water.

## **Bring the Family or Make it a Multi-Generational Adventure**

We believe sharing an expedition with your kids or grandkids is a life-enhancing experience. So take \$500 off for each child under the age of 18, based on double occupancy. Call for details.





## KIDS GET MORE WITH LINDBLAD EXPEDITIONS-NATIONAL GEOGRAPHIC:

- ✓ Photo workshops with our Lindblad-National Geographic certified photo instructor, using smart phones and/or point & shoot cameras
- ✓ Journals & journaling time to record kids' daily activities
- ✓ Scavenger hunts
- ✓ Hands-on science program: kids use the onboard video microscope to view and identify undersea specimens; learn about conservation efforts in Alaska
- ✓ Kid-friendly menu options, with a special kid's pizza & movie night.
- ✓ Expedition landing craft driving lessons & "certificates of achievement"
- ✓ Hands-on nature lessons with our naturalists who are trained to work with kids & are excellent role models



*Clockwise from left: Guests observe calving at South Sawyer Glacier from water level; Kayaking provides opportunities for personal exploration; Kids of all ages enjoy a hike.*

### FAMILY ADVENTURE

» [EXPEDITIONS.COM/ALASKAFAMILY](https://www.expeditions.com/alaskafamily)

# EXPLORING ALASKA'S COASTAL WILDERNESS

8 DAYS/7 NIGHTS—ABOARD *NATIONAL GEOGRAPHIC SEA BIRD*  
AND *NATIONAL GEOGRAPHIC SEA LION*

PRICES FROM: \$6,290 to \$11,010 (See pages 27 for complete prices.)

Experience the remarkable beauty of Southeast Alaska on a voyage aboard the *National Geographic Sea Bird* or *National Geographic Sea Lion* into a land of mist-shrouded fjords, tidewater glaciers, and islands teeming with wildlife. Search for orcas and humpback whales, kayak amid glacial ice, spend a full day in Glacier Bay National Park, and learn about Alaska's rich Tlingit heritage.

## EXPEDITION HIGHLIGHTS

- ▶ Kayak into protected coves and look for sea otters, seabirds, and harbor seals.
- ▶ Hike through lush forests to cascading waterfalls, and ride an expedition landing craft into coves to look for brown bears.
- ▶ Meet members of the Alaska Whale Foundation to learn about the local whale population, and get a firsthand perspective on Alaska's indigenous people from a Tlingit cultural interpreter.
- ▶ Discover Alaska's seldom-seen, vibrant marine life revealed by our undersea specialist.

*A veil of water cascades off of a breaching humpback whale.*

## EXPERIENCE & EXPERTISE

**30+**  
**YEARS**  
**EXPERIENCE**

Our unparalleled 6-person expedition team is key to an in-depth experience.

An expedition leader, three naturalists, a Lindblad-

National Geographic certified photo instructor and undersea specialist, plus a wellness specialist and video chronicler, all contribute to your understanding of Alaska's wonders. Certain departures will feature a National Geographic photographer or expert.

*Visit our website to read staff and guest speaker bios for this expedition.*



### DAY 1: JUNEAU, ALASKA/EMBARK SHIP

Fly from Seattle to Juneau. Meet your naturalists and visit Mendenhall Glacier, set in the dramatic Mendenhall Valley. Settle into your cabin before dinner. Later, explore the port of Juneau on your own. (D)

### DAY 2: TRACY ARM—FORDS TERROR WILDERNESS

Voyage into Tracy or Endicott Arm, both spectacular fjords, with waterfalls cascading from glacially carved walls. See the soaring Dawes or South Sawyer Glacier up close and take a cruise in an expedition landing craft for an unbeatable view of sculpted icebergs. Keep an eye out for harbor seals, porpoises and arctic terns. (B,L,D)

### DAY 3: PETERSBURG

Search for humpback whales as we head towards the small, true Alaskan town of Petersburg on Mitkof Island. Explore a unique Southeast Alaskan ecosystem, the “muskeg,” with stunted trees and carnivorous plants. There is an opportunity for bike riding and an optional floatplane excursion. Enjoy a crab feast this evening. (B,L,D)



Petersburg.

### DAY 4: FREDERICK SOUND AND CHATHAM STRAIT

With luck, we'll see whales breaching, tail-slapping and feeding. We'll explore spectacular bays and inlets, following bear trails and salmon streams. Later, hike or kayak for up close exploration. (B,L,D)

### DAY 5: ICY STRAIT AND THE INIAN ISLANDS

Hike and kayak among the Inian Islands, where an abundance of Steller sea lions and sea otters reside. We'll search for whales in the rich waters of Icy Strait and, conditions permitting, lower the ship's hydrophone to listen in on the whales' communication. (B,L,D)

### DAY 6: GLACIER BAY NATIONAL PARK

By special permit, we explore Glacier Bay, a not-to-be-missed gem of Alaska. See glaciers that end abruptly at the water's edge and observe them “calving”—tons of ice crashing into the sea—accompanied by an exhilaratingly thunderous sound. Wilderness abounds—mountain goats and brown bears patrol the shore; harbor seals, Steller sea lions and puffins live in these icy waters. A native Tlingit interpreter joins us to share the lore and legend of the area. We will also be joined by a National Park Service Ranger. (B,L,D)

### DAY 7: SOUTHEAST ALASKA'S ISLANDS, BAYS AND FJORDS

Today, nature is our guide. We may explore an isolated beach to take a closer look at tide pools, beachcomb, and hike stunning forest trails, or see bear tracks worn into the soil while walking an isolated meadow. Sightings of bald eagles are very common. If conditions permit, we'll do some kayaking, always watching for marine and terrestrial life. (B,L,D)

### DAY 8: SITKA/DISEMBARK/SEATTLE

After breakfast we disembark in Sitka, Southeast Alaska's only oceanfront town. Visit the onion-domed St. Michael's Russian Orthodox Church. At the Raptor Rehabilitation Center, we have close views of species normally seen at a distance. Drive to the airport for our afternoon flight to Seattle. (B)



Alaska's still waters are perfect for kayaking.



## EXPEDITION DETAILS

**DATES:** 2015: May 16\*, 17\*, 23, 24, 30\*, 31\*; Jun. 6, 7, 13\*📷, 14\*, 20📷, 21, 27\*, 28\*; Jul. 4, 5, 11\*, 12\*, 18, 19, 25\*, 26\*; Aug. 1, 2, 8\*, 9\*, 15, 16, 22\*, 23\*, 29📷, 30📷

\*Indicates itineraries in the reverse order, from Sitka to Juneau.

📷 *Photo Expedition.* These departures are for passionate photographers with hands-on instruction from our Photo Expedition team.

### NATIONAL GEOGRAPHIC EXPERTS

National Geographic TV host and bear expert **Casey Anderson** will be aboard **May 16** and **23**. Join award winning National Geographic photographer **Michael Melford** on **June 13** and **20**. Or, join conservationist and expert on indigenous communities **Jon Waterhouse** on **June 27**. Also, National Geographic photographers **Flip Nicklin** and **Susan Seubert** will be aboard **Aug. 29** and **Aug. 30** departures.

### SPECIAL OFFER

Book by Dec. 31, 2014 and receive complimentary round-trip airfare between Seattle and Alaska on select May and June, 2015 departures.

### EXPLORE TONGASS NATIONAL FOREST

Our Forest Service Special Use Permit for Tongass National Forest enables you to hike and kayak in wild and remote areas of Southeast Alaska.

# A REMARKABLE JOURNEY TO ALASKA, BRITISH COLUMBIA & HAIDA GWAII

15 DAYS/14 NIGHTS—*NATIONAL GEOGRAPHIC SEA BIRD & SEA LION*

PRICES FROM: \$10,390 to \$17,790 (See page 27 for complete prices.)

Join a unique expedition in Alaska's Inside Passage and British Columbia including Haida Gwaii (formerly the Queen Charlotte Islands) off the coast of British Columbia. We are the only company with ships carrying more than 22 guests permitted to visit Gwaii Haanas National Park Reserve, National Marine Conservation Area Reserve, and Haida Heritage site in over two decades. Here, you'll see the ancient totems at SGang Gwaay (Ninstints), a UNESCO World Heritage site, meet with local artisans, in a region rich with seldom-seen endemic species.

## EXPEDITION HIGHLIGHTS

- ▶ Explore glacially-carved fjords, Glacier Bay National Park, and search for humpback whales in their summer feeding grounds.
- ▶ Kayak among glacial ice, see waterfalls cascading from glacially carved walls, and hike old-growth forest where paw prints outnumber foot prints.
- ▶ Explore ancestral Haida villages, see ancient totem poles, take part in a traditional dance performance, and much more.
- ▶ Be amongst endemic species in Haida Gwaii, considered the "Canadian Galápagos" for its wildlife-rich intertidal zone, including the world's largest black bears.

*Standing poles at Ninstints.*

## EXPERIENCE & EXPERTISE

**30+**  
**YEARS**  
**EXPERIENCE**

Our unparalleled 6-person expedition team is key to an in-depth experience. An expedition leader and five naturalists, including a certified photo instructor and undersea specialist, contribute to your understanding of Alaska's wonders, in addition to a wellness specialist and video chronicler. National Geographic experts and photographers will add more learning on each departure.

*Visit our website to read staff and guest speaker bios for this expedition.*





### DAY 1: SEATTLE/EMBARK

Arrive in Seattle this afternoon and embark the ship. (D)

### DAY 2: GULF ISLANDS, BRITISH COLUMBIA

Search for orca whales and cruise around forested islands. (B,L,D)



Cultural dance performance.

### DAY 3: JOHNSTONE STRAIT AND ALERT BAY, BRITISH COLUMBIA

Visit the U'mista Cultural Centre in Alert Bay, where we'll watch traditional First Nations performances and learn from the Kwakwaka'wakw people. (B,L,D)

### DAY 4-5: INSIDE PASSAGE OF BRITISH COLUMBIA

Head northward along the untouched coastline looking for whales, dolphins, bears, deer and other wildlife. Go ashore to explore or kayak the many bays and inlets. (B,L,D daily)

### DAYS 6-8: HAIDA GWAI

With a shared respect for the natural world, explore the islands of Haida Gwaii. Two Haida interpreters will join us, first visiting the Haida Heritage Center at Kay Lnagaay to learn about the incredible history of the Haida people and the meaning behind their renowned artwork. In the ancestral town of Old Massett, join in a traditional dance performance and feast, and meet local artisans. Explore the Gwaii Haanas National Park Reserve, National Marine Conservation Area Reserve, and Haida Heritage Site. See the ancient totems at SĠang Gwaay (Ninstints) or K'una (Skedans). Kayak and take expedition landing craft around the incredibly biodiverse islands where

black bears are the largest in the world and endemic species thrive. (B,L,D daily)

### DAY 9: MISTY FJORDS, ALASKA

Cruise past glacially carved cliffs and kayak in the stillness of Misty Fiord's forested backwaters. (B,L,D)

### DAY 10: FREDERICK SOUND AND PETERSBURG

Join naturalists on deck and search for orcas, humpback whales, and Steller sea lions. Go ashore for a walk along a quiet forest trail and visit the fishing village of Petersburg, known as "Alaska's Little Norway." Enjoy a crab feast this evening. (B,L,D)

### DAY 11: TRACY ARM-FORDS TERROR WILDERNESS

Voyage into Tracy or Endicott Arm, both spectacular fjords, with waterfalls cascading from glacially carved walls. See the soaring Dawes or South Sawyer Glacier up close and take a cruise in an expedition landing craft for an unbeatable view of sculpted icebergs. (B,L,D)

### DAY 12: JUNEAU

Visit Mendenhall Glacier and observe the ever-changing landscape and ice-carved valley up close. (B,L,D)

### DAY 13: GLACIER BAY NATIONAL PARK

Spend the entire day among enormous glaciers and expansive wilderness. Listen as the quiet stillness of the area is broken by the thunder of tons of ice calving into the sea. A native Tlingit interpreter joins us to share the lore and legend of the area. A National Park Service Ranger will join us as well. (B,L,D)

### DAY 14: SOUTHEAST ALASKA'S ISLANDS, BAYS AND FJORDS

Kayak and hike among forested islands on our final exploration of Southeast Alaska. (B,L,D)

### DAY 15: SITKA/DISEMBARK/HOME

See the picturesque city of Sitka on Baranof Island and meet eagles up close at the Raptor Rehabilitation Center before transferring to the airport for flights to Seattle. (B)



### EXPEDITION DETAILS

**DATES:** 2015 May 2, 3, Sep. 5, 6\*

\*These departures travel in the reverse order, from Sitka to Seattle, making all the same stops.

Photo Expedition

### NATIONAL GEOGRAPHIC EXPERTS

Travel with National Geographic photographer Rich Reid on the May 2 departure or Macduff Everton on May 3. Join marine mammal photographer Flip Nicklin on Sep. 5. National Geographic photographer Susan Seubert will be aboard on Sep. 6 departure.

### SPECIAL OFFER

Book by Dec. 31, 2014 and receive **FREE** one-way air (Sitka/Seattle) on the May 2 or May 3, 2015 departures.

# MORE ADVENTURE: ADD DENALI NATIONAL PARK

PRE- OR POST-VOYAGE EXTENSION  
7 DAYS/6 NIGHTS

\$5,690 per person double occupancy to \$8,090 per person single occupancy. This extension is available before or after select Exploring Alaska's Coastal Wilderness and A Remarkable Journey to Alaska, British Columbia & Haida Gwaii departures between May 30 and September 6, 2015. Limited space available.

Make the most of your time in Alaska by combining your expedition with six nights in Denali National Park and add an inland exploration of this iconic land to your coastal adventure.

With the idyllic North Face Lodge as your base camp you'll experience Denali National Park as few visitors get to. Set deep in the heart of the park, this unique wilderness retreat offers special access to prime hiking and wildlife viewing areas, as well as unparalleled views of Mt. McKinley. Hike, canoe, and bike in the wildness of the remote backcountry by day, and enjoy the plush comforts of a five-star lodge and delectable locally sourced cuisine by night. The small group size enhances the intimacy of outings and opportunities for in-depth learning.



*Canoeing is a great way to discover Denali's dramatic landscape.*



Seattle skyline.

# ADD SEATTLE

## PRE-VOYAGE EXTENSION

**\$2,190 per person double occupancy; \$2,690 per person single occupancy.** This extension is available before every *Exploring Alaska's Coastal Wilderness* or *A Remarkable Journey to Alaska, British Columbia & Haida Gwaii* departure.

Over three days, explore Seattle and Mt. Rainer National Park. Begin by joining our naturalist for a full day of adventure hiking in the forests, viewing wildlife, and possibly snowshoeing in Mt. Rainer National Park. Then spend a day discovering some of Seattle's highlights and lesser-known gems, including a tasting tour through historic Pike Place Market on the waterfront. Choose from a docent-led tour of the Seattle Art Museum or board a floatplane for a bird's eye view of the city, harbor, and Lake Union.



Pike Place Market.

# National Geographic Sea Bird & National Geographic Sea Lion

**CAPACITY:** 62 guests in 31 outside cabins.

**REGISTRY:** United States. **OVERALL LENGTH:** 152 feet.

**PUBLIC AREAS:** Our twin sister ships feature a library; global market; lounge with full-service bar and facilities for films, slide shows and presentations; observation deck; partially covered sundeck with chairs and tables. Our “open bridge” provides guests an opportunity to meet our officers and captain and learn about navigation.

**MEALS:** Served in single seatings with unassigned tables for an informal atmosphere and easy mingling. Breakfast is a wide selection buffet and lunch is often served family style. Menu emphasizes local flair.

**CABINS:** All face outside with windows, private facilities and climate controls.

**EXPEDITION EQUIPMENT:** Bow camera, hydrophone, kayaks, Splash-Cam, underwater video camera, video microscope, and expedition landing craft.

**SPECIAL FEATURES:** Guest Internet access.

A video chronicler on board all voyages.

**WELLNESS:** The vessel is staffed by a wellness specialist and features exercise equipment, LEXspa and outdoor stretching area.



*Above: National Geographic Sea Bird. Far right from top: The dining room with its unassigned seating makes for easy mingling; A comfortable Category 2 cabin; Twin beds can be pushed together to form a double bed in Category 3 cabins on the Upper Deck.*

## Travel Planning With A Difference

Half of travel planning is learning what you don't know and generating questions. The other half is getting answers.

When you call **1.800.EXPEDITION**, you can ask for any one of our Expedition Specialists who have been on our Alaska expedition. They are full members of the Lindblad Expeditions team—students of the natural world and born explorers, not trained call center telemarketers.

**SO WHY NOT TAKE ADVANTAGE OF THEIR EXPERTISE?** Don't hesitate to call with your questions—they're equipped to provide answers based on their knowledge and personal experience.

Ask them about Alaska, how we explore there, our ships, our itineraries, and more. We think you'll find the conversation rewarding.



*You can feel confident speaking with our Expedition Specialists. Many of them have explored Alaska aboard our ships, and can provide you with answers based on knowledge and personal experience.*

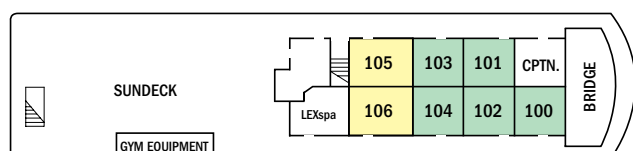
**CATEGORY 1:** Main Deck #300-305 — Conveniently positioned between the dining room & lounge, these cabins feature two single lower beds, a writing desk and a large view window.

**CATEGORY 2:** Bridge Deck #100-104; Upper Deck #200-212, 215 — These well-located cabins include two lower single beds & a view window.

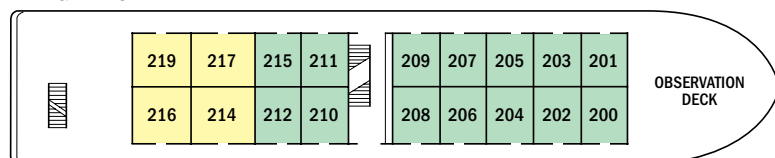
**CATEGORY 3:** Bridge Deck #105, 106; Upper Deck #214, 216, 217, 219 — These cabins feature a seating unit with table and two large view windows. Upper Deck cabins include two lower single beds which can convert to a double bed and a pull-out single bed for a third person; Bridge Deck cabins include two lower single beds only.

**NOTE:** Sole Occupancy cabins are available in Categories 1 and 2 only. Third person rates are available in certain categories at one half the double occupancy rate.

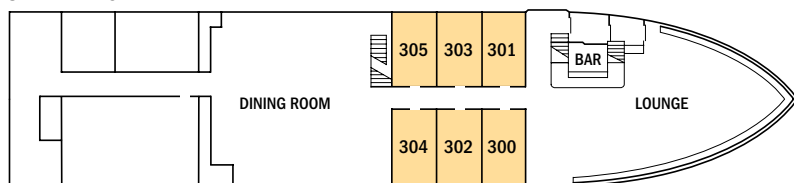
**SHARED ACCOMMODATIONS:** Shares can be arranged at the double occupancy rate in Categories 1 and 2 only.



**BRIDGE DECK**



**UPPER DECK**



**MAIN DECK**

Prices are per person, double occupancy unless indicated as solo.

ITINERARY	YEAR	CAT. 1	CAT. 2	CAT. 3	CAT. 1 SOLO	CAT. 2 SOLO	ADVANCE PAYMENT	NOTE
Exploring Alaska's Coastal Wilderness - Page 20	2015	\$6,290	\$7,340	\$8,390	\$9,440	\$11,010	\$750	Sample Airfares: Seattle/Juneau/Sitka/Seattle or vice versa: Economy from \$570; Business Class from \$990.
A Remarkable Journey to Alaska, British Columbia & Haida Gwaii - Page 22	2015	\$10,390	\$11,860	\$13,830	\$15,590	\$17,790	\$900	Sample Airfares: Seattle/Sitka: Economy from \$280; Business Class from \$600.

# The Lindblad Expeditions- National Geographic difference

## ✓ **Large & Experienced Expedition Team**

One naturalist for every 10 guests ensures dedicated access and attention, plus a wide range of expertise among our naturalists.

## ✓ **Fleet of Expedition Landing Craft & Kayaks**

Five expedition landing craft, plus 12 tandem and eight single kayaks.

## ✓ **Cool Exploration Tools**

Underwater cameras, plus a hydrophone, to hear whale vocalizations.

## ✓ **Lindblad-National Geographic certified photo instructors**

On every departure—a naturalist trained to help shoot excellent photos.

## ✓ **Expedition Ship**

Our ship's bow allows every guest a prime spot for wildlife watching.

## ✓ **Flexibility & Choice**

A hallmark of our expeditions, there are always a variety of options on outings.

## ✓ **Casual Clothes & Attitude**

Casual defines our style. Unassigned seating at dinner makes mingling easy.

## ✓ **Video Chronicler Aboard**

To record your unique expedition experience.

## ✓ **Commitment to Conservation**

Through the Lindblad Expeditions-National Geographic Fund, together with our guests, we've contributed \$690,000 directly to conservation and research.

## ✓ **Alaska Whale Foundation Aboard**

Researchers from the AWF come aboard to provide the latest in fascinating hump-back research.

## ✓ **Undersea Alaska**

Our undersea specialist dives on each voyage and captures video to reveal Alaska's seldom-seen life beneath the sea.

## ✓ **Wellness Specialist Aboard**

Enjoy wellness treatments, massages and morning stretching.

## ✓ **Special Access**

Explore pristine areas by specially arranged permits.

## Inclusive Pricing

Just about everything you have the opportunity to do aboard and ashore is included in the cost of your expedition. The value of what we include, combined with the quality of our service and the excellence of our expedition staff adds up to considerable value. The only things not included are those of a personal nature, or that interest a limited number of people—alcohol, Internet usage, tips to our crew, wellness treatments, and other specialized arrangements.

### **ABOARD SHIP**

- ✓ All meals and nonalcoholic beverages
- ✓ 24-hour coffee, tea & soda on demand
- ✓ Hors d'oeuvres & snacks during nightly Recap
- ✓ Environmentally-friendly refillable water bottle
- ✓ Morning stretch classes with wellness specialist
- ✓ Fitness equipment
- ✓ Access to reference books and board games in the library
- ✓ The guidance and company of our expedition staff

### **ASHORE**

- ✓ Special access permits, park fees, port taxes
- ✓ Transfers to and from group flights
- ✓ The expertise of our expedition staff

### **ACTIVITIES**

- ✓ Expedition landing craft explorations
- ✓ Kayaking
- ✓ Presentations & photo instruction, including a special Alaska Whale Foundation presentation



Brown bear.

# Reservation Information

**Costs Include:** All accommodations aboard ships or in hotels per itinerary or similar, all meals and nonalcoholic beverages aboard ship, meals on land as indicated, air transportation where indicated as included, shore excursions, sightseeing and entrance fees, use of kayaks (where available), special access permits, transfers to and from group flights, use of snorkeling equipment and wet suits, tips (except to ship's crew), taxes and service charges, services of a ship physician on most voyages, and services of our expedition staff.

**Not Included:** Air transportation (except where shown as included), extensions, passport, visa, immigration fees, meals not indicated, travel protection plan, items of a personal nature such as alcoholic beverages, e-mail, voyage DVD, laundry. Gratuities to ship's crew are at your discretion.

**Airfare:** For all programs, airfare is an additional cost unless otherwise indicated. Sample airfares are subject to change. We will gladly assist in making your air arrangements for a \$50 per person service fee.

**Complimentary Airfare:** On voyages with complimentary air offers, complimentary airfare is subject to availability at the time of booking, and is based on economy group flights that must be ticketed by Lindblad Expeditions. In the event complimentary flights are unavailable at time of booking, we reserve the right to issue an air credit. These offers are valid for new bookings only, and may not be combined with other offers. Please call for details.

## TERMS & CONDITIONS

**Reservations:** To reserve your place, an advance payment is required at the time of reservation. The per person advance payment amount varies by program, and is outlined in our brochures, as well as on our website. Payment is accepted by Visa, MasterCard, American Express, Discover, or by check. Receipt of your initial payment indicates your acceptance of our complete Terms and Conditions. We require written notice at the time of reservation for any physical condition, diet, or treatment requiring special attention. Once your reservation is confirmed, we urge you to use your personalized online account for important information to help you prepare for your voyage. Managing your documents online will facilitate fast and accurate communication, and allow you to provide us with pertinent details we require, in order to complete your reservation. Your online account gives you access to your Expedition Guide, which includes valuable information specific to your voyage. You can also use your online account to make easy payments, view recommended flights and reading material, packing list, and so much more.

**Final Payment:** For expeditions of eight nights or less, final payment is due 90 days prior to departure. For expeditions of nine nights or more, final payment is due 90 days prior to departure.

**Travel Protection Plan:** We strongly recommend that you take advantage of our Travel Protection Plan. This plan offers comprehensive coverage to protect you from cancellation fees, costs incurred due to trip delays/interruption, and damaged or lost baggage, and provides medical assistance and evacuation during your travels. Our Travel Protection Plan is available for U.S. and Canadian residents only, and may be purchased any time prior to final payment due date. Travel Protection premiums are non-refundable once plan is purchased.

**Smoking Policy:** Smoking is allowed only in designated outdoor areas.

**Responsibility and Other Terms & Conditions:** Among other things, limitations of Lindblad Expeditions' and the National Geographic Society's liability for loss of property, injury, illness or death during the voyage will be provided to all guests on the ship's ticket sent prior to departure, and are also available on our website at [www.expeditions.com/terms](http://www.expeditions.com/terms), or upon request. By registering for a trip, the guest agrees to all such terms and conditions.

**Note:** Itineraries and prices listed in this brochure are as of publication date, and are subject to change. The company reserves the right to impose surcharges based on increases in the company's actual cost of fuel or other unexpected expenses.

CANCELLATION POLICY	
For 2015 Expeditions	
Number of Days Prior to Expedition Start	Per Person Cancellation Fee
120 or more days	\$350*
119-90 days	Advance payment cost
89-60 days	25% of total fare
59-45 days	50% of total fare
44-0 days	No refund
*350 will be refunded in the form of a Lindblad Expeditions Travel Certificate.	
<i>This cancellation policy applies to expeditions as well as pre- or post- extensions with the exception of Denali. The effective date of a cancellation will be the date on which your cancellation notice is received. Any revisions you make within the cancellation penalty period, such as departure date or choice of voyage, are subject to cancellation fees.</i>	
<i>Note: Airline cancellation policies vary by carrier, as well as the type of fare used to issue your ticket.</i>	
<i>Cancellation policy for certain longer voyages and Holiday departures may vary due to high demand for these voyages. Our group cancellation policy is listed in the Terms and Conditions section of our website, or you may call us for details. We stress the importance of purchasing a travel protection plan to protect yourself from fees in the event you need to cancel your reservation.</i>	
For Denali Extension	
\$550 deposit is due at time of booking the extension. Additional 60% of total cost is due on various dates, based on the departure date of your voyage. Final payment is due 90 days prior to departure.	
Number of Days Prior to Expedition Start	Per Person Cancellation Fee
120 or more days	\$550
119-90 days	60% Denali cost
89-0 days	100% of Denali cost

**Photo Credits:** Dave Bartruff, Tom Bean/Alamy, Linda Burbach, Marc Cappelletti, Stewart Cohen, Alexandra C. Daley-Clark, Michael DeFreitas North America/Alamy, Alberto Montaudon Ferrer, Jeff Foott, Mike Greenfelder, Justin Hofman, Ralph Lee Hopkins, Huna Totem Corp Images, Marca Kidwell-Babcock, Sven-Olof Lindblad, Michael Melford, Brad Mitchell/Alamy, Flip Nicklin, Michael S. Nolan, Dan Parrett/AlaskaStock, Gretchen Pederson, Douglas Peebles Photography/Alamy, Marco Ricca, Susan Seubert, Paul Souders/WorldFoto, Rikki Swenson, David Vargas

## JOIN OUR EXPEDITION COMMUNITY ONLINE



Lindblad Expeditions, as an Active Member of the United States Tour Operators Association ("USTOA"), is required to post \$1 Million with USTOA to be used to reimburse, in accordance with the terms and conditions of the USTOA Travelers Assistance Program, the advance payments of Lindblad Expeditions customers in the unlikely event of Lindblad Expeditions bankruptcy, insolvency or cessation of business. Complete details of the USTOA Travelers Assistance Program may be obtained by writing to USTOA at 275 Madison Avenue, Suite 2014, NY, NY 10016, or by e-mail to [information@ustoa.com](mailto:information@ustoa.com) or by visiting their website at [www.USTOA.com](http://www.USTOA.com).

We are proud to be a Founding Member of Adventure Collection – a family of the world's most trusted and experienced active travel companies. Each member company of Adventure Collection is dedicated to enriching the lives of its guests and to giving back to the areas in which it travels. For more information visit [www.AdventureCollection.com](http://www.AdventureCollection.com).

©2014 Lindblad Expeditions

Lindblad Expeditions and the Eye are the trademarks of Lindblad Expeditions. All rights reserved. Lindblad Expeditions is an equal opportunity employer and provider. NATIONAL GEOGRAPHIC and the Yellow Border are the trademarks of the National Geographic Society. All rights reserved.

**For Reservations: Contact your travel agent or Lindblad Expeditions**

**1.800.EXPEDITION  
(1.800.397.3348)**

**Reservation Hours:**

**Monday – Friday 9am – 8pm ET  
Saturday & Sunday 10am – 5pm ET**

**Lindblad Expeditions, Inc.  
96 Morton Street, New York, NY 10014  
Phone: 212.261.9000  
Fax: 212.265.3770**

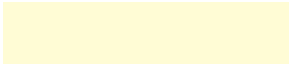
**email: [explore@expeditions.com](mailto:explore@expeditions.com)  
For additional information and online reservations, visit us on the Web: [www.expeditions.com](http://www.expeditions.com)**



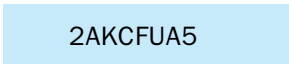
96 Morton Street  
New York, NY 10014

PRSR STD  
U.S. POSTAGE  
PAID  
LINDBLAD  
EXPEDITIONS

Account Number:



Expedition Code:



2AKCFUA5

**1.800.EXPEDITION | WWW.EXPEDITIONS.COM**

♻️ Printed on 10% recycled content paper with soy-based inks. We recommend that you pass this along for others to enjoy or recycle.

**AKC-085**

**FREE AIRFARE BETWEEN SEATTLE AND ALASKA ON SELECT MAY AND JUNE DEPARTURES. DETAILS ON PAGE 21.**

### SELECTED HONORS AND AWARDS

- » Conde' Nast Traveler's 2014 Readers' Poll – Top 20 Small Cruise Ships in the World, 2014
- » Condé Nast Traveler World Savers “Doing it All” Award, 2013
- » Condé Nast Traveler Readers' Choice Award-Top 25 Cruise Lines, 2013
- » Condé Nast Traveler “Gold List”, 2013, 2009, 2008, 2007, 2006, 2005
- » Virtuoso “Sustainable Tourism Leadership-Supplier” Award, 2013
- » Conservation Achievement Award for Corporate Achievement from National Wildlife Federation, 2008
- » Travel + Leisure “World's Best” Award for Small-Ship Cruise Lines, 2013, 2012, 2011, 2010, 2009, 2008
- » Travel + Leisure “World's Best for Families” Award for Small-Ship Cruise Lines, 2012, 2011, 2010, 2009
- » Cruise Critic Editor's Pick Awards “Best for Adventure,” 2013, 2012, 2011, 2010
- » Climate Champion Award to Sven Lindblad by Clean Air-Cool Planet, 2009
- » Conservation Achievement Award for Corporate Achievement from National Wildlife Federation, 2008
- » Tourism for Tomorrow “Global Tourism Business Award,” 2007

» GO TO [WWW.EXPEDITIONS.COM/AWARDS](http://WWW.EXPEDITIONS.COM/AWARDS) FOR AN EXTENDED LIST.

