

GALÁPAGOS

CELEBRATING

50 YEARS

WITH THE DEBUT
OF BRAND NEW
NATIONAL
GEOGRAPHIC
ENDEAVOUR II



Lindblad
Expeditions



NATIONAL
GEOGRAPHIC™



The Lindblad clan bid a fond farewell to the beloved expedition ship National Geographic Endeavour. They explored Galápagos with fellow photo enthusiasts and other guests—hiking, kayaking, snorkeling, and new to Galápagos, paddleboarding.

*Cover: Up-close with sea lions.
© Jacob Riglin
Ships' registry: Ecuador*





DEAR TRAVELER,

2017 will be an exciting year for us, and more broadly, for our guests, and for Galápagos.

It will be the 50th anniversary of my father's pioneering voyage there with the first organized group of citizen explorers. And, it is the year we inaugurate a new ship in the islands—*National Geographic Endeavour II*—embodying decades of knowledge about experiencing the unique Galápagos environment. (On a personal note: The photos you see at left are from this summer's trip with my family—to say our farewell to the beloved *Endeavour*, retiring in 2017 when *Endeavour II* takes over.)



And significantly, 2017 will be a year in which final details of a monumental decree will be formally adopted—a full third of the Galápagos Marine Reserve becomes a no-take zone—ensuring a return to full natural productivity for this already rich marine ecosystem.

I have been doing a lot of interviews recently about Galápagos and am often asked:

1. *Is Galápagos getting spoiled by growth?* The Galápagos National Park, over 95% of the total land mass, is remarkably well managed. No more than a certain number of visitors are allowed at a site at once. You see virtually no debris, plastic, and such; our naturalist guides are, in fact, representatives of the National Park, and astute in ensuring that visitors have an engaging experience while not disturbing wildlife.
2. *What do you personally find so compelling about Galápagos?* There is no place on the planet that provides such daily wonder for anyone interested in nature. All the animals, birds, and fish live a life absent of fear. They view us as just another species to be ignored or, in the case of some like the sea lions, engaged in some fashion, as they seem to enjoy the company—at least that's what I've felt on each of my innumerable encounters.
3. *Is there a lot more competition these days?* Yes, and a lot of it focuses on the idea of luxury—a word I'm quite reluctant to use. Fifty years in Galápagos has taught us that what matters to people is the in-depth ability to optimize all that Galápagos offers; a level of service, built over decades, that understands needs and wants, plus comfort; and an expedition team that is knowledgeable, compassionate, and aware.

At the end of the day, I would unhesitatingly advise any potential traveler that visiting the Galápagos is a very good idea. And that doing so with us is the right choice. It's not hubris, it's 50 years of learning, a deep and abiding love for the place, and a profound respect for our guests and their aspirations.

All the best,

Sven-Olof Lindblad

Celebrate the inaugural season of *National Geographic Endeavour II* with **FREE AIR** on all weekly departures January 6 to March 31, and select departures during our 50th Anniversary year. See pages 14-15 for all our offers.

IN LOVE WITH GALÁPA

In 1967 Lars-Eric Lindblad filled a couple of suitcases with Chilean pesos, headed to Valparaiso, chartered the *Navarino*, a ship he described as “no frills, but comfortable,” then cruised to Lima to embark his guests—for the first citizen explorer expedition to Galápagos, offered by his pioneering company, Lindblad Travel.



Lars-Eric Lindblad.

They were accompanied by a “Who’s Who” staff, and guests and luminaries alike experienced the wonders of Galápagos together. In his autobiography *Passport To Anywhere*, Lars-Eric concludes his chronicle of the inaugural expedition with this: “*There were so many fascinating things that I immediately began planning 14-day cruises for the future.*”

And that is what we are honoring as we celebrate our **50th Anniversary in Galápagos in 2017**—a commitment to a sustainable, meaningful, and impactful Galápagos guest experience, imagined by Lars-Eric Lindblad in 1967, and dramatically advanced by Sven Lindblad ever since—worldwide.

GOS—FOR 50 YEARS

Everything that matters to us as a company was established then: environmentally important and sensitive destinations; a focus on wildlife; ships as base camps; the most knowledgeable and insightful staff; Zodiacs for up-close explorations, plus snorkel gear, kayaks, and in 2017, stand-up paddleboards; in-depth itineraries that optimize your experience; and most importantly, the sense of a meaningful, personal connection to the place.

Lars-Eric knew instinctively that tourism would be the key to conservation in Galápagos, and he supported both the Charles Darwin Foundation and Galápagos National Park Service from the very beginning. He funded a two-year study by Dr. Michael Harris that was the first modern survey of birds, and among the seminal studies of the impact of tourism on Galápagos. And he not only provided financial backing for Juan Black and José Villa, the first Galápagos National Park Service officials, he even paid their salaries.

Sven Lindblad deepened his commitment to Galápagos in 1997 by basing our first ship year-round in the islands, and playing an even greater role in conservation. And, in 2008, he established the Lindblad Expeditions-National Geographic Fund as an evolution of those efforts. Guests aboard our ships in Galápagos have donated \$7.5 million to support conservation, education, research, and community development throughout the archipelago. We have a deep connection to these islands, and we connect you—and that unique sense of connection transforms your experience. Fifty years in, our love affair with Galápagos continues. Experience Galápagos with us, and we believe you'll love it too.

» INTERESTED IN CONSERVATION? LEARN ABOUT OUR EFFORTS AT [EXPEDITIONS.COM/GALACONSERVATION](https://www.expeditions.com/galaconservation)

» ENJOY READING? *PASSPORT TO ANYWHERE* IS FUN! DOWNLOAD A COMPLIMENTARY E-COPY AT [EXPEDITIONS.COM/PASSPORT](https://www.expeditions.com/passport)

A waved albatross is captured in mid-flight, soaring across a clear blue sky. The bird's wings are fully extended, showing dark feathers on the upper side and lighter feathers on the underside. Its head is turned slightly to the right, revealing a white face and a prominent yellow beak. Below the bird, a rugged coastline of dark, jagged volcanic rock meets the ocean. The waves are a vibrant turquoise color, crashing against the base of the cliffs and creating white foam. The background shows a hazy, green landscape under a bright sky.

EXPLORE & EXPERIENCE THE BEST OF GALÁPAGOS

Waved albatross takes flight.

SAILING TWICE WEEKLY, ALL YEAR LONG

Located at the equator, Galápagos is always in season. And with two expedition ships operating year-round with weekly departures on Fridays and Saturdays, you're guaranteed to find a departure date that fits your travel schedule.



THE BEST UNDERSEA EXPERIENCE—WET OR DRY

We are deeply invested in enhancing your understanding of Galápagos' vibrant undersea, so you'll have the opportunity to snorkel almost every day, sometimes two times a day. And snorkeling in Galápagos is a ton of fun! It means encountering sea turtles, sea lions, and penguins, too. Prefer to stay dry? You can peer beneath the surface from the comfort of our glass-bottom boat (*National Geographic Endeavour*) or glass-bottom Zodiac (*Endeavour II*). And we are the only company in Galápagos with an undersea specialist on staff assigned to capture underwater video, and present it on the lounge's plasma screens during our lively recap cocktail hour, to ensure that every guest can enjoy the world beneath the ship.



The glass-bottom Zodiac provides perfect viewing opportunities for guests interested in staying dry.

▶ EXPLORE THE UNDERSEA AT
[EXPEDITIONS.COM/GALAUNDERSEA](https://www.nationalgeographic.com/expeditions.com/galaundersea)

See schools of angelfish and search for sea turtles while snorkeling.



We carry complete gear—wetsuit, fins, mask, snorkel, and snorkel buoyancy vests for all guests (kid sizes too)—so you can skip lugging your own and forget any worries about weight restrictions. And the gear you select at the beginning of the expedition remains yours for the duration. Easy!



SEE & DO MORE WITH THE BEST TEAM

Our Galápagos expedition team, hand-picked and Lindblad Expeditions-trained, is made up of engaging naturalists born and bred in the Galápagos Islands, and naturalists who moved to the islands from the mainland or other countries over 20 years ago. They live and breathe Galápagos, and are passionate about the nature and conservation of this remote archipelago. They each have a deep understanding of all aspects of Galápagos' natural and human history, and are experts in relevant areas: ornithology, geology, zoology, and the undersea.



Paula Tagle.



Walter Perez photographs a mockingbird up close on Hood Island.

PAULA TAGLE

Expedition leader & naturalist.

Paula grew up in the city of Guayaquil. After completing her degree in geology, she worked in different parts of Ecuador, including Galápagos. After completing her master's in quaternary geology, she eagerly returned to Galápagos, a mecca for geologists. Bewitched by the other wonders of the islands, Paula delights in interpreting and creating an in-depth experience for our guests.

WALTER PEREZ

Naturalist & certified photo instructor.

Walter was born in a very small town on the mainland of Ecuador. His first trip to the Galápagos was when he was 12 years old, visiting friends and an aunt, who had moved to the islands. From the first moment he saw the islands, he fell in love and decided where his future home would be.



*Clockwise from top left:
Carlos Romero, Aura
Banda Cruz, Jonathan
Aguas, Jason Heilmann,
Juan Carlos Avila.*

CARLOS ROMERO

Expedition leader, naturalist & certified photo instructor.
Raised amid the biodiversity of Venezuela and Ecuador, Carlos was fascinated by tropical ecology at an early age. He holds a doctorate in biology and a master's in ecotourism and natural protected areas management.

JUAN CARLOS AVILA

Expedition leader, naturalist & certified photo instructor.
Juan Carlos spent his early years in the natural exuberance of the Cotopaxi region of Ecuador. At the age of twelve, his family moved to Santa Cruz, Galápagos. His islands knowledge is bone-deep.

AURA BANDA CRUZ

Naturalist, certified photo instructor & undersea specialist.
Aura's grandparents were among the earliest settlers in the Galápagos in the 1930s—her mother was born on Floreana Island. Aura's childhood was spent among the finches and swimming with sea lions.

JONATHAN AGUAS

Naturalist & certified photo instructor.
Jonathan's family dates back five generations on San Cristóbal Island, Galápagos. He left the islands on a scholarship to finish his bachelor's degree in integrative biology in the U.S. His science training and keen eye for beauty enable him to help guests observe and capture.

JASON HEILMANN

Naturalist, certified photo instructor & undersea specialist.
Jason grew up in the lush Pacific Northwest. While attending university there, he met an Ecuadorian woman. Following her home, he found himself in the Galápagos Islands. He's been a trained naturalist here since 1999.

▶ **LEARN MORE ABOUT THEIR BACKGROUNDS & EXPERTISE AT [EXPEDITIONS.COM/GALATEAM](https://www.expeditions.com/galateam)**



THE BEST CHOICE FOR FAMILIES

Your family will see, do, and learn more by exploring Galápagos with experts who know it best. And your kids or grandkids will benefit from our onboard program; it enables kids to harness their enthusiasm and earn distinction (and a certificate!) as a **Junior Naturalist**, meet other kids, and participate in activities that engage their minds and hearts:



✓ Connect with nature

See what happens when kids disconnect from tech and have direct contact with wildlife & wonders. With no screens to intervene, you'll re-discover each other on the voyage, too

✓ Get certified to drive

Kids learn to drive a Zodiac and earn a "certificate of achievement"

✓ Learn by doing

- Kids observe the natural world through the camera's lens & improve their photo skills with our certified photo instructor
- Observe the behavior of endemic creatures like marine iguanas up-close or use the onboard video microscope to see life in miniature, in naturalist-led sessions
- Keep an expedition journal to preserve all the new, enriching experiences—write, draw, paint, or paste in photos to link art & science





✓ Give back

Kids can contribute in Galápagos by donating their favorite book, in English or Spanish, to the Tomás de Berlanga School while it's in session, where they meet other kids who are learning in a unique open-air school context, connected to the natural world

✓ Have fun

Kid-friendly menu options, stargazing, a scavenger hunt, and a special pizza & movie night, plus new friends & the relative autonomy of shipboard life make our expeditions popular with kids of all ages

When *National Geographic Endeavour II* begins exploring Galápagos in 2017, families will have even more to get excited about: 14 of her cabins connect (in three different cabin categories; see page 21), to make family togetherness more convenient and comfortable. Interested in traveling with other families? This convenient chart makes peak family periods clear.

WHAT PERCENTAGE OF GUESTS ARE UNDER 18?	
JANUARY	4%
FEBRUARY	5%
MARCH	20%
APRIL	12%
MAY	4%
JUNE	25%
JULY	29%
AUGUST	22%
SEPTEMBER	2%
OCTOBER	3%
NOVEMBER	6%
DECEMBER	21%

**Planning family travel?
Take \$500 off per child—
see page 24 for details.*



TAKE YOUR BEST PHOTOS EVER—IN

Does Galápagos offer the best photo ops on Earth? Well, it is the rare place where wild animals display remarkable behavior right in front of you, so close you don't even need a zoom lens. And they exhibit no fear at all, in fact, calmly sitting still for portraits. Try that in the Serengeti! And the Lindblad-National Geographic certified photo instructors aboard our ships are not only skilled photographers—trained to help you understand your camera and improve your skills—they're naturalists. That means they can explain the animal's behavior so you can better predict and capture the perfect moment of wild behavior or arresting beauty.



Don't think you're a photographer? Photography aboard our ships is so engaging, so much fun that nearly everyone gets caught up in infectious "aim & create" activity. You'll go home with photos you'll be proud to share.

Below: The ubiquitous, charming Galápagos sea lions make the perfect subjects for photographers.



THE BEST PLACE FOR PHOTOGRAPHY



PASSIONATE ABOUT PHOTOGRAPHY? GREAT NEWS!

There's still time! A few spots are left on the December 2, 2016 Epic Photo Expedition—with a **FREE 2-day Photo Workshop** at the Hilton Colón Hotel in Guayaquil pre-voyage, plus **free round-trip air** from Miami and a **\$300 business class upgrade**. If you can, do grab this chance; the talent line up is incredible. For details visit expeditions.com/epicphoto



Lindblad
Expeditions



NATIONAL
GEOGRAPHIC™

Lindblad Expeditions and National Geographic have joined forces to further inspire the world through expedition travel. Our collaboration in exploration, research, technology and conservation will provide extraordinary travel experiences and disseminate geographic knowledge around the globe.

MORE PHOTO EXPEDITION OPPORTUNITIES IN 2017



NATIONAL GEOGRAPHIC

On select 10-day departures, we add the services of top National Geographic photographers—the ones who shoot the magazine stories we all know and love—to give photo enthusiasts an exclusive advantage.

▶ MEET THE FULL EXPEDITION TEAM AT
EXPEDITIONS.COM/GALATEAM



JONATHAN KINGSTON

Since 2002, Jonathan has traveled the globe collecting images of the natural world, tribal dances, and underwater vistas. He also teaches Lightroom & Photoshop in post-production classes. Feb. 3 & 10, *National Geographic Endeavour II*



MASSIMO BASSANO

Massimo once took a three-month vow of silence to shoot an Italian monastery, which led to his acclaimed photo book, *The Color of Silence*. Learn his secrets to shooting off the beaten path. Apr. 21 & 28, *National Geographic Endeavour II*



NEW! Join our first-ever Photo Expeditions in the Upper Amazon with National Geographic photographer Jonathan Irish on March 18 or 25, 2017. Learn more at expeditions.com/amazonphoto

EXCLUSIVE INCENTIVES + IN

CELEBRATE OUR INAUGURAL WITH FREE ROUND-TRIP AIR on all departures this first season, January 6 to March 31, 2017 on *National Geographic Endeavour II*. Save \$1,300 per guest on the cost of both international air from Miami, and the flight from Guayaquil to Galápagos. And take advantage of free air on select departures on both ships throughout our full 50th anniversary year. See page 24 or call for details.

MAKE THE MOST OF YOUR TIME IN THE REGION AND SAVE Combine your Galápagos expedition with either a voyage to the Upper Amazon (page 19) or a trip to Machu Picchu & Peru's Land of the Inca (page 18) and receive **FREE ROUND-TRIP AIR** from Miami during our January 6 to March 31 *Endeavour II* inaugural season, and on select departures throughout 2017. Plus, **SAVE 10%** when you combine your Galápagos voyage with an Upper Amazon voyage.

TAKE THE KIDS & SAVE \$500 Share the wonder of Galápagos with kids under 18 and take \$500 off the double occupancy rate per kid. Our triple cabins and suites book quickly so act fast.

BRING FAMILY OR FRIENDS Like to explore with like-minded others, or want to bring the whole clan? **SAVE 5%** when traveling as a group of 8 or more—whether it's your friends, book club, member organization, or extended family. Private charters are also available.

NO EXTRA CHARGES FOR ACTIVITIES—EVER All the daily activities—from Zodiac explorations to kayaking, hiking, and snorkeling—and all shore activities are included in the price. And the ship carries complete snorkeling gear (wet suit, mask, snorkel, fins) so no need to tote yours and risk baggage charges.

INCLUDED

- ✓ Meals on board and on land, as indicated in itinerary
- ✓ Special access permits, park fees, port taxes
- ✓ Round-trip airport to hotel transfers for group flights
- ✓ Two nights hotel accommodation at the Hilton Colón Guayaquil
- ✓ Access to the VIP lounge at Baltra Airport in Galápagos



EXCLUSIVE PRICING

NO CHARGE FOR THE BEST EXPERTS IN THE ISLANDS

The knowledgeable guidance and company of our expedition staff, plus all lectures and presentations, and daily recaps and briefings are open to all and included in the price.

AND FREELY ENJOY THE FOLLOWING ABOARD SHIP

- ✓ Daily stretching class with wellness specialist
- ✓ Mac computers for downloading your camera's memory card
- ✓ Fitness Center with elliptical, treadmill, stationary bicycle, free weights, bands & more
- ✓ Access to navigational bridge
- ✓ Services of an onboard doctor
- ✓ All meals—from breakfast, lunch & dinner in the dining room, to outdoor BBQs, hors d'oeuvres & snacks during daily recap, tea-time cookies and all-day fruit
- ✓ All non-alcoholic beverages including unlimited cappuccinos, latte, coffee, tea & soda
- ✓ Complimentary refillable water bottle

The only things not included are those of a personal nature—alcohol, Internet usage, gratuities, wellness treatments, global gallery purchases, and specialized arrangements.

LAST CHANCE TO SAVE IN 2016

Save \$1,300 per guest with **FREE ROUND-TRIP AIR** from Miami, and the flight from Guayaquil to Galápagos on select departures through Dec. 10, 2016. **UPGRADE TO BUSINESS CLASS** for just \$300 on select departures through Dec. 10, 2016. Take advantage of 15% **SAVINGS FOR SOLO TRAVELERS** aboard *National Geographic Endeavour* through Nov. 18, 2016—a \$1,250 to \$1,840 bonus savings on standard solo cabin rates. **TAKE \$1,500 OFF FOR KIDS OR GRANDKIDS** under 18 aboard *National Geographic Endeavour* through Nov. 18, 2016. See page 24 or call for details.



Above: The galley crew serves a traditional Ecuadorian lunch on every voyage. Below: Pinnacle Rock, Bartolomé Island.



GALÁPAGOS

10 DAYS/9 NIGHTS—ABOARD *NATIONAL GEOGRAPHIC ENDEAVOUR**, *NATIONAL GEOGRAPHIC ENDEAVOUR II*, AND *NATIONAL GEOGRAPHIC ISLANDER*

DATES: 2016 & 2017: Expeditions depart Fridays on the *National Geographic Endeavour/Endeavour II* and Saturdays on the *National Geographic Islander*.

PRICES FROM: \$6,590 to \$14,160 (See pages 20-23 for complete prices.)

• INAUGURAL SEASON FREE ROUND-TRIP AIR

All departures Jan. 6-Mar. 31 aboard *National Geographic Endeavour II*, from Miami to Ecuador and on to Galápagos. Free air is also available on select departures aboard both ships throughout 2017.

• MAKE THE MOST OF YOUR TIME & SAVE

Combine your Galápagos expedition with either a voyage to the Upper Amazon (page 19) or a trip to Machu Picchu & Peru's Land of the Inca (page 18) and receive free round-trip air from Miami during our Jan. 6–Mar. 31 *Endeavour II* inaugural season, and on select departures throughout 2017. Plus, save 10% when you combine your Galápagos voyage with an Upper Amazon voyage.

• TAKE THE KIDS & SAVE \$500

Share the wonder with kids or grand-kids under 18 and take \$500 off the double occupancy rate per kid. See page 24 or call for offer details.

EXPEDITION HIGHLIGHTS

- ▶ Snorkel amid shimmering fish, sea turtles, penguins, and playful sea lions
- ▶ Walk among colonies of wildlife and birds unfazed by your presence
- ▶ Observe giant Galápagos tortoises in the wild
- ▶ Explore the waters of the Galápagos by kayak, glass-bottom boat, Zodiac, or paddleboard

EXPERIENCE & EXPERTISE

50
YEARS
EXPERIENCE

We're celebrating 50 years of exploring Galápagos. We've introduced generations of travelers to its magic and mystery. We're committed to Galápagos; and have raised millions, along with our guests, for its conservation. And we're fully invested, too; we operate two ships based there year round. An expedition leader, our team of naturalists, a Lindblad-National Geographic certified photo instructor, undersea specialist, wellness specialist, and video chronicler all contribute to your experience of the wonders of Galápagos.

Visit our website to read staff bios.

Blue-footed boobies.



GALÁPAGOS + MACHU PICCHU & PERU'S LAND OF THE INCA

16 DAYS/15 NIGHTS—ABOARD NATIONAL GEOGRAPHIC ENDEAVOUR/ENDEAVOUR II AND NATIONAL GEOGRAPHIC ISLANDER

PRICES FROM: \$12,080 to \$21,960 (See pages 20-23 for complete prices.)

EXPEDITION HIGHLIGHTS

- ▶ Walk and snorkel among the abundant and fearless wildlife of Galápagos
- ▶ See daybreak over the ruins at Machu Picchu from the fabled Sun Gate
- ▶ Discover Cusco's varied influences and visit the Sacred Valley of the Inca

DAYS 1-8: AS PER GALÁPAGOS ITINERARY ON PAGES 16-17.



Machu Picchu.

DAY 9: GALÁPAGOS/GUAYAQUIL/ LIMA, PERU

Depart Galápagos this morning and fly to Lima, Peru via Guayaquil, arriving in the evening. Overnight at the comfortable and conveniently located Wyndham Costa del Sol Lima Airport Hotel. (B,L)

DAY 10: LIMA/CUSCO/SACRED VALLEY OF THE INCA

Fly to Cusco then drive to Moray, a stunning Inca site believed to have been an agricultural laboratory where Incan priests would test soils and crops. Lunch at Parador Moray, overlooking the ruins. En route to the hotel, walk through a typical local market before an optional visit to the pottery studio Pablo Seminario, featuring ceramics made with ancient Peruvian techniques and designs. Check into Sol y Luna Hotel. (B,L,D)

DAY 11: SACRED VALLEY OF THE INCA

Visit the massive Inca stone fortress of Ollantaytambo. Lunch is at Casa Orihuela, a

working, family-owned hacienda, then visit the family's private museum. See a Peruvian Paso horse demonstration, with Marinera dancers and live music. Attend a traditional weaving demonstration by National Geographic grantee Nilda Callañaupa. After dinner at the hotel, see a folkloric dance performance. (B,L,D)

DAY 12: SACRED VALLEY/MACHU PICCHU

Enjoy the views from the valley to Machu Picchu via train with large picture windows. Spend the day exploring Machu Picchu's extraordinary structures with your guide. Overnight at the historic 31-room Belmond Sanctuary Lodge set next to the archaeological site. (B,L,D)

DAY 13: MACHU PICCHU/CUSCO

Hike to the Sun Gate this morning, the ancient final checkpoint to Machu Picchu, and watch daybreak over the sacred ruins. Explore Machu Picchu on your own or with your guide. After a train and bus ride, visit Awanacancha, where llamas, alpacas, and vicuñas are bred. En route to Cusco, we'll stop for photos at Plaza San Cristobal, which offers sweeping views of colonial Cusco. Check into the Belmond Monasterio Hotel for two nights. (B,L,D)

DAY 14: CUSCO

Explore the Inca Empire's capital city of Cusco and visit the magnificent 17th-century cathedral and convent of Koricanca, and the vast Sacsayhuaman fortress, a UNESCO World Heritage site. This afternoon is at leisure to discover the city. Dinner is on your own. (B,L)



Cusco Cathedral.

DAY 15: CUSCO/LIMA

Return to Lima and visit the Larco Herrera Museum and stroll the Plaza Mayor. Lunch is in traditional Latin American style. Experience the music of the Andes at a presentation of indigenous instruments. Dinner is on your own. Overnight at the Belmond Miraflores Park Hotel. (B,L)

DAY 16: LIMA/U.S. (B)

EXPEDITION DETAILS

DATE: Year-round, weekly departures following Galápagos aboard *National Geographic Endeavour/Endeavour II* and *National Geographic Islander*.

NATIONAL GEOGRAPHIC EXPERT

Gain insights from National Geographic historian **Peter Frost** (or a colleague) on our Machu Picchu & Peru's Land of the Inca departures.

SPECIAL OFFERS:

Book now and receive **free round-trip air** from Miami to Galápagos & Peru during our inaugural season Jan. 6-Mar. 31, 2017 aboard *National Geographic Endeavour II* and on select departures throughout our celebratory year, a savings of \$2,250 per guest. Please see page 24 or call for details.

Take advantage of your proximity and save—extend this **Galápagos + Machu Picchu & Peru's Land of the Inca** journey with an **Upper Amazon** expedition (page 19), receive **free round-trip air** from Miami on select departures and **save 10%**. Please call for details.

GALÁPAGOS + UPPER AMAZON

20 DAYS/19 NIGHTS

DEPARTURE: Combine a Galápagos expedition with Upper Amazon on a number of our 2016 & 2017 departures. Prices from \$13,950 per person, double occupancy. Please call for details.

EXPEDITION HIGHLIGHTS

- ▶ Walk and snorkel among the abundant, iconic Galápagos wildlife that is unfazed by your presence
- ▶ Hike pristine islands, kayak their peaceful shorelines, and explore the Galápagos undersea
- ▶ In the Amazon, discover an entirely different kind of biodiversity—macaws, monkeys, sloths, and more, plus meet the ribereños—inhabitants of the jungle we explore

DAYS 1-8: PER GALÁPAGOS ITINERARY ON PAGES 16-17.

DAY 9: GALÁPAGOS/GUAYAQUIL/LIMA, PERU

Depart Galápagos this morning and fly to Lima, Peru via Guayaquil, arriving in the evening. Overnight at the conveniently located Wyndham Costa del Sol Lima Airport Hotel. (B,L)

DAY 10: LIMA/IQUITOS/NAUTA/EMBARK

Enjoy a morning tour of Lima, then fly to Iquitos and continue overland to the riverside village of Nauta, where the *Delfin II* awaits. Settle into your cabin, and gather for a welcome dinner of fine Peruvian cuisine on board. Tonight, step out on deck to gaze at the magnificent Amazon night sky. (B,L,D)

DAYS 11-18: PACAYA-SAMIRIA NATIONAL RESERVE

Spend this week exploring the Pacaya-Samiria National Reserve, a pristine swath of jungle—one of the largest in South America—stretching

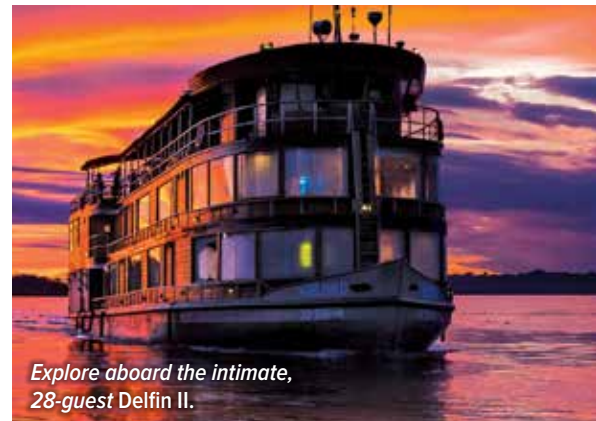


Blue and yellow macaw in flight.

more than five million acres, and harboring some of the Amazon's most fascinating flora and fauna. Bordered by the Marañón and the Ucayali, two powerful rivers that converge to create the famed Amazon, which floods annually with nutrient-rich waters. The Pacaya-Samiria rivers are known locally as the Mirrored Forest for the reflections created by the glassy water.

Set out into this remarkable wilderness on daily excursions by skiff, kayak, and, when the water level permits, hikes on terra firma. Skim past giant lily pads afloat on black-water lakes, and venture deep into the rain forest on narrow tributaries. Spot sloths and monkeys, including variably colored saddleback tamarins, noisy howlers, and shaggy-tailed monk saki monkeys. Watch for an astounding variety of birds, from tanagers and hummingbirds to parrots and endangered scarlet macaws. In the river, look for massive *paiche* fish, the Amazon's largest.

Enjoy an opportunity to swim in a lake in the reserve's interior. Seek out *Victoria amazonica*, a giant water lily that grows in small lagoons. Go on a bird-watching hike, listening for the vocal oropendola and then look for its telltale yellow tail. Watch the sun set and listen to a cacophonous symphony of nocturnal animals calling out across the treetops. Then slip through the forest in a skiff as night falls, using a spotlight to find caimans, frogs, fishing bats and other creatures of the night.



Explore aboard the intimate, 28-guest Delfin II.

Pay a visit to communities on the reserve's edge, and meet the Amazon ribereños in their dugout canoes, and in their stilt-home villages. One of the unexpected joys of this region is our interaction with local people. Engage with women, men, and youth eager to share their community improvement projects, many of them supported by the Lindblad-National Geographic Fund and our local partner, Minga Peru. (B,L,D)

DAY 19: NAUTA/IQUITOS/LIMA

Enjoy one last morning excursion by skiff to view wildlife. After lunch, disembark in Nauta, and return to Iquitos overland for a late-afternoon flight to Lima, and overnight at the Wyndham Costa del Sol Lima Airport Hotel. (B,L)

DAY 20: LIMA/U.S.

After breakfast, transfer to the airport for your flight home. (B)

SPECIAL OFFERS:

Book by Dec. 31, 2016 and add a **free two-day Taste of Lima extension**. Explore the culinary and cultural delights of this vibrant city with the fashionable Belmond Miraflores Park as your base. **OR choose to take a \$500 voyage credit instead.** Select 2017 departures.

Book now and receive **free round-trip air** from Miami to Galápagos & the Amazon during our inaugural season Jan. 6-Mar. 31, 2017 aboard *National Geographic Endeavour II* and on select departures throughout our celebratory year, a savings of \$2,250 per guest. Plus **save 10%** when you combine your Galápagos voyage with an **Upper Amazon** voyage. Please see page 24 or call for details.

NEW SHIP



NATIONAL GEOGRAPHIC ENDEAVOUR II

OUR NEWEST SHIP IN GALÁPAGOS

CAPACITY: 96 guests in 52 outside cabins.

REGISTRY: Ecuador. **OVERALL LENGTH:** 236 feet.

PUBLIC AREAS: New forward lounge and bar accommodating all guests for presentations and gatherings, restaurant, large library with Mac kiosks, open-air observation deck, underwater gear area and dual Zodiac boarding platform, and open bridge, where guests can meet the captain and officers and learn about navigation. Ship refitted for Galápagos in 2016.

MEALS: Served in a single, unassigned seating in a sociable, informal atmosphere with Ecuadorian flair.

CABINS: All face outside with large windows, and feature twin beds that convert to a queen. With private facilities and climate control, nightstands, desk, and storage. Seven sets of cabins with a connecting door.

EXPEDITION EQUIPMENT: Nine Zodiacs, including one with a glass-bottom, kayaks and paddleboards, snorkel gear and wet suits for both adults and children, video microscope and underwater video camera.

SPECIAL FEATURES: Shipboard doctor, LEX-NG certified photo instructor, video chronicler, snorkel instruction. Wi-Fi access, laundry service, Global Gallery.

WELLNESS: New LEXspa and fitness center, exercise classes, and wellness specialist.



Clockwise from top: National Geographic Endeavour II will feature 52 cabins accommodating 96 guests; the new lounge's panoramic windows ensure stunning Galápagos views; artist rendering of a typical Category 4 cabin.



CATEGORY 1: Upper Deck, Forward #201, 202

CATEGORY 2: Upper Deck #211, 213-219, 221, 222, 224-229

CATEGORY 3: Lounge Deck #311, 313-319, 321, 322, 324, 326, 328, 330

CATEGORY 4: Bridge Deck #409, 411-414, 416, 418

SUITE A: Lounge Deck, Mid-Ship #320—with two windows, larger bath, armchair. Connecting door to #322.

SUITE B: Bridge Deck, Mid-Ship #420, 422—with two floor-to-ceiling windows, larger bath, convertible sofa for a third person.

SUITE C: Bridge Deck, Mid-Ship #415—with two large windows, larger bath, separate sitting area with convertible sofa for a third person and armchairs, largest cabin on ship.

CATEGORY 2 SOLO: Upper Deck #203-209—with a queen bed.

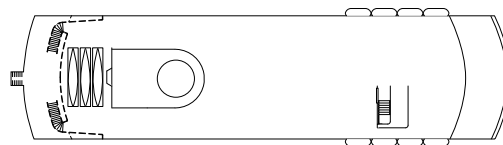
CATEGORY 3 SOLO: Lounge Deck #325, 327—with a queen bed.

NOTE: All cabins feature the option of two twins or a queen bed, plus large window(s), desk, chair, and closet.

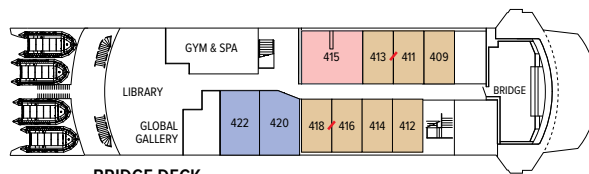
CONNECTING CABINS: #226/228, 227/229, 315/317, 316/318, 320/322, 411/413, 416/418

TRIPLE OCCUPANCY: #224, 225, 326, 328 with fold down third bed, Suites B and C with convertible sofa bed. Third person rates are one-half per person double occupancy rate.

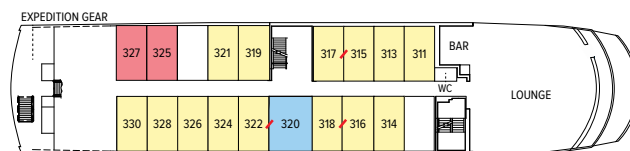
SHARED ACCOMMODATIONS: Shares can be arranged at the double occupancy rate in Categories 1 and 2.



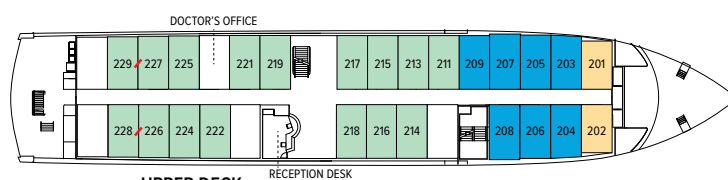
OBSERVATION DECK



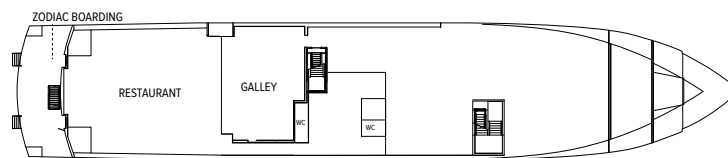
BRIDGE DECK



LOUNGE DECK



UPPER DECK



MAIN DECK

↗ indicates adjoining cabins

*The new National Geographic Endeavour II sails in January 2017, replacing the National Geographic Endeavour on the same itineraries. Call or visit expeditions.com/GalaShips for the last chance to travel aboard the Endeavour in 2016 (limited availability). Prices start at \$6,590 per person, double occupancy in 2016.

Prices are per person, double occupancy unless indicated as solo.

ITINERARY	CAT. 1	CAT. 2	CAT. 3	CAT. 4	SUITE A	SUITE B	SUITE C	CAT. 2 SOLO	CAT. 3 SOLO	ADVANCE PAYMENT	NOTE
2017 GALÁPAGOS: ABOARD NATIONAL GEOGRAPHIC ENDEAVOUR II—PAGE 16											
Jan. 6 - Dec. 15	\$6,960	\$7,940	\$8,740	\$9,590	\$11,440	\$12,280	\$12,980	\$9,930	\$10,930	\$750	International and internal Ecuador tickets must be issued separately for all Galápagos voyages. Sample International Airfares: round-trip Miami/Guayaquil: Economy from \$500; Business from \$800. Sample Internal Airfares: Guayaquil/Galápagos: Adults from \$520; Children (under 12) from \$260. Call for sample Peru airfare.
Holiday: Dec. 22, 29	\$7,780	\$8,880	\$9,780	\$10,720	\$12,810	\$13,760	\$14,530	\$11,120	\$12,240	\$1,000	
2017 GALÁPAGOS + MACHU PICCHU & THE LAND OF THE INCA—PAGE 18											
Jan. 6 - Dec. 8	\$12,650	\$13,630	\$14,430	\$15,280	\$17,130	\$17,970	\$18,670	\$17,000	\$18,000	\$1,500	
Dec. 15	\$13,380	\$14,360	\$15,160	\$16,010	\$17,860	\$18,700	\$19,400	\$17,730	\$18,730	\$1,500	
Holiday: Dec. 29	\$14,200	\$15,300	\$16,200	\$17,140	\$19,230	\$20,180	\$20,950	\$18,920	\$20,040	\$1,500	
2017 EPIC GALÁPAGOS PHOTO EXPEDITION ABOARD NATIONAL GEOGRAPHIC ENDEAVOUR II											
Nov. 24	\$13,920	\$15,880	\$17,480	\$19,180	\$22,880	\$24,560	\$25,960	\$19,860	\$21,860	\$1,500	

Please call for Galápagos + Upper Amazon pricing, including the 10% back-to-back savings and free airfare offer.



NATIONAL GEOGRAPHIC ISLANDER

YACHT-SCALED AND TRIM

CAPACITY: 48 guests in 24 outside cabins.

REGISTRY: Ecuador. **OVERALL LENGTH:** 164 feet.

PUBLIC AREAS: Open-air observation deck, second covered outside deck with hammocks, tables and chairs. Lounge and bar accommodating all guests for presentations and gatherings, dining room, library, Mac kiosks and Internet. The captain and officers welcome guests to visit the open bridge.

MEALS: Served in a single, unassigned seating in a sociable, informal atmosphere with Ecuadorian flair.

CABINS: All have a window with an outside view, private facilities, ample storage and climate controls. Bed can be configured as two twins or as a single queen.

EXPEDITION EQUIPMENT: Zodiacs, a fleet of kayaks and paddleboards, snorkel gear and wet suits for both adults and children, video microscope and underwater video camera.

SPECIAL FEATURES: Shipboard doctor, LEX-NG certified photo instructor, video chronicler, snorkel instruction. Wi-Fi access, laundry service, Global Gallery.

WELLNESS: New LEXSpa and fitness center, exercise classes, and wellness specialist.



Insets clockwise from top: Our hospitality staff is at your service and an integral part of your expedition; Category 4 cabin; Category 5 cabin.

CATEGORY 1: Main Deck, Forward #201-206

CATEGORY 2: Main Deck #207-210

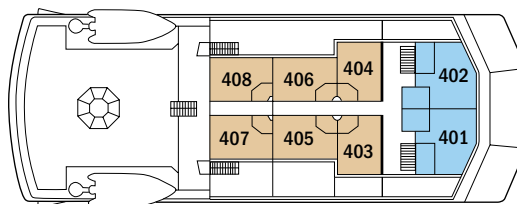
CATEGORY 3: Bridge Deck #303-306. Cabins 305 and 306 can accommodate a third person.

CATEGORY 4: Upper Deck #403-408—with outside, glassed-in terraces with windowed door and seating.

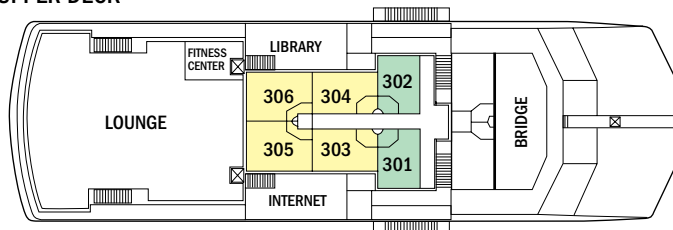
CATEGORY 5: Upper Deck, #401 and 402—forward facing with additional seating, desk, wrap-around windows, glassed-in terrace with seating. Largest cabins aboard.

NOTE: All cabins offer two twin beds that can be converted to a queen. Sole occupancy in categories 1 and 2 only. Third person rates for cabins 305 and 306 are one-half per person double occupancy rate.

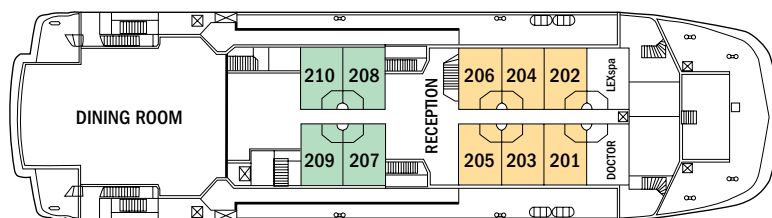
SHARED ACCOMMODATIONS: Shares can be arranged at the double occupancy rate in Categories 1 and 2 only.



UPPER DECK



BRIDGE DECK



MAIN DECK

*Call or visit expeditions.com/GalaShips for 2016 pricing, starting at \$6,990 per person, double occupancy.

Prices are per person, double occupancy unless indicated as solo.

ITINERARY	CAT. 1	CAT. 2	CAT. 3	CAT. 4	CAT. 5	CAT. 1 SOLO	CAT. 2 SOLO	ADVANCE PAYMENT	NOTE
2017 GALÁPAGOS: ABOARD NATIONAL GEOGRAPHIC ISLANDER—PAGE 16									
Dec. 31, 2016 - Dec. 16, 2017	\$7,330	\$8,290	\$9,170	\$9,750	\$11,860	\$10,990	\$12,440	\$750	International and internal Ecuador tickets must be issued separately for all Galápagos voyages. Sample International Airfares: round-trip Miami/Guayaquil: Economy from \$500; Business from \$800. Sample Internal Airfares: Guayaquil/Galápagos: Adults from \$520; Children (under 12) from \$260. Call for sample Peru airfare.
Holiday: Dec. 23, 30	\$8,390	\$9,440	\$10,270	\$10,900	\$13,070	\$12,590	\$14,160	\$1,000	
2017 GALÁPAGOS + MACHU PICCHU & THE LAND OF THE INCA—PAGE 18									
Jan. 14 - Dec. 2	\$13,020	\$13,980	\$14,860	\$15,440	\$17,550	\$18,060	\$19,510	\$1,500	
Dec. 9	\$13,750	\$14,710	\$15,590	\$16,170	\$18,280	\$18,790	\$20,240	\$1,500	
Holiday: Dec. 23	\$14,810	\$15,860	\$16,690	\$17,320	\$19,490	\$20,390	\$21,960	\$1,500	

Please call for Galápagos + Upper Amazon pricing, including the 10% back-to-back savings and free airfare offer.

TAKE ADVANTAGE OF OUR SPECIAL OFFERS

BOOK BY DEC. 31, 2016 to take advantage of the Galápagos Free Air & Business Class Upgrade Offers on select departures. On voyages with complimentary air offers, airfare is based on round-trip economy group flights that must be ticketed by Lindblad Expeditions. All offers are valid for new bookings only, subject to availability at the time of booking, and may not be combined with other offers and pre- and post-extensions. In the case that Lindblad's group or charter flights are no longer available at time of booking, we reserve the right to issue a credit certificate. Call for details about business class upgrades.

15% SOLO TRAVELER SAVINGS: Save 15% off standard solo rates on select departures. Applies to all departures aboard *National Geographic Endeavour* through Nov. 18, 2016. Solo cabin availability is limited. Call for pricing and details.

BACK-TO-BACK SAVINGS: Save 10% on any consecutive journeys taken aboard one of our expedition ships. These savings are applicable on voyage fares only, and are not valid on extensions or airfare.

TRAVEL AS A GROUP: Save 5% when traveling as a group of 8 or more people. Take advantage

of these great savings, while enjoying traveling with friends and family. This saving is applicable to voyage fares only, and is not valid on extensions or airfare. Deposit, final payments, and cancellation policies for group travel vary from our regular policies.

BRING THE KIDS: We believe sharing an expedition with your kids or grandkids is a life-enhancing experience. Take \$1,500 off the double occupancy rate for each child under 18 when you travel aboard *National Geographic Endeavour* through Nov. 18, 2016. Take \$500 off per child under 18 on other departures aboard both ships, year-round.

COMBINE OFFERS: Certain offers may be combinable, up to two savings opportunities except where noted otherwise. For example, travel with a group of 8 or more on back-to-back expeditions, and take advantage of both savings!



YOU'RE INVITED TO EXPLORE EXPEDITIONS.COM

Everything that's a joy to do (exploring, daydreaming) and everything that's necessary to do (planning, booking) is easy—whether you're on a desktop computer or a tablet. Here's why:

- ✓ **It's easy** to find Destinations, Itineraries, Dates & Rates
- ✓ **Research is rewarding thanks to in-depth content;** our Daily Expedition Reports (DERs) give you an unvarnished look at what goes on during our expeditions—find them on our homepage & archives
- ✓ **Stunning visuals**—the site is a showcase for our expedition photographers' amazing videos & photos
- ✓ **View, request or download brochures** quickly & easily
- ✓ **Sign up for upcoming webinars,** they're a simple, easy way to learn a lot about a geography
- ✓ **We invite you to visit expeditions.com now.** And while you're there, be sure to sign up for our email—to get videos, photos, exclusives & offers.

BE PART OF OUR EXPEDITION COMMUNITY

Join in! Here's how:

- ✓ Check out Expedition Snapshots from guests—and upload your own on the expeditions.com homepage
- ✓ Check our daily blog for interesting posts, video clips and Photos of the Week: expeditions.com/blog
- ✓ Like us on Facebook: hear what our travelers have to say, get inspired and chime in: facebook.com/LindbladExpeditions
- ✓ Preview an expedition before you go or subscribe to our videos on youtube.com/lindbladexpeditions
- ✓ Follow us [@LindbladExp](https://twitter.com/LindbladExp) and our founder, Sven Lindblad [@SvenLEX](https://twitter.com/SvenLEX), on Twitter; and on Instagram [@SOLindblad](https://www.instagram.com/SOLindblad) for his interesting view of the world.



RESERVATION INFORMATION

Cost Includes: All accommodations aboard ships or in hotels per itinerary or similar, all meals and nonalcoholic beverages aboard ship, meals on land as indicated, air transportation where indicated as included, shore excursions, sightseeing and entrance fees, special access permits, transfers to and from group flights, use of snorkeling equipment and wet suits, use of kayaks and stand-up paddleboards, tips (except to ship's crew), taxes and service charges, services of a ship physician and services of our expedition staff.

Combined Itineraries Costs Include: Hotel nights as described; sightseeing; portage; services of local guides and tour leaders.

Not Included: Air transportation (except where shown as included), extensions, passport, visa, immigration fees, meals not indicated, travel protection plan, items of personal nature, such as alcoholic beverages, e-mail, voyage DVD, laundry. Gratuities to ship's crew are at your discretion.

Airfare: For all programs, airfare is an additional cost unless otherwise noted. We will gladly assist in making your air arrangements for a \$50 per person service fee.

TERMS & CONDITIONS

Reservations: To reserve your place, an advance payment is required at the time of reservation. The advance payment amount varies by program. Payment is accepted by Visa, MasterCard, American Express, Discover or by check. Receipt of your initial payment indicates your acceptance of our complete Terms and Conditions. We require written notice at the time of reservation for any physical condition, diet, or treatment requiring special attention. Once your reservation is confirmed, we urge you to use your personalized online account for important information to help you prepare for your voyage. Managing your documents online will facilitate fast and accurate communication, and allow you to provide us with pertinent details we require, in order to complete your reservation. Your online account gives you access to your Expedition Guide, which includes valuable information specific to your voyage. You can also use your online account to make easy payments, view recommended flights and reading material, packing list, and so much more.

Final Payment: Due no later than 90 days prior to departures.

Travel Protection Plan: We strongly recommend that you take advantage of our Travel Protection Plan. This plan offers comprehensive coverage to protect you from cancellation fees, costs incurred due to trip delays/interruption, damaged or lost baggage, medical assistance and evacuation during your travels. Our Travel Protection Plan is available for U.S. and Canadian residents only, and may be purchased any time prior to final payment due date. Travel Protection premiums are non-refundable once plan is purchased.

Smoking Policy: Allowed only in designated outdoor areas.

Responsibility and Other Terms & Conditions: Among other things, limitations of Lindblad Expeditions' and the National Geographic Society's liability for loss of property, injury, illness or death during the voyage will be provided to all guests on the ship's ticket sent prior to departure, and are also available on our website at www.expeditions.com/terms, or upon request. By registering for a trip, the guest agrees to all such terms and conditions.

Entry and Visa Requirements:

All guests are advised to verify travel documents (passport/transit visa/entry visa) for the country through which they are transiting and/or entering. Reliable and most current information regarding international travel can be found by contacting the consulate/embassy of the country(s) you are visiting or transiting through. We will not be responsible if you are denied entry or transit into a Country, if you are unable to provide valid documents as per the Country's requirement.

©2016 Lindblad Expeditions

Lindblad Expeditions and the Eye are the trademarks of Lindblad Expeditions. All rights reserved. NATIONAL GEOGRAPHIC and the Yellow Border are the trademarks of the National Geographic Society. All rights reserved.

Photo Credits: Alamy, Agefotostock, Jonathan Aguas, Stewart Cohen, Jennifer Davidson, Ralph Lee Hopkins, Sven-Olof Lindblad, Pato Maldonado, Richard Maack, Michael S. Nolan, Jacob Riglin, Tom Ritchie, Krista Rossow, Kevin Schafer.

CANCELLATION POLICY

Number of Days Prior to Expedition Start	Per Person Cancellation Fee
120 or more days	\$350*
119–90 days	Advance payment cost
89–60 days	25% of trip cost
59–45 days	50% of trip cost
44–0 days	100% - No refund

**\$350 will be refunded in LEX Travel Certificate. This cancellation policy applies to expeditions, extensions, as well as all other additional services. The effective date of a cancellation will be the date on which your notice is received. Note: Airline cancellation policies vary by carrier, as well as the type of fare used to issue your ticket. Any revisions you make within the cancellation penalty period, such as departure date or choice of voyage, are subject to cancellation fees. Additional Terms and Conditions may apply. For complete terms, please visit our website at www.expeditions.com/terms.*

We are proud to be a Founding Member of Adventure Collection  — a family of the world's most trusted and experienced active travel companies. Each member company of Adventure Collection is dedicated to enriching the lives of its guests and to giving back to the areas in which it travels. For more information visit www.AdventureCollection.com.

Lindblad Expeditions, as an Active Member of the United States Tour Operators Association ("USTOA"), is required to post \$1 Million with USTOA to be used to reimburse, in accordance with the terms and conditions of the USTOA Travelers Assistance Program, the advance payments of Lindblad Expeditions customers in the unlikely event of Lindblad Expeditions bankruptcy, insolvency or cessation of business. Complete details of the USTOA Travelers Assistance Program may be obtained by writing to USTOA at 275 Madison Avenue, Suite 2014, NY, NY 10016, or by e-mail to information@ustoa.com or by visiting their website at www.USTOA.com.

For Reservations: Contact your travel advisor or Lindblad Expeditions

**1.800.EXPEDITION
(1.800.397.3348)**

Reservation Hours:

Mon. - Fri. 9am-8pm ET,

Sat. & Sun. 10am-5pm ET

Lindblad Expeditions, Inc.,

96 Morton Street, New York, NY 10014

Phone: 212.261.9000

Email: explore@expeditions.com

For additional information and online reservations, visit us on the Web:

www.expeditions.com.



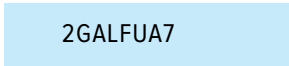
96 Morton Street
New York, NY 10014

PRSR STD
U.S. POSTAGE
PAID
LINDBLAD
EXPEDITIONS

Account Number:



Expedition Code:



1.800.EXPEDITION | WWW.EXPEDITIONS.COM

♻️ Printed on 10% recycled content paper with soy-based inks. We recommend that you pass this along for others to enjoy or recycle.

GAL-106

CELEBRATE NATIONAL GEOGRAPHIC ENDEAVOUR II 2017 INAUGURAL—FREE AIR

SELECTED HONORS & AWARDS

- » Condé Nast Traveler’s Readers’ Choice Award—Top Small Ship Cruise Lines, 2015, 2014
 - » Porthole Cruise Magazine Readers’ Choice Awards: Best Expedition Cruise Line, 2015
 - » The Tourism Cares Travel Philanthropy Awards: Legacy in Travel Philanthropy, 2015
 - » World Travel Awards: World’s Leading Green Cruise Line, 2015
 - » Condé Nast Traveler’s 2014 Readers’ Poll—Top 20 Small Cruise Ships in the World, 2014
 - » Condé Nast Traveler World Savers “Doing it All” Award, 2013
 - » Condé Nast Traveler Readers’ Choice Award—Top 25 Cruise Lines, 2013
 - » Condé Nast Traveler “Gold List”, 2013, 2009, 2008, 2007, 2006, 2005
 - » Virtuoso “Sustainable Tourism Leadership-Supplier” Award, 2013
 - » Travel + Leisure “World’s Best” Award for Small-Ship Cruise Lines, 2013, 2012, 2011, 2010, 2009, 2008
 - » Travel + Leisure “World’s Best for Families” Award for Small-Ship Cruise Lines, 2012, 2011, 2010, 2009
 - » Cruise Critic Editor’s Pick Awards “Best for Adventure,” 2013, 2012, 2011, 2010
 - » Climate Champion Award to Sven Lindblad by Clean Air-Cool Planet, 2009
 - » Tourism for Tomorrow “Global Tourism Business Award,” 2007
- ▶ GO TO WWW.EXPEDITIONS.COM/AWARDS FOR AN EXTENDED LIST

